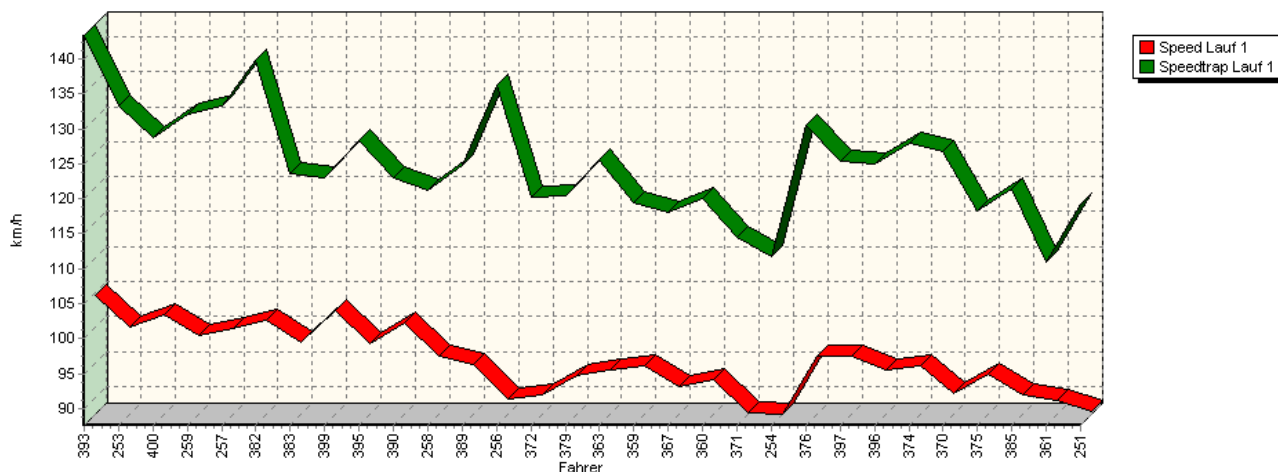
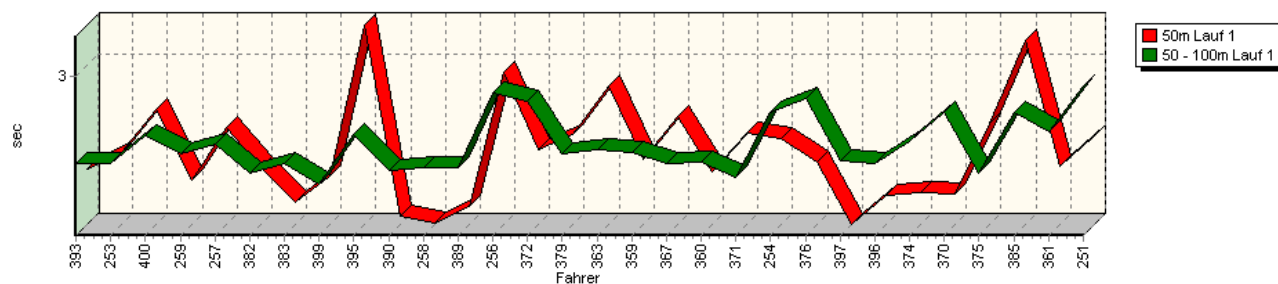


Sektorzeiten & Speeds - Gruppe H (DMSB,OSK) über 1600 bis 2000 ccm - Klasse 25

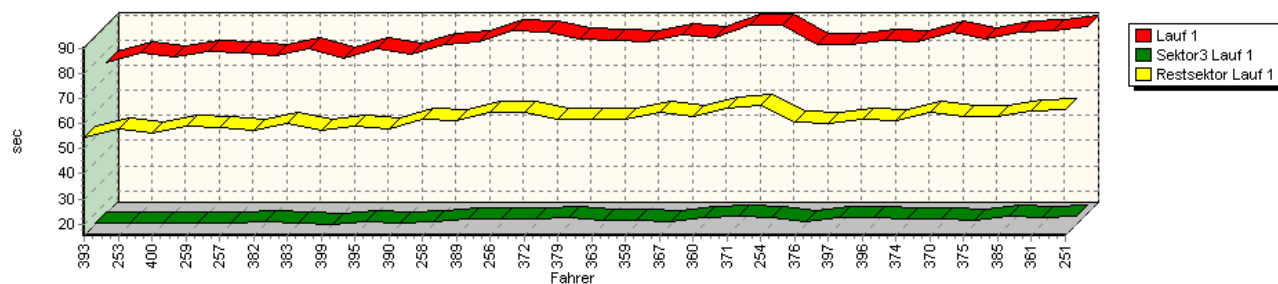
Speed-Diagramm Lauf 1



Sektor-Diagramm (Start) Lauf 1

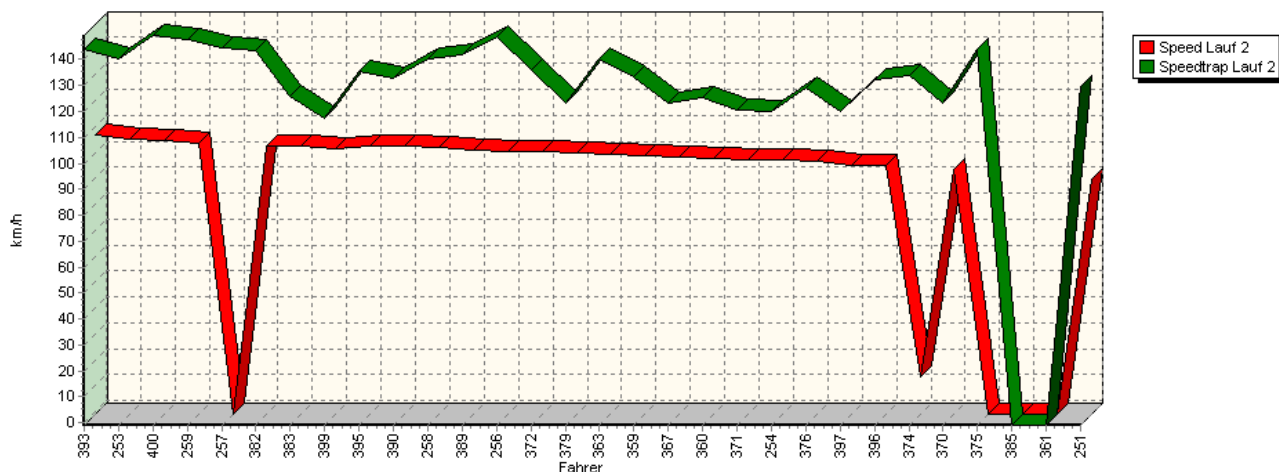


Sektor-Diagramm (Rest) Lauf 1

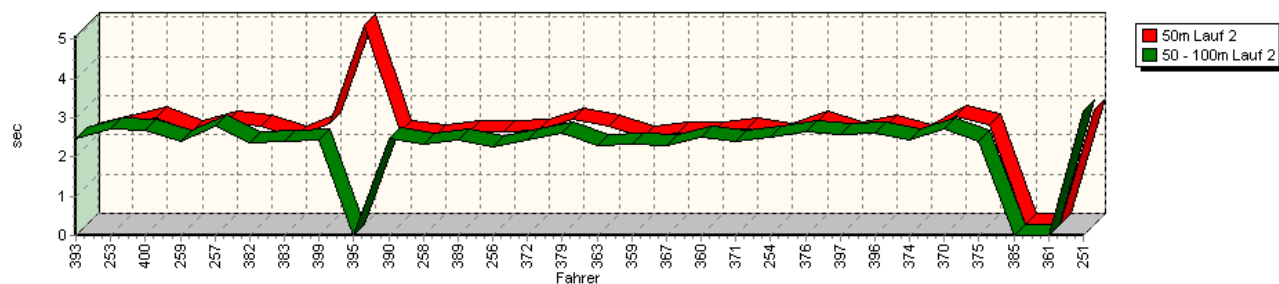


Sektorzeiten & Speeds - Gruppe H (DMSB,OSK) über 1600 bis 2000 ccm - Klasse 25

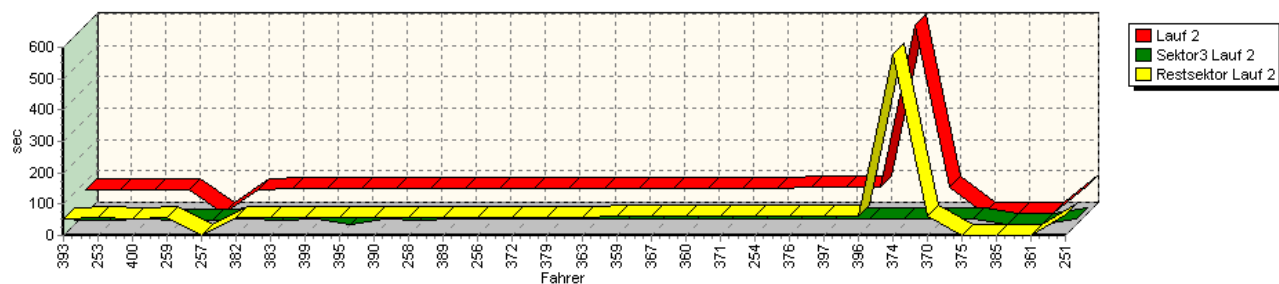
Speed-Diagramm Lauf 2



Sektor-Diagramm (Start) Lauf 2

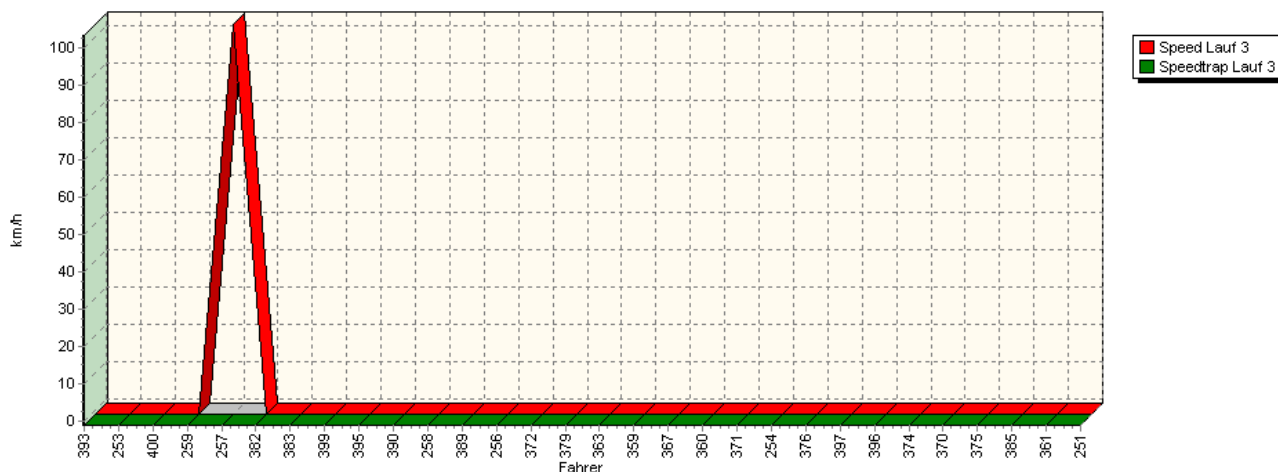


Sektor-Diagramm (Rest) Lauf 2

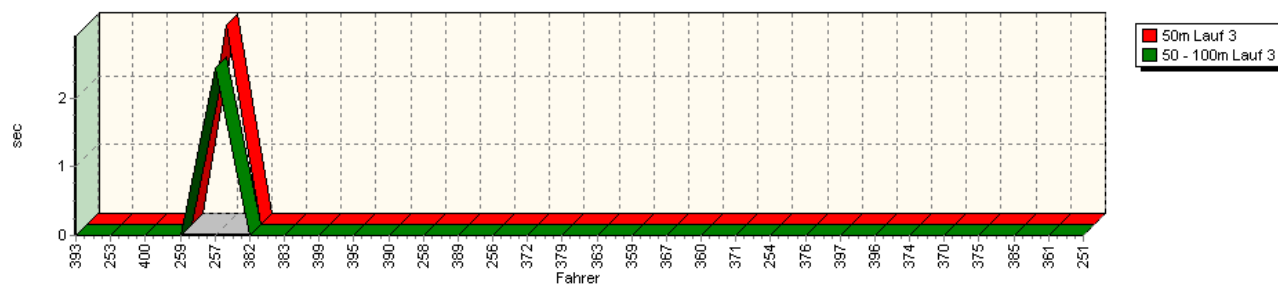


Sektorzeiten & Speeds - Gruppe H (DMSB,OSK) über 1600 bis 2000 ccm - Klasse 25

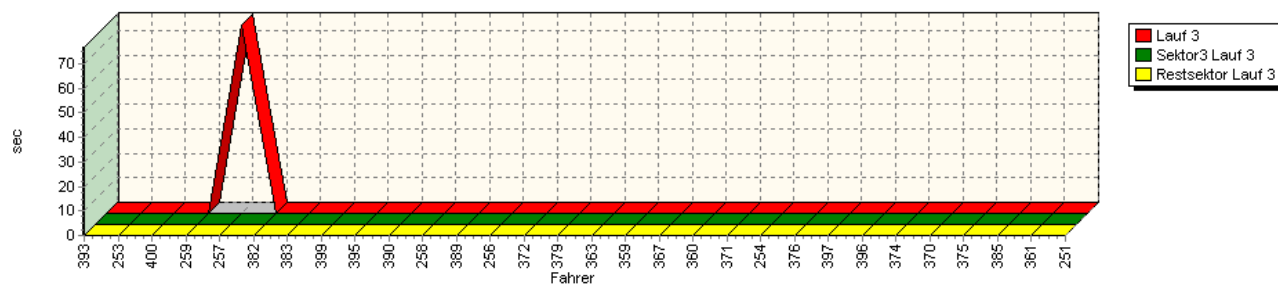
Speed-Diagramm Lauf 3



Sektor-Diagramm (Start) Lauf 3



Sektor-Diagramm (Rest) Lauf 3



Rg.	Nr.	Sektor 1 (15m)	Sektor 2 (15-50m)	Sektor 3	Speed Trap	Sektor 4	Laufzeit	Speed (Lauf)	
1	393	FLATZ Kurt		Opel Vectra STW					
		Lauf 1:	00:02.431	00:02.524	00:15.954	143,34 km/h	00:54.804	01:15.715	104,60 km/h
		Lauf 2:	00:02.279	00:02.474	00:15.200	143,93 km/h	00:54.164	01:14.119	106,86 km/h
		Lauf 3:	*	*	*	* km/h	*	*	* km/h

Sektorzeiten & Speeds - Gruppe H (DMSB,OSK) über 1600 bis 2000 ccm - Klasse 25

Rg.	Nr.		Sektor 1 (15m)	Sektor 2 (15-50m)	Sektor 3	Speed Trap	Sektor 4	Laufzeit	Speed (Lauf)
2	253	FAATH Sascha		Opel Kadett C Coupé					
		Lauf 1:	00:02.525	00:02.523	00:16.111	133,20 km/h	00:57.956	01:19.117	100,11 km/h
		Lauf 2:	00:02.499	00:02.706	00:14.896	140,36 km/h	00:55.239	01:15.342	105,12 km/h
		Lauf 3:	*	*	*	* km/h	*	*	* km/h
3	400	HOVEMANN Holger		Opel Risse Kadett 16V					
		Lauf 1:	00:02.762	00:02.678	00:16.186	128,78 km/h	00:56.152	01:17.780	101,83 km/h
		Lauf 2:	00:02.717	00:02.680	00:15.574	149,31 km/h	00:54.636	01:15.609	104,75 km/h
		Lauf 3:	*	*	*	* km/h	*	*	* km/h
4	259	ELLER Hans-Peter		Opel Kadett C Coupé					
		Lauf 1:	00:02.373	00:02.577	00:16.053	132,02 km/h	00:59.148	01:20.154	98,81 km/h
		Lauf 2:	00:02.378	00:02.379	00:15.351	147,57 km/h	00:56.308	01:16.418	103,64 km/h
		Lauf 3:	*	*	*	* km/h	*	*	* km/h
5	257	BANZ Urs		Opel Ascona B 8V					
		Lauf 1:	00:02.660	00:02.634	00:15.742	133,35 km/h	00:58.228	01:19.265	99,92 km/h
		Lauf 2:	00:02.623	00:02.769	00:15.335	144,77 km/h	*	A	* km/h
		Lauf 3:	00:02.898	00:02.442	*	* km/h	*	01:16.691	103,27 km/h
6	382	PETER Guido		VW Golf I 17 8V					
		Lauf 1:	00:02.441	00:02.472	00:16.310	139,78 km/h	00:57.169	01:18.394	101,03 km/h
		Lauf 2:	00:02.493	00:02.376	00:15.616	143,51 km/h	00:56.692	01:17.179	102,62 km/h
		Lauf 3:	*	*	*	* km/h	*	*	* km/h
7	383	EHRLE Bernd		Opel Kadett C 8V					
		Lauf 1:	00:02.252	00:02.528	00:15.992	123,53 km/h	01:00.156	01:20.931	97,86 km/h
		Lauf 2:	00:02.215	00:02.380	00:15.332	125,61 km/h	00:57.325	01:17.253	102,52 km/h
		Lauf 3:	*	*	*	* km/h	*	*	* km/h
8	399	WIEBE Björn		Renault Clio Williams 16V BWR					
		Lauf 1:	00:02.395	00:02.410	00:15.404	123,01 km/h	00:57.064	01:17.275	102,49 km/h
		Lauf 2:	00:02.573	00:02.418	00:15.911	117,53 km/h	00:57.423	01:18.326	101,11 km/h
		Lauf 3:	*	*	*	* km/h	*	*	* km/h
9	395	MINICHBERGER Mario		VW Scirocco 1600					
		Lauf 1:	00:03.222	00:02.686	00:16.311	128,38 km/h	00:58.772	01:20.993	97,79 km/h
		Lauf 2:	00:05.075	*	*	135,28 km/h	00:56.217	01:17.429	102,29 km/h
		Lauf 3:	*	*	*	* km/h	*	*	* km/h
10	390	FLIK Thomas		Renault Clio 16S Williams					
		Lauf 1:	00:02.179	00:02.486	00:15.957	123,09 km/h	00:58.093	01:18.717	100,61 km/h
		Lauf 2:	00:02.376	00:02.477	00:15.695	132,69 km/h	00:56.928	01:17.477	102,22 km/h
		Lauf 3:	*	*	*	* km/h	*	*	* km/h
11	258	FAULHABER Stefan		Opel Risse Kadett C					
		Lauf 1:	00:02.137	00:02.499	00:16.345	121,24 km/h	01:01.627	01:22.609	95,87 km/h
		Lauf 2:	00:02.269	00:02.343	00:15.122	140,34 km/h	00:57.982	01:17.719	101,91 km/h
		Lauf 3:	*	*	*	* km/h	*	*	* km/h
12	389	WEBER Jens		Opel Kadett C 16V					
		Lauf 1:	00:02.226	00:02.501	00:17.513	124,72 km/h	01:01.381	01:23.623	94,71 km/h
		Lauf 2:	00:02.344	00:02.446	00:16.245	141,77 km/h	00:57.662	01:18.699	100,64 km/h
		Lauf 3:	*	*	*	* km/h	*	*	* km/h
13	256	WENZEL Uwe		Opel Kadett C Coupé					
		Lauf 1:	00:02.966	00:02.910	00:17.799	136,20 km/h	01:04.564	01:28.242	89,75 km/h
		Lauf 2:	00:02.357	00:02.255	00:15.927	148,96 km/h	00:58.276	01:18.818	100,49 km/h
		Lauf 3:	*	*	*	* km/h	*	*	* km/h

Sektorzeiten & Speeds - Gruppe H (DMSB,OSK) über 1600 bis 2000 ccm - Klasse 25

Rg.	Nr.		Sektor 1 (15m)	Sektor 2 (15-50m)	Sektor 3	Speed Trap	Sektor 4	Laufzeit	Speed (Lauf)
14	372	DANDL Michael		BMW E30 320 iS					
		Lauf 1:	00:02.540	00:02.865	00:17.878	120,19 km/h	01:04.397	01:27.681	90,33 km/h
		Lauf 2:	00:02.404	00:02.449	00:15.563	136,06 km/h	00:58.655	01:19.073	100,16 km/h
		Lauf 3:	*	*	*	* km/h	*	*	* km/h
15	379	PETTER Richard		BMW 2002 16V					
		Lauf 1:	00:02.625	00:02.580	00:17.900	120,44 km/h	01:01.956	01:25.062	93,11 km/h
		Lauf 2:	00:02.676	00:02.622	00:16.412	123,09 km/h	00:57.574	01:19.286	99,89 km/h
		Lauf 3:	*	*	*	* km/h	*	*	* km/h
16	363	PAGANO Sebastiano		Opel Kadett C 8V					
		Lauf 1:	00:02.889	00:02.601	00:17.112	125,52 km/h	01:01.718	01:24.322	93,93 km/h
		Lauf 2:	00:02.512	00:02.303	00:15.970	140,18 km/h	00:59.051	01:19.839	99,20 km/h
		Lauf 3:	*	*	*	* km/h	*	*	* km/h
17	359	FRIESINGER Christian		Renault Clio					
		Lauf 1:	00:02.486	00:02.584	00:16.894	119,52 km/h	01:01.872	01:23.838	94,47 km/h
		Lauf 2:	00:02.220	00:02.339	00:15.798	133,28 km/h	00:59.907	01:20.266	98,67 km/h
		Lauf 3:	*	*	*	* km/h	*	*	* km/h
18	367	WIEBE André		Renault Megane Cup APWR					
		Lauf 1:	00:02.723	00:02.526	00:16.637	118,15 km/h	01:04.539	01:26.427	91,64 km/h
		Lauf 2:	00:02.321	00:02.306	00:15.484	123,45 km/h	01:00.405	01:20.519	98,36 km/h
		Lauf 3:	*	*	*	* km/h	*	*	* km/h
19	360	LANG Bernhard		Ford Escort RS2000 MKII					
		Lauf 1:	00:02.416	00:02.535	00:18.035	119,99 km/h	01:02.634	01:25.621	92,50 km/h
		Lauf 2:	00:02.314	00:02.515	00:16.204	125,57 km/h	00:59.925	01:20.960	97,83 km/h
		Lauf 3:	*	*	*	* km/h	*	*	* km/h
20	371	BEHR Martin		BMW 2002					
		Lauf 1:	00:02.629	00:02.451	00:18.944	114,59 km/h	01:06.091	01:30.117	87,89 km/h
		Lauf 2:	00:02.440	00:02.394	00:16.498	120,75 km/h	01:00.200	01:21.536	97,14 km/h
		Lauf 3:	*	*	*	* km/h	*	*	* km/h
21	254	SCHILL Sven		Opel Kadett C					
		Lauf 1:	00:02.602	00:02.804	00:17.894	111,65 km/h	01:07.078	01:30.380	87,63 km/h
		Lauf 2:	00:02.304	00:02.504	00:16.817	119,81 km/h	00:59.960	01:21.587	97,07 km/h
		Lauf 3:	*	*	*	* km/h	*	*	* km/h
22	376	RYPKA René		Opel Kadett C GT/E 8V					
		Lauf 1:	00:02.472	00:02.881	00:16.772	130,51 km/h	01:00.418	01:22.545	95,95 km/h
		Lauf 2:	00:02.624	00:02.654	00:16.935	129,12 km/h	00:59.790	01:22.005	96,58 km/h
		Lauf 3:	*	*	*	* km/h	*	*	* km/h
23	397	PREISSER Dirk		Opel Kadett - Frank 16V					
		Lauf 1:	00:02.130	00:02.538	00:17.891	125,35 km/h	01:00.032	01:22.594	95,89 km/h
		Lauf 2:	00:02.325	00:02.564	00:17.969	119,86 km/h	01:00.636	01:23.497	94,85 km/h
		Lauf 3:	*	*	*	* km/h	*	*	* km/h
24	396	GÖSER Günter		Opel Kadett C Coupe 16V					
		Lauf 1:	00:02.292	00:02.528	00:17.933	124,96 km/h	01:01.586	01:24.342	93,90 km/h
		Lauf 2:	00:02.500	00:02.594	00:16.826	131,99 km/h	01:01.366	01:23.288	95,09 km/h
		Lauf 3:	*	*	*	* km/h	*	*	* km/h
25	374	HATEZIC Johann		Opel Ascona B 8V					
		Lauf 1:	00:02.306	00:02.644	00:17.843	127,90 km/h	01:00.940	01:23.735	94,58 km/h
		Lauf 2:	00:02.262	00:02.436	00:16.518	134,05 km/h	09:38.782	10:00.000	13,20 km/h
		Lauf 3:	*	*	*	* km/h	*	*	* km/h

Sektorzeiten & Speeds - Gruppe H (DMSB,OSK) über 1600 bis 2000 ccm - Klasse 25

Rg.	Nr.		Sektor 1 (15m)	Sektor 2 (15-50m)	Sektor 3	Speed Trap	Sektor 4	Laufzeit	Speed (Lauf)
26	370	EHRET Christian		Opel Ascona B					
		Lauf 1:	00:02.296	00:02.806	00:17.698	126,75 km/h	01:04.652	01:27.454	90,56 km/h
		Lauf 2:	00:02.732	00:02.730	00:17.050	123,37 km/h	01:02.281	01:24.794	93,40 km/h
		Lauf 3:	*	*	*	* km/h	*	*	* km/h
27	375	GÜRTZGEN Friedhelm		BWM 2002 tii					
		Lauf 1:	00:02.681	00:02.469	00:17.039	118,23 km/h	01:02.696	01:24.886	93,30 km/h
		Lauf 2:	00:02.550	00:02.395	00:15.950	143,87 km/h	*	A	* km/h
		Lauf 3:	*	*	*	* km/h	*	*	* km/h
28	385	ROTTENBERGER Dieter		BMW 318 iS E 36-Stw					
		Lauf 1:	00:03.137	00:02.808	00:18.812	121,39 km/h	01:02.856	01:27.614	90,40 km/h
		Lauf 2:	*	*	*	* km/h	*	*	* km/h
		Lauf 3:	*	*	*	* km/h	*	*	* km/h
29	361	HAMETNER Walter		VW Golf I					
		Lauf 1:	00:02.447	00:02.698	00:18.010	111,04 km/h	01:05.221	01:28.378	89,62 km/h
		Lauf 2:	*	*	*	* km/h	*	*	* km/h
		Lauf 3:	*	*	*	* km/h	*	*	* km/h
30	251	BUSER Lis		Opel Kadett C					
		Lauf 1:	00:02.618	00:02.949	00:18.958	119,28 km/h	01:05.547	01:30.075	87,93 km/h
		Lauf 2:	00:02.924	00:03.178	00:16.996	129,44 km/h	01:05.432	01:28.531	89,46 km/h
		Lauf 3:	*	*	*	* km/h	*	*	* km/h