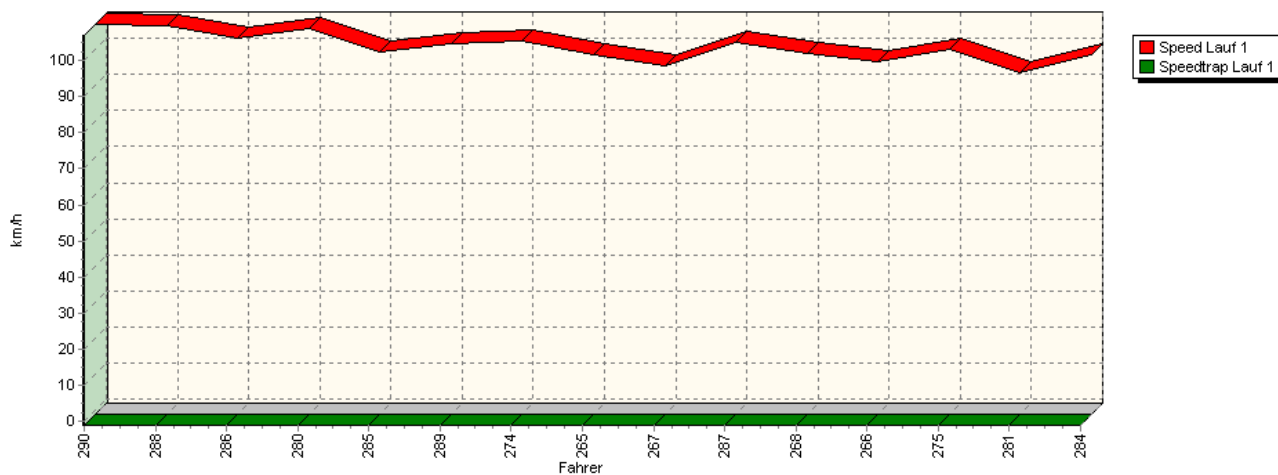
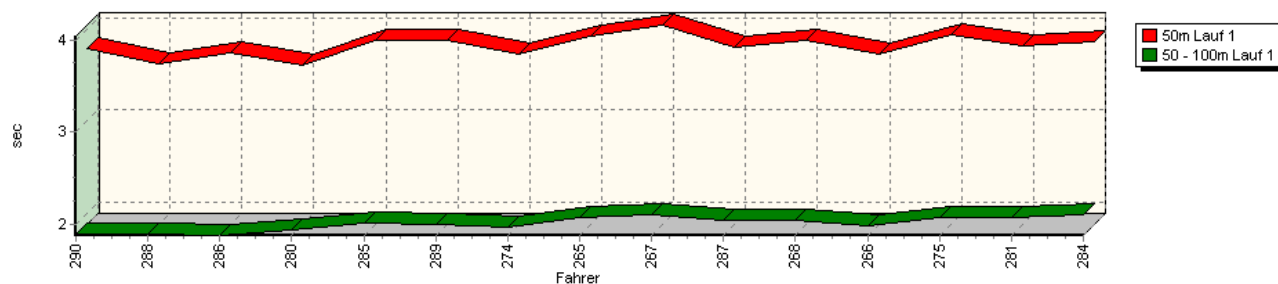


Sektorzeiten & Speeds - Training - Gruppe H bis 1300 ccm - Klasse 30

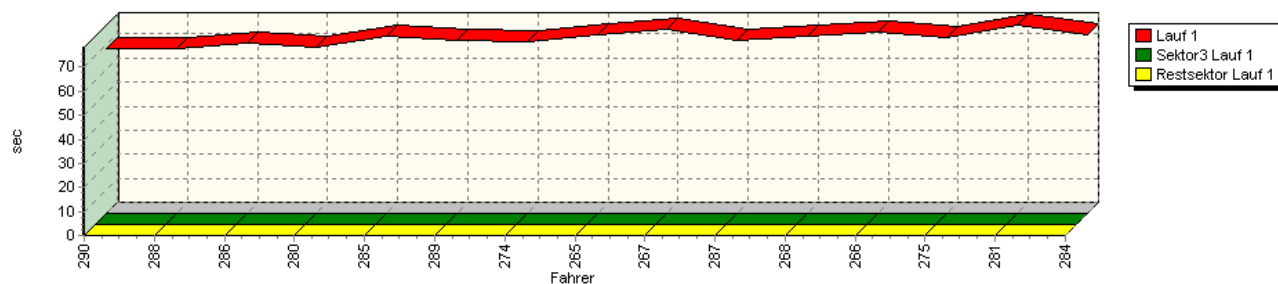
Speed-Diagramm Lauf 1



Sektor-Diagramm (Start) Lauf 1

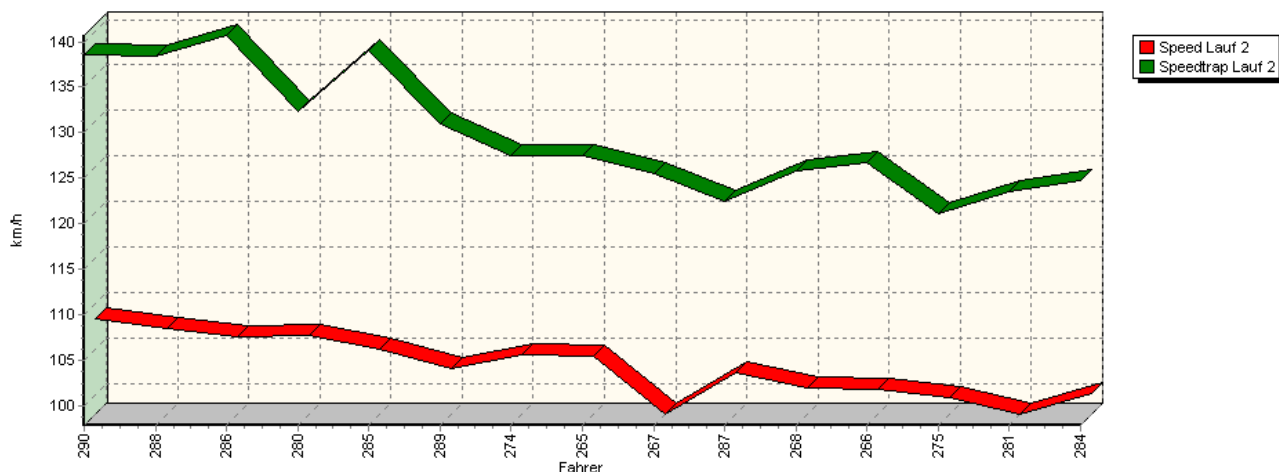


Sektor-Diagramm (Rest) Lauf 1

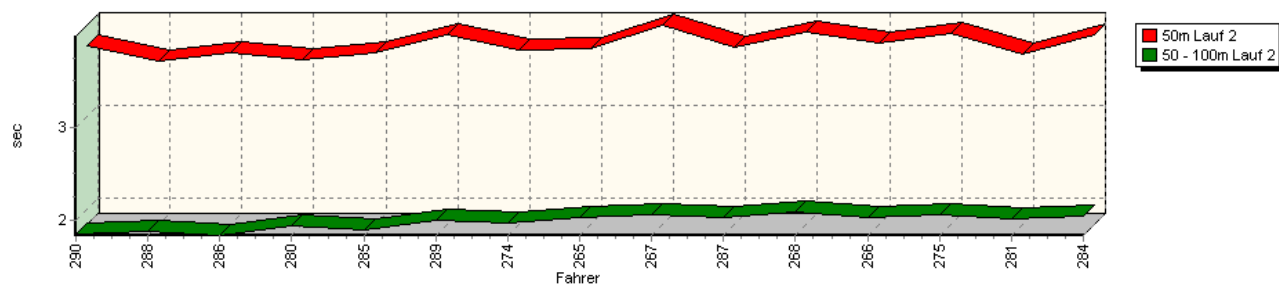


Sektorzeiten & Speeds - Training - Gruppe H bis 1300 ccm - Klasse 30

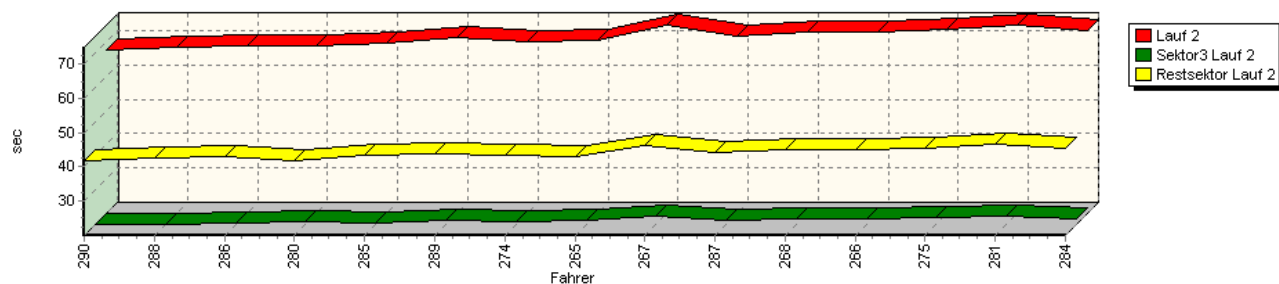
Speed-Diagramm Lauf 2



Sektor-Diagramm (Start) Lauf 2

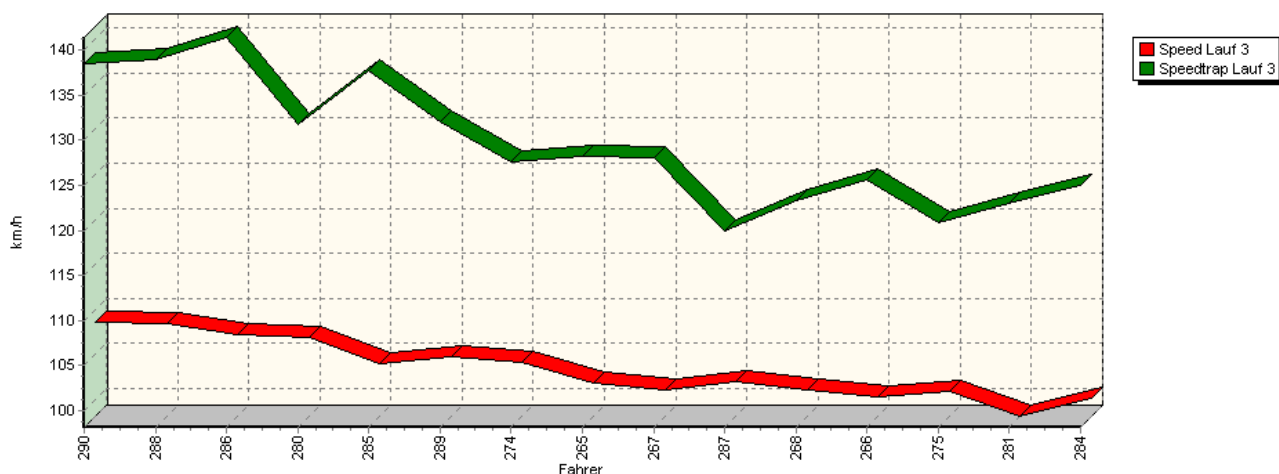


Sektor-Diagramm (Rest) Lauf 2

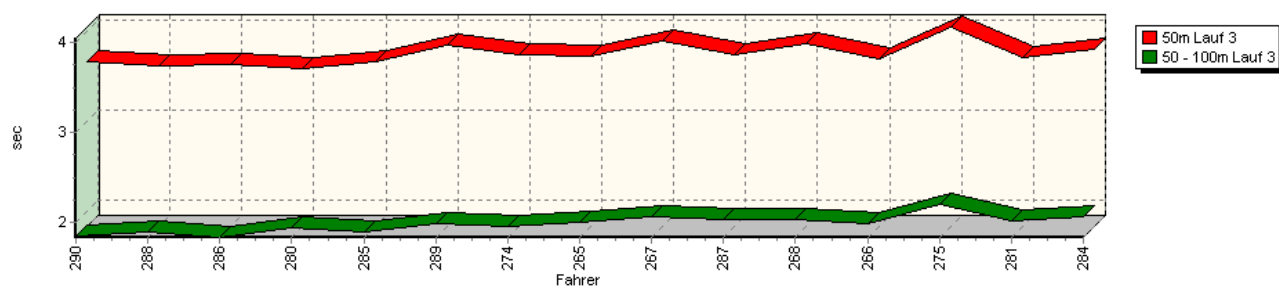


Sektorzeiten & Speeds - Training - Gruppe H bis 1300 ccm - Klasse 30

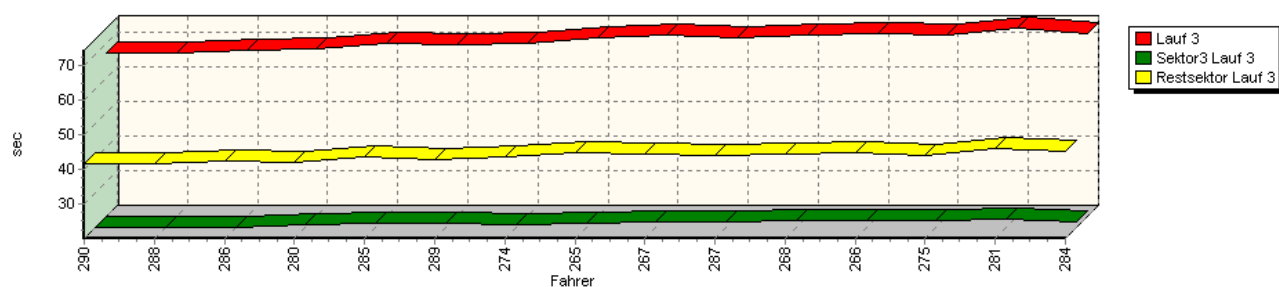
Speed-Diagramm Lauf 3



Sektor-Diagramm (Start) Lauf 3

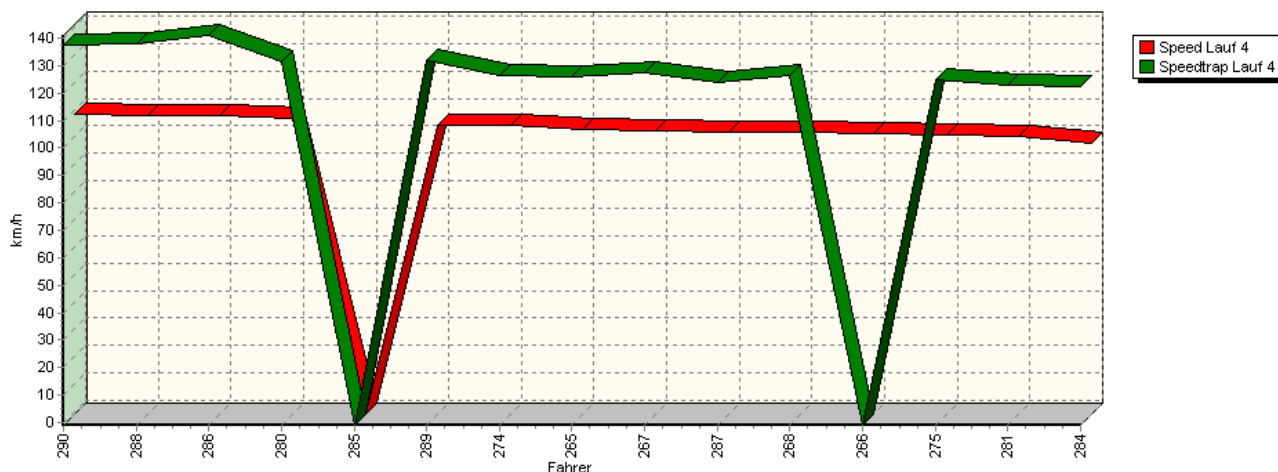


Sektor-Diagramm (Rest) Lauf 3

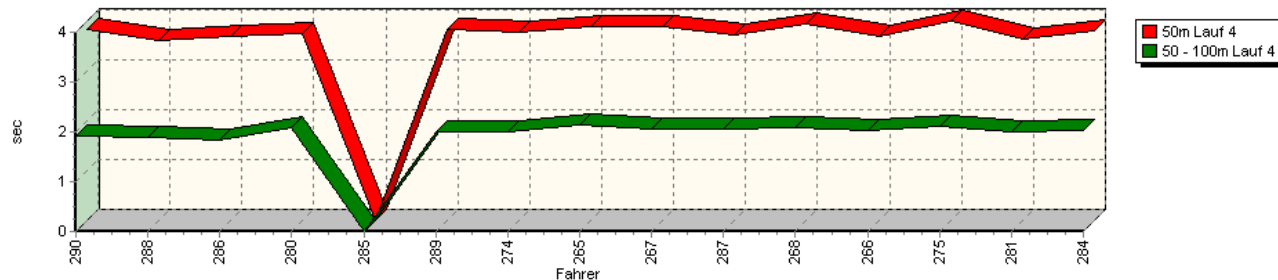


Sektorzeiten & Speeds - Training - Gruppe H bis 1300 ccm - Klasse 30

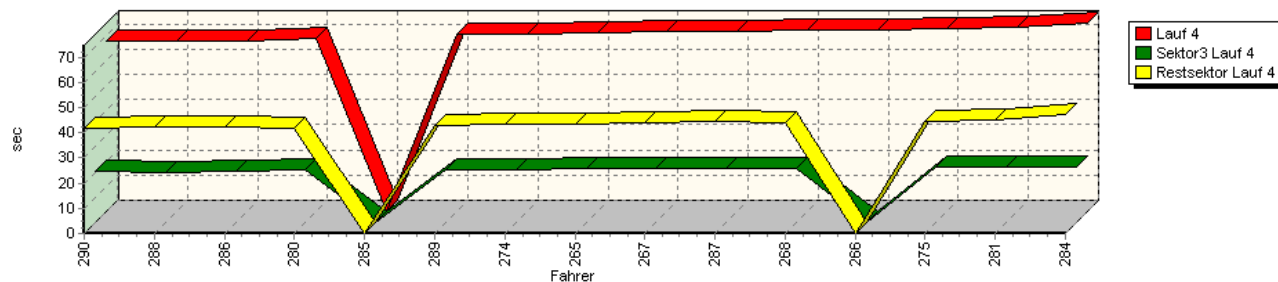
Speed-Diagramm Lauf 4



Sektor-Diagramm (Start) Lauf 4

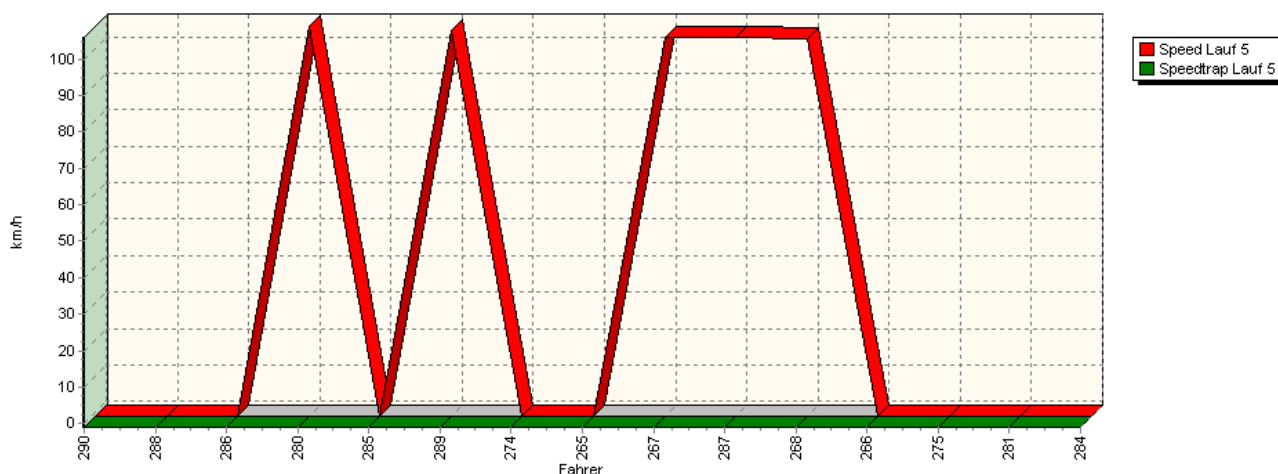


Sektor-Diagramm (Rest) Lauf 4

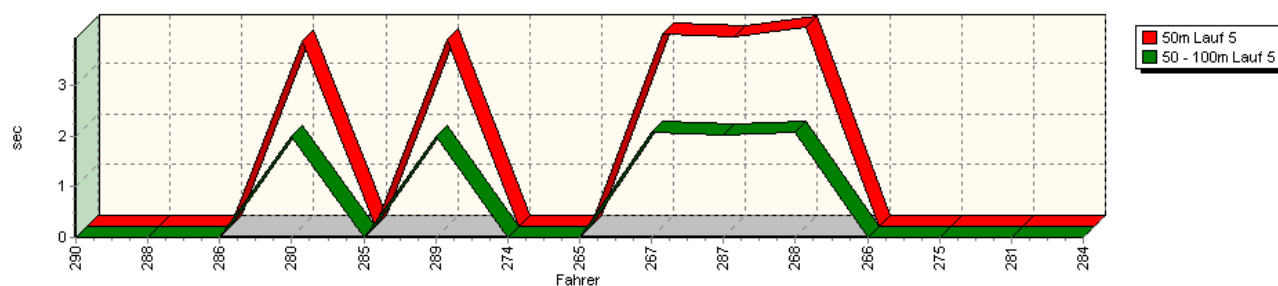


Sektorzeiten & Speeds - Training - Gruppe H bis 1300 ccm - Klasse 30

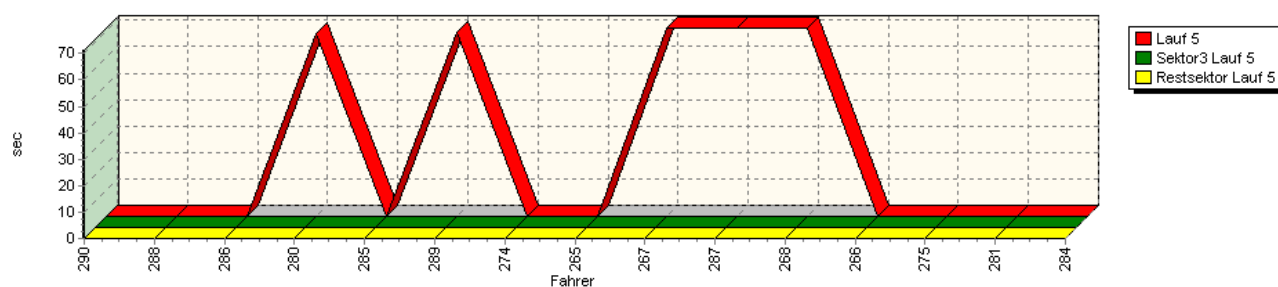
Speed-Diagramm Lauf 5



Sektor-Diagramm (Start) Lauf 5



Sektor-Diagramm (Rest) Lauf 5



Rg.	Nr.	Sektor 1 (50m)	Sektor 2 (50-100m)	Sektor 3	Speed Trap	Sektor 4	Laufzeit	Speed (Lauf)
1	290	BERNERT Klaus		VW Polo 16V				
	Lauf 1:	00:03.795	00:01.886	*	* km/h	*	01:08.369	106,89 km/h
	Lauf 2:	00:03.764	00:01.852	00:20.097	138,50 km/h	00:41.761	01:07.476	108,30 km/h
	Lauf 3:	00:03.659	00:01.844	00:20.181	138,52 km/h	00:41.633	01:07.321	108,56 km/h
	Lauf 4:	00:03.846	00:01.908	00:20.190	137,72 km/h	00:41.565	01:07.511	108,25 km/h
	Lauf 5:	*	*	*	* km/h	*	*	* km/h



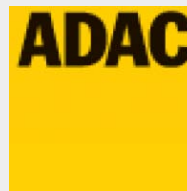
41. Osnabrücker ADAC Bergrennen

16. und 17. August 2008

Deutsche Bergmeisterschaft 2008

DMSB Bergpokal für Tourenwagen und Rennsportfahrzeuge

KW Gruppe H Berg-Cup



Sektorzeiten & Speeds - Training - Gruppe H bis 1300 ccm - Klasse 30

Rg.	Nr.		Sektor 1 (50m)	Sektor 2 (50-100m)	Sektor 3	Speed Trap	Sektor 4	Laufzeit	Speed (Lauf)
2	288	MOSER Gerhard		VW Polo					
		Lauf 1:	00:03.622	00:01.893	*	* km/h	*	01:08.607	106,52 km/h
		Lauf 2:	00:03.603	00:01.874	00:20.201	138,42 km/h	00:42.486	01:08.166	107,21 km/h
		Lauf 3:	00:03.619	00:01.889	00:20.092	138,99 km/h	00:41.801	01:07.403	108,42 km/h
		Lauf 4:	00:03.619	00:01.892	00:20.012	137,95 km/h	00:42.396	01:07.921	107,60 km/h
		Lauf 5:	*	*	*	* km/h	*	*	* km/h
3	286	KLEINER Martin		VW Polo 16V					
		Lauf 1:	00:03.751	00:01.872	*	* km/h	*	01:10.958	102,99 km/h
		Lauf 2:	00:03.690	00:01.835	00:20.354	140,69 km/h	00:42.811	01:08.692	106,39 km/h
		Lauf 3:	00:03.627	00:01.835	00:20.170	141,42 km/h	00:42.578	01:08.211	107,14 km/h
		Lauf 4:	00:03.699	00:01.839	00:20.244	141,00 km/h	00:42.133	01:07.916	107,60 km/h
		Lauf 5:	*	*	*	* km/h	*	*	* km/h
4	280	EBENHÖH Armin		VW Polo					
		Lauf 1:	00:03.612	00:01.931	*	* km/h	*	01:09.019	105,88 km/h
		Lauf 2:	00:03.618	00:01.938	00:21.042	132,39 km/h	00:41.973	01:08.573	106,57 km/h
		Lauf 3:	00:03.584	00:01.936	00:20.742	131,82 km/h	00:42.140	01:08.404	106,84 km/h
		Lauf 4:	00:03.750	00:02.088	00:20.767	131,46 km/h	00:41.931	01:08.539	106,63 km/h
		Lauf 5:	00:03.655	00:01.988	*	* km/h	*	01:09.002	105,91 km/h
5	285	STELBERG André		Schneider Polo 16V					
		Lauf 1:	00:03.883	00:02.003	*	* km/h	*	01:13.720	99,13 km/h
		Lauf 2:	00:03.687	00:01.902	00:20.521	139,00 km/h	00:43.547	01:09.659	104,91 km/h
		Lauf 3:	00:03.663	00:01.904	00:21.147	137,75 km/h	00:43.524	01:10.242	104,04 km/h
		Lauf 4:	*	*	*	* km/h	*	*	* km/h
		Lauf 5:	*	*	*	* km/h	*	*	* km/h
6	289	LETMADE Bernd		VW Polo					
		Lauf 1:	00:03.889	00:01.993	*	* km/h	*	01:11.960	101,56 km/h
		Lauf 2:	00:03.885	00:02.001	00:21.438	130,91 km/h	00:43.775	01:11.101	102,78 km/h
		Lauf 3:	00:03.842	00:01.992	00:21.129	132,08 km/h	00:42.813	01:09.778	104,73 km/h
		Lauf 4:	00:03.848	00:02.007	00:21.136	131,74 km/h	00:43.187	01:10.179	104,13 km/h
		Lauf 5:	00:03.699	00:01.992	*	* km/h	*	01:09.664	104,90 km/h
7	274	RABE Felix		VW Polo 86C					
		Lauf 1:	00:03.730	00:01.969	*	* km/h	*	01:11.368	102,40 km/h
		Lauf 2:	00:03.725	00:01.969	00:20.974	127,51 km/h	00:43.353	01:10.024	104,36 km/h
		Lauf 3:	00:03.740	00:01.954	00:20.795	127,59 km/h	00:43.703	01:10.194	104,11 km/h
		Lauf 4:	00:03.772	00:01.995	00:21.157	126,25 km/h	00:43.280	01:10.207	104,09 km/h
		Lauf 5:	*	*	*	* km/h	*	*	* km/h
8	265	KLINGELBERGER Thomas		VW Polo					
		Lauf 1:	00:03.929	00:02.076	*	* km/h	*	01:14.079	98,65 km/h
		Lauf 2:	00:03.739	00:02.024	00:21.398	127,47 km/h	00:43.000	01:10.163	104,16 km/h
		Lauf 3:	00:03.716	00:02.007	00:21.313	128,16 km/h	00:44.777	01:11.814	101,76 km/h
		Lauf 4:	00:03.890	00:02.149	00:21.466	125,88 km/h	00:43.657	01:11.164	102,69 km/h
		Lauf 5:	*	*	*	* km/h	*	*	* km/h
9	267	ROCHLITZ Benjamin		VW Polo					
		Lauf 1:	00:04.050	00:02.095	*	* km/h	*	01:16.447	95,60 km/h
		Lauf 2:	00:03.987	00:02.061	00:22.409	125,46 km/h	00:46.225	01:14.683	97,85 km/h
		Lauf 3:	00:03.898	00:02.070	00:21.787	128,01 km/h	00:44.535	01:12.292	101,09 km/h
		Lauf 4:	00:03.892	00:02.072	00:21.532	127,41 km/h	00:43.873	01:11.371	102,39 km/h
		Lauf 5:	00:03.803	00:02.070	*	* km/h	*	01:11.042	102,87 km/h



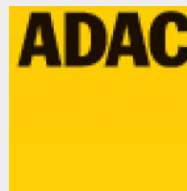
41. Osnabrücker ADAC Bergrennen

16. und 17. August 2008

Deutsche Bergmeisterschaft 2008

DMSB Bergpokal für Tourenwagen und Rennsportfahrzeuge

KW Gruppe H Berg-Cup



Sektorzeiten & Speeds - Training - Gruppe H bis 1300 ccm - Klasse 30

Rg.	Nr.		Sektor 1 (50m)	Sektor 2 (50-100m)	Sektor 3	Speed Trap	Sektor 4	Laufzeit	Speed (Lauf)
10	287	SMYREK Jörg		Audi 50					
		Lauf 1:	00:03.806	00:02.034	*	* km/h	*	01:11.733	101,88 km/h
		Lauf 2:	00:03.751	00:02.023	00:21.403	122,48 km/h	00:44.216	01:11.396	102,36 km/h
		Lauf 3:	00:03.743	00:02.030	00:21.650	119,88 km/h	00:44.233	01:11.658	101,98 km/h
		Lauf 4:	00:03.734	00:02.045	00:21.556	123,67 km/h	00:44.454	01:11.790	101,80 km/h
		Lauf 5:	00:03.738	00:02.029	*	* km/h	*	01:11.158	102,70 km/h
11	268	LOHMANN Frank		VW Polo					
		Lauf 1:	00:03.883	00:02.037	*	* km/h	*	01:13.826	98,99 km/h
		Lauf 2:	00:03.910	00:02.082	00:21.564	125,73 km/h	00:44.957	01:12.515	100,78 km/h
		Lauf 3:	00:03.853	00:02.029	00:21.928	123,31 km/h	00:44.554	01:12.367	100,99 km/h
		Lauf 4:	00:03.942	00:02.078	00:21.585	126,54 km/h	00:44.249	01:11.855	101,70 km/h
		Lauf 5:	00:03.934	00:02.089	*	* km/h	*	01:11.208	102,63 km/h
12	266	ANDRES Horst		VW Polo					
		Lauf 1:	00:03.735	00:01.983	*	* km/h	*	01:15.593	96,68 km/h
		Lauf 2:	00:03.800	00:02.032	00:21.782	126,67 km/h	00:45.104	01:12.720	100,50 km/h
		Lauf 3:	00:03.687	00:01.990	00:22.112	125,55 km/h	00:45.056	01:12.846	100,32 km/h
		Lauf 4:	00:03.696	00:02.025	*	* km/h	*	01:12.188	101,24 km/h
		Lauf 5:	*	*	*	* km/h	*	*	* km/h
13	275	DINGERDISSEN Uwe		VW Polo 8V					
		Lauf 1:	00:03.950	00:02.074	*	* km/h	*	01:13.127	99,94 km/h
		Lauf 2:	00:03.903	00:02.066	00:22.062	121,09 km/h	00:45.337	01:13.370	99,60 km/h
		Lauf 3:	00:04.044	00:02.204	00:22.136	120,84 km/h	00:44.086	01:12.473	100,84 km/h
		Lauf 4:	00:04.005	00:02.103	00:21.798	124,85 km/h	00:44.607	01:12.516	100,78 km/h
		Lauf 5:	*	*	*	* km/h	*	*	* km/h
14	281	SCHIERMEISTER Arne		Opel Risse Corsa					
		Lauf 1:	00:03.823	00:02.068	*	* km/h	*	01:18.303	93,33 km/h
		Lauf 2:	00:03.668	00:02.019	00:22.429	123,54 km/h	00:46.579	01:14.697	97,84 km/h
		Lauf 3:	00:03.708	00:02.012	00:22.654	122,96 km/h	00:46.089	01:14.466	98,14 km/h
		Lauf 4:	00:03.649	00:01.991	00:21.975	122,66 km/h	00:45.345	01:12.962	100,16 km/h
		Lauf 5:	*	*	*	* km/h	*	*	* km/h
15	284	VITT Holger		VW Polo Twist					
		Lauf 1:	00:03.863	00:02.098	*	* km/h	*	01:14.343	98,30 km/h
		Lauf 2:	00:03.878	00:02.046	00:21.689	124,72 km/h	00:45.361	01:12.976	100,14 km/h
		Lauf 3:	00:03.806	00:02.061	00:21.873	125,07 km/h	00:45.259	01:13.001	100,11 km/h
		Lauf 4:	00:03.810	00:02.040	00:21.798	122,49 km/h	00:47.200	01:14.851	97,63 km/h
		Lauf 5:	*	*	*	* km/h	*	*	* km/h