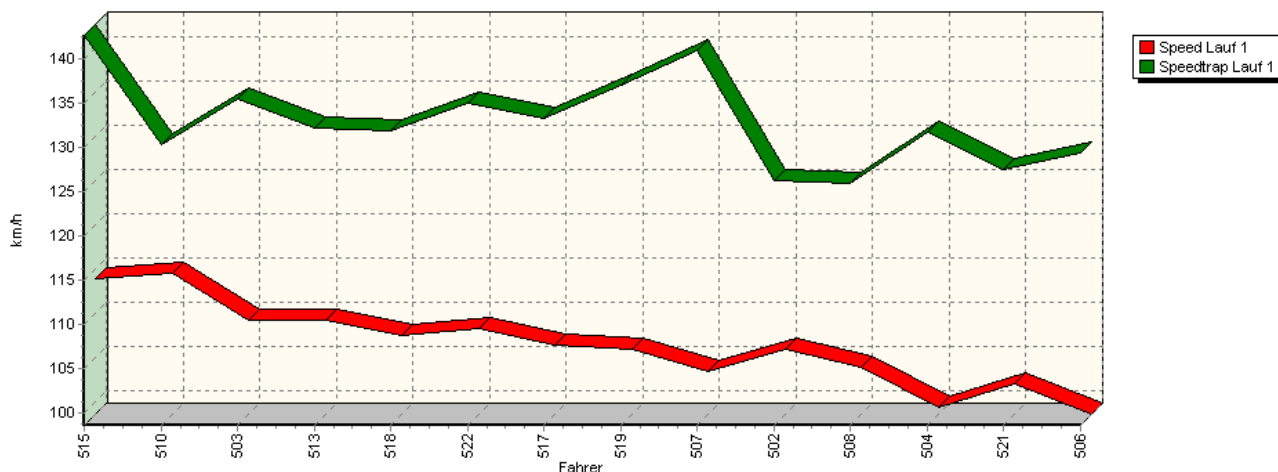
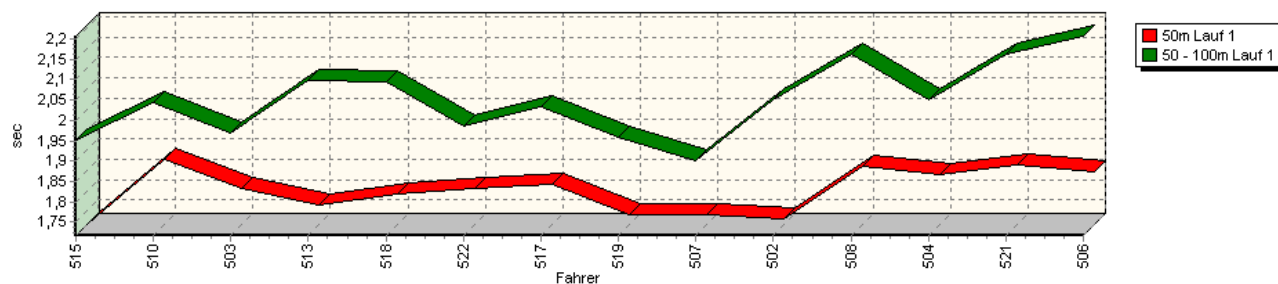


Sektorzeiten & Speeds - Gruppe H (DMSB) / H (OSK) bis 1300 ccm NSU - Klasse 19

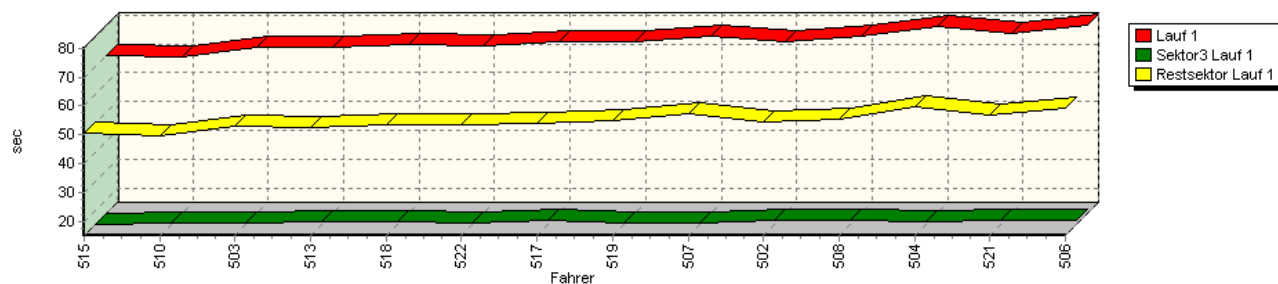
Speed-Diagramm Lauf 1



Sektor-Diagramm (Start) Lauf 1

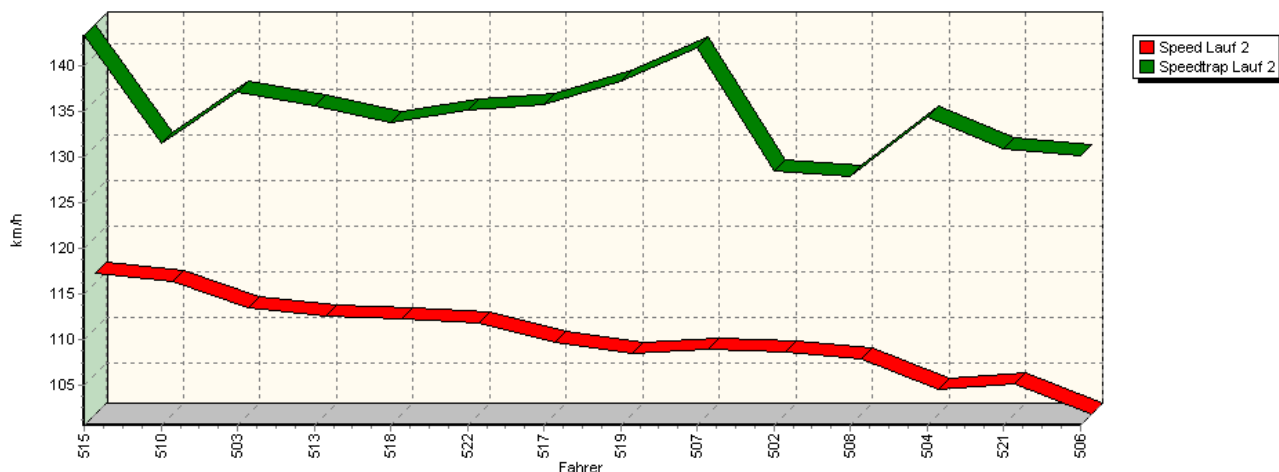


Sektor-Diagramm (Rest) Lauf 1

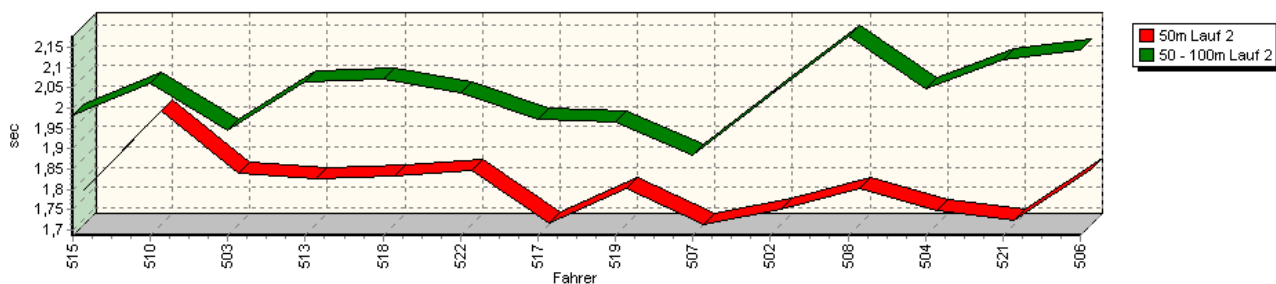


Sektorzeiten & Speeds - Gruppe H (DMSB) / H (OSK) bis 1300 ccm NSU - Klasse 19

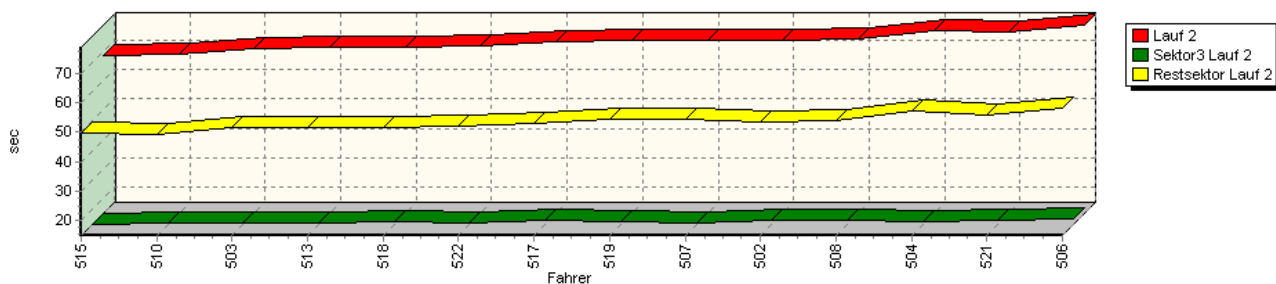
Speed-Diagramm Lauf 2



Sektor-Diagramm (Start) Lauf 2

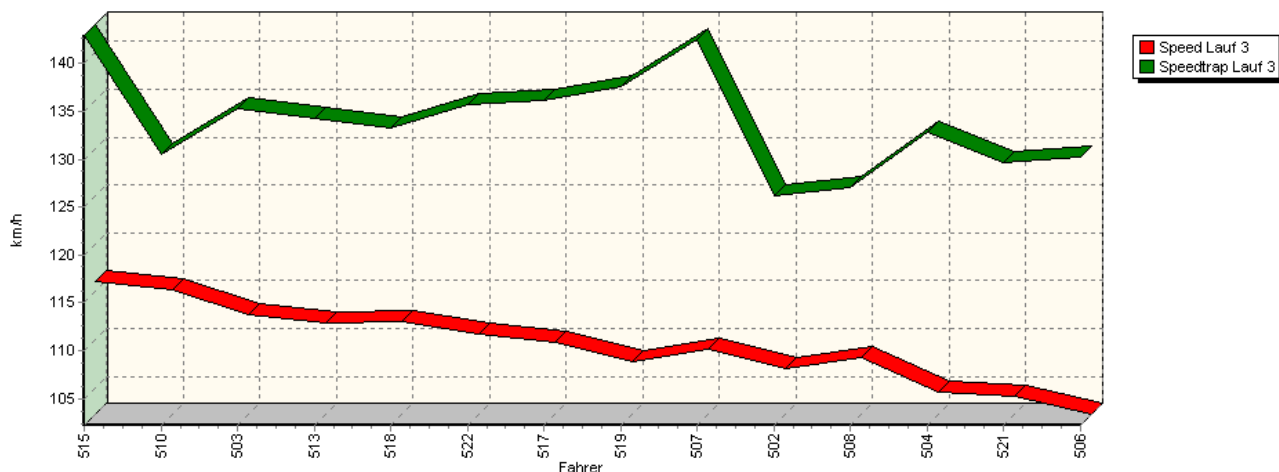


Sektor-Diagramm (Rest) Lauf 2

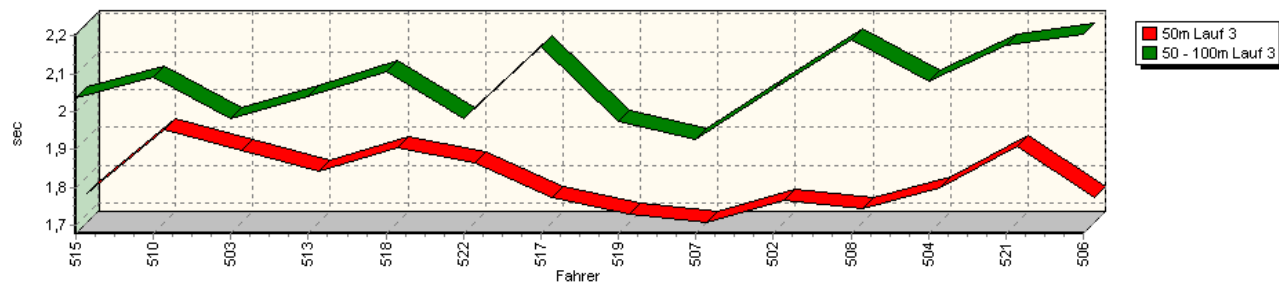


Sektorzeiten & Speeds - Gruppe H (DMSB) / H (OSK) bis 1300 ccm NSU - Klasse 19

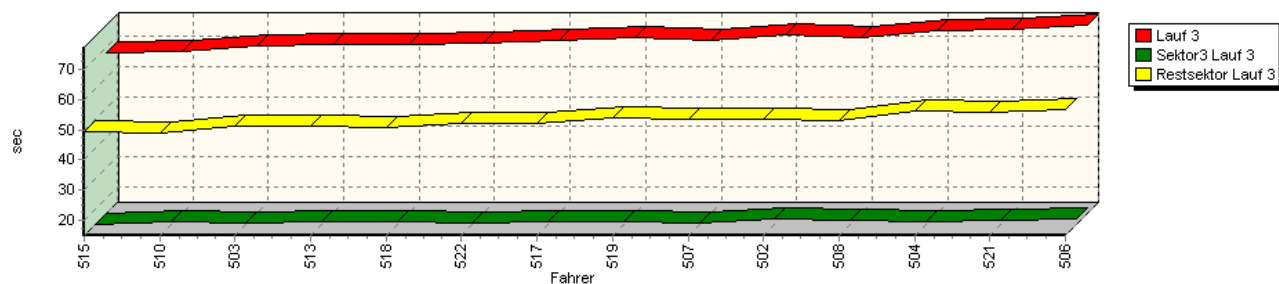
Speed-Diagramm Lauf 3



Sektor-Diagramm (Start) Lauf 3

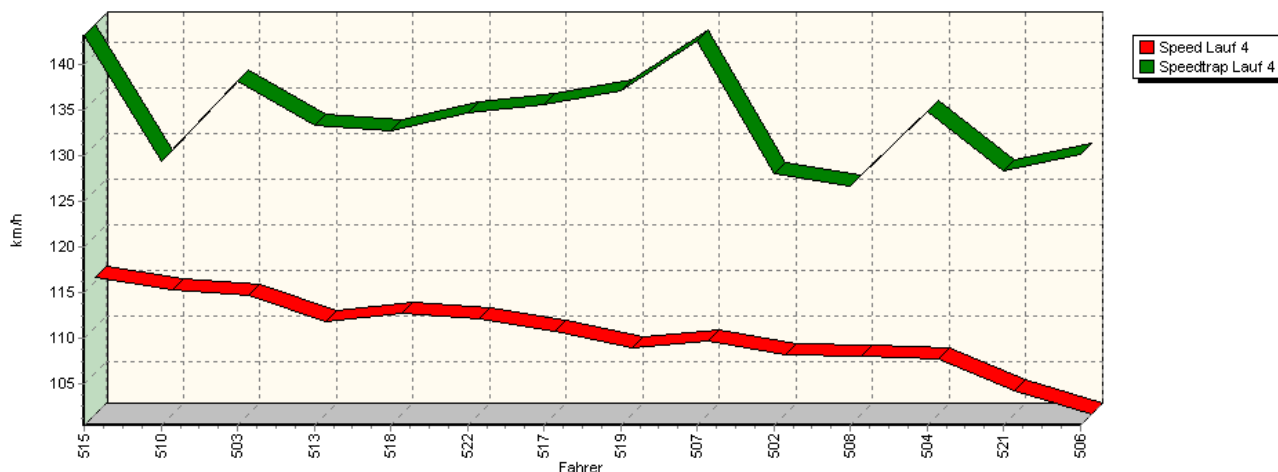


Sektor-Diagramm (Rest) Lauf 3

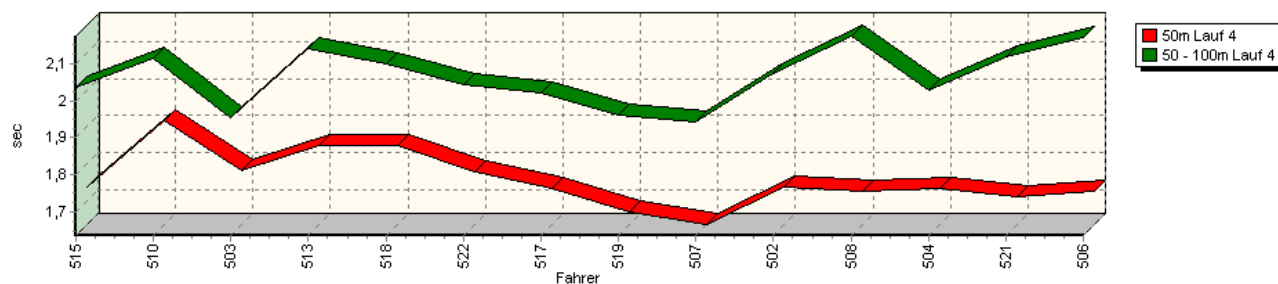


Sektorzeiten & Speeds - Gruppe H (DMSB) / H (OSK) bis 1300 ccm NSU - Klasse 19

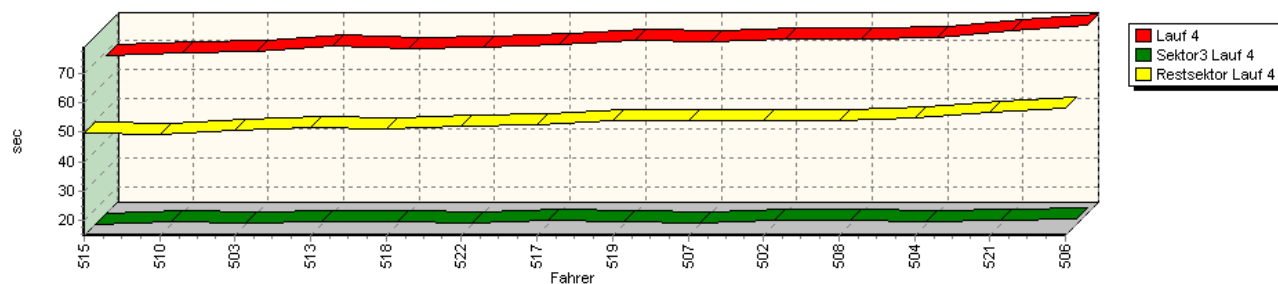
Speed-Diagramm Lauf 4



Sektor-Diagramm (Start) Lauf 4



Sektor-Diagramm (Rest) Lauf 4



Rg.	Nr.	Sektor 1 (15m)	Sektor 2 (15-50m)	Sektor 3	Speed Trap	Sektor 4	Laufzeit	Speed (Lauf)	
1	515	SCHINDLER Uwe		NSU KWR					
		Lauf 1:	00:01.717	00:01.952	00:15.220	142,61 km/h	00:50.662	01:09.551	113,87 km/h
		Lauf 2:	00:01.770	00:01.982	00:14.966	143,40 km/h	00:49.535	01:08.253	116,04 km/h
		Lauf 3:	00:01.755	00:02.038	00:14.832	142,93 km/h	00:49.572	01:08.197	116,13 km/h
		Lauf 4:	00:01.737	00:02.036	00:14.905	143,22 km/h	00:49.893	01:08.571	115,50 km/h

Sektorzeiten & Speeds - Gruppe H (DMSB) / H (OSK) bis 1300 ccm NSU - Klasse 19

Rg.	Nr.		Sektor 1 (15m)	Sektor 2 (15-50m)	Sektor 3	Speed Trap	Sektor 4	Laufzeit	Speed (Lauf)
2	510	HOFMANN Steffen	NSU TT						
		Lauf 1:	00:01.878	00:02.045	00:15.760	130,31 km/h	00:49.448	01:09.131	114,57 km/h
		Lauf 2:	00:01.965	00:02.062	00:15.634	131,56 km/h	00:49.087	01:08.748	115,20 km/h
		Lauf 3:	00:01.923	00:02.090	00:15.591	130,49 km/h	00:49.116	01:08.720	115,25 km/h
		Lauf 4:	00:01.917	00:02.115	00:15.905	129,48 km/h	00:49.406	01:09.343	114,22 km/h
3	503	NIEDERMANN Johannes	NSU 1000 C						
		Lauf 1:	00:01.806	00:01.969	00:15.584	135,37 km/h	00:53.203	01:12.562	109,15 km/h
		Lauf 2:	00:01.811	00:01.944	00:15.359	137,15 km/h	00:51.412	01:10.526	112,30 km/h
		Lauf 3:	00:01.867	00:01.983	00:15.485	135,28 km/h	00:51.054	01:10.389	112,52 km/h
		Lauf 4:	00:01.783	00:01.955	00:15.235	138,17 km/h	00:50.787	01:09.760	113,53 km/h
4	513	FASSBENDER Walter	NSU Grewe						
		Lauf 1:	00:01.763	00:02.098	00:16.261	132,09 km/h	00:52.436	01:12.558	109,15 km/h
		Lauf 2:	00:01.798	00:02.064	00:15.650	135,65 km/h	00:51.559	01:11.071	111,44 km/h
		Lauf 3:	00:01.815	00:02.039	00:15.741	134,19 km/h	00:51.285	01:10.880	111,74 km/h
		Lauf 4:	00:01.851	00:02.140	00:15.887	133,43 km/h	00:51.683	01:11.561	110,68 km/h
5	518	HÖLLERICH Nicola	NSU TT						
		Lauf 1:	00:01.792	00:02.094	00:16.400	131,82 km/h	00:53.396	01:13.682	107,49 km/h
		Lauf 2:	00:01.807	00:02.072	00:15.833	133,90 km/h	00:51.543	01:11.255	111,15 km/h
		Lauf 3:	00:01.876	00:02.105	00:15.948	133,26 km/h	00:50.913	01:10.842	111,80 km/h
		Lauf 4:	00:01.849	00:02.098	00:15.842	132,84 km/h	00:51.171	01:10.960	111,61 km/h
6	522	ANGELBERGER Volker	NSU TT						
		Lauf 1:	00:01.804	00:01.986	00:15.779	135,00 km/h	00:53.546	01:13.115	108,32 km/h
		Lauf 2:	00:01.820	00:02.036	00:15.590	135,15 km/h	00:52.097	01:11.543	110,70 km/h
		Lauf 3:	00:01.837	00:01.981	00:15.457	135,69 km/h	00:52.382	01:11.657	110,53 km/h
		Lauf 4:	00:01.778	00:02.045	00:15.469	134,79 km/h	00:52.100	01:11.392	110,94 km/h
7	517	VOGEL Michael	NSU TT Davidovic						
		Lauf 1:	00:01.817	00:02.035	00:16.422	133,27 km/h	00:54.127	01:14.401	106,45 km/h
		Lauf 2:	00:01.690	00:01.973	00:16.219	135,79 km/h	00:53.112	01:12.994	108,50 km/h
		Lauf 3:	00:01.743	00:02.171	00:15.953	136,10 km/h	00:52.363	01:12.230	109,65 km/h
		Lauf 4:	00:01.733	00:02.022	00:16.102	135,68 km/h	00:52.370	01:12.227	109,65 km/h
8	519	DAVIDOVIC Jörg	NSU TT						
		Lauf 1:	00:01.740	00:01.957	00:15.908	136,96 km/h	00:55.095	01:14.700	106,02 km/h
		Lauf 2:	00:01.775	00:01.964	00:15.714	138,45 km/h	00:54.315	01:13.768	107,36 km/h
		Lauf 3:	00:01.699	00:01.975	00:15.644	137,62 km/h	00:54.191	01:13.509	107,74 km/h
		Lauf 4:	00:01.669	00:01.961	00:15.793	137,11 km/h	00:54.022	01:13.445	107,84 km/h
9	507	FLEISCHER Horst	NSU KWR						
		Lauf 1:	00:01.742	00:01.901	00:15.727	140,97 km/h	00:57.175	01:16.545	103,47 km/h
		Lauf 2:	00:01.686	00:01.884	00:15.548	142,01 km/h	00:54.408	01:13.526	107,72 km/h
		Lauf 3:	00:01.678	00:01.927	00:15.367	142,52 km/h	00:53.664	01:12.636	109,04 km/h
		Lauf 4:	00:01.637	00:01.942	00:15.430	142,59 km/h	00:53.945	01:12.954	108,56 km/h
10	502	RABUS Leonhard	NSU Einfalt TT						
		Lauf 1:	00:01.730	00:02.050	00:16.688	126,21 km/h	00:54.277	01:14.745	105,96 km/h
		Lauf 2:	00:01.722	00:02.031	00:16.531	128,49 km/h	00:53.387	01:13.671	107,50 km/h
		Lauf 3:	00:01.735	00:02.058	00:16.548	126,23 km/h	00:53.741	01:14.082	106,91 km/h
		Lauf 4:	00:01.736	00:02.072	00:16.416	128,11 km/h	00:53.731	01:13.955	107,09 km/h

Sektorzeiten & Speeds - Gruppe H (DMSB) / H (OSK) bis 1300 ccm NSU - Klasse 19

Rg.	Nr.		Sektor 1 (15m)	Sektor 2 (15-50m)	Sektor 3	Speed Trap	Sektor 4	Laufzeit	Speed (Lauf)
11	508	HOFMANN Gerhard		NSU TT					
		Lauf 1:	00:01.861	00:02.164	00:16.784	125,91 km/h	00:55.454	01:16.263	103,85 km/h
		Lauf 2:	00:01.776	00:02.177	00:16.454	127,98 km/h	00:53.774	01:14.181	106,77 km/h
		Lauf 3:	00:01.714	00:02.192	00:16.400	126,97 km/h	00:52.933	01:13.239	108,14 km/h
		Lauf 4:	00:01.727	00:02.174	00:16.519	126,78 km/h	00:53.696	01:14.116	106,86 km/h
12	504	SZOTT Roman		NSU TT					
		Lauf 1:	00:01.841	00:02.052	00:16.243	131,70 km/h	00:59.547	01:19.683	99,39 km/h
		Lauf 2:	00:01.721	00:02.047	00:15.728	134,53 km/h	00:57.119	01:16.615	103,37 km/h
		Lauf 3:	00:01.768	00:02.081	00:15.905	132,75 km/h	00:56.081	01:15.835	104,44 km/h
		Lauf 4:	00:01.734	00:02.029	00:15.790	134,89 km/h	00:54.807	01:14.360	106,51 km/h
13	521	VOIGT Walter		NSU TT					
		Lauf 1:	00:01.863	00:02.163	00:16.877	127,51 km/h	00:56.748	01:17.651	102,00 km/h
		Lauf 2:	00:01.697	00:02.118	00:16.432	130,95 km/h	00:55.954	01:16.201	103,94 km/h
		Lauf 3:	00:01.878	00:02.176	00:16.321	129,58 km/h	00:55.684	01:16.059	104,13 km/h
		Lauf 4:	00:01.711	00:02.118	00:16.330	128,39 km/h	00:56.689	01:16.848	103,06 km/h
14	506	SCHABACKER Pit		NSU Davidovic TT/67					
		Lauf 1:	00:01.847	00:02.207	00:16.861	129,31 km/h	00:59.394	01:20.309	98,62 km/h
		Lauf 2:	00:01.823	00:02.142	00:16.621	130,19 km/h	00:58.106	01:18.692	100,65 km/h
		Lauf 3:	00:01.743	00:02.205	00:16.690	130,18 km/h	00:56.866	01:17.504	102,19 km/h
		Lauf 4:	00:01.727	00:02.170	00:16.720	130,26 km/h	00:58.174	01:18.791	100,52 km/h