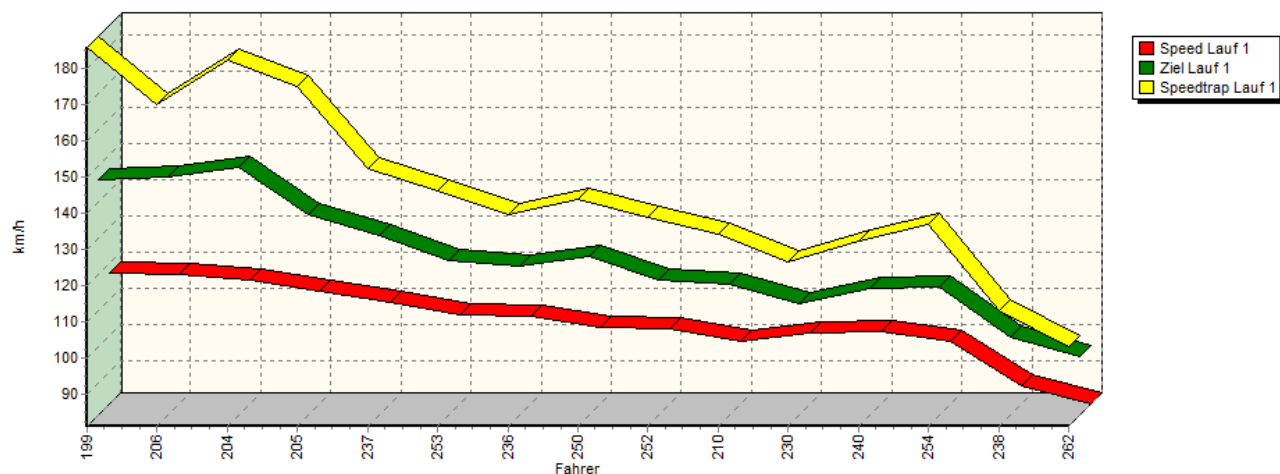
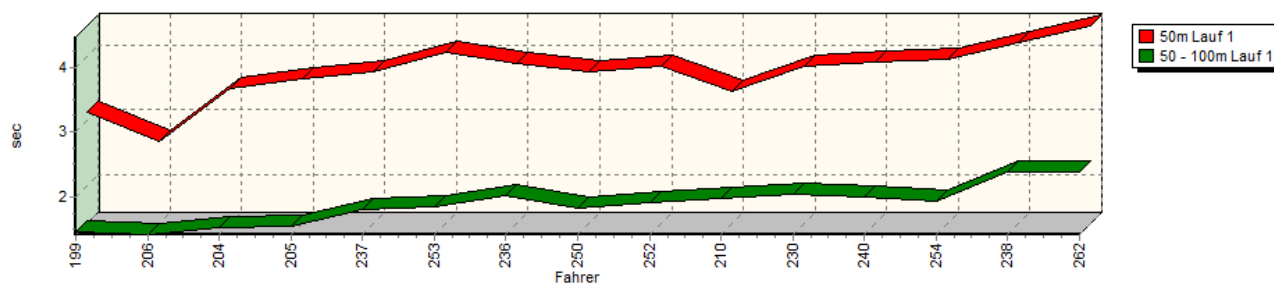


## Sektorzeiten & Speeds - Rennen - Gruppe E1/FS

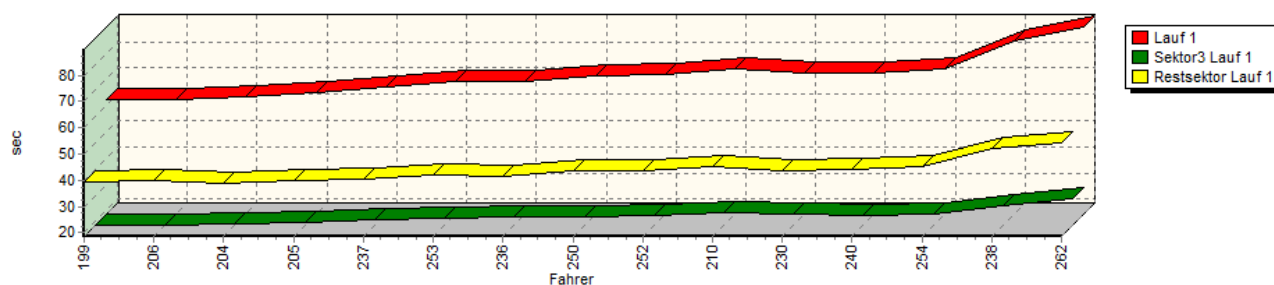
### Speed-Diagramm Lauf 1



### Sektor-Diagramm (Start) Lauf 1

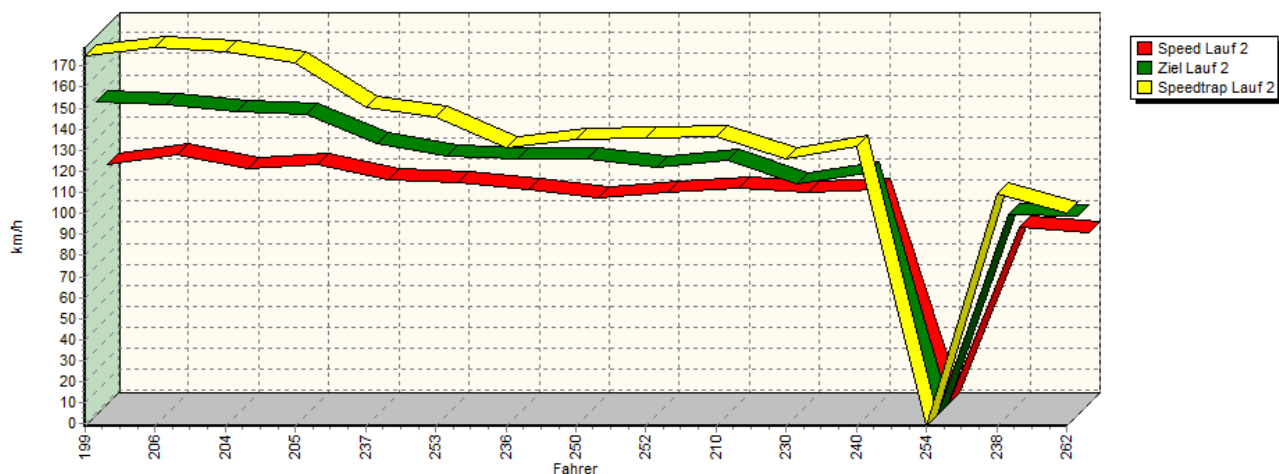


### Sektor-Diagramm (Rest) Lauf 1

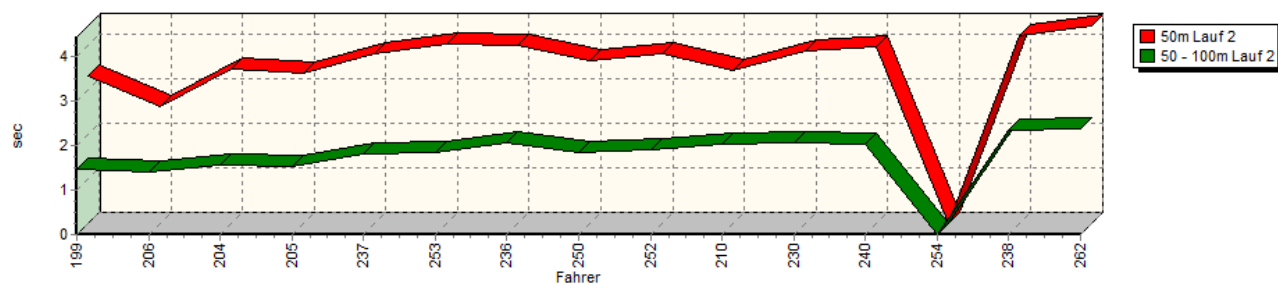


## Sektorzeiten & Speeds - Rennen - Gruppe E1/FS

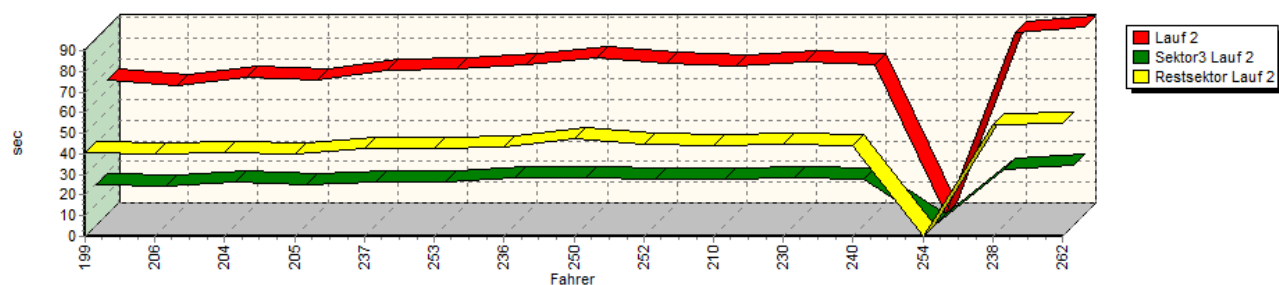
### Speed-Diagramm Lauf 2



### Sektor-Diagramm (Start) Lauf 2

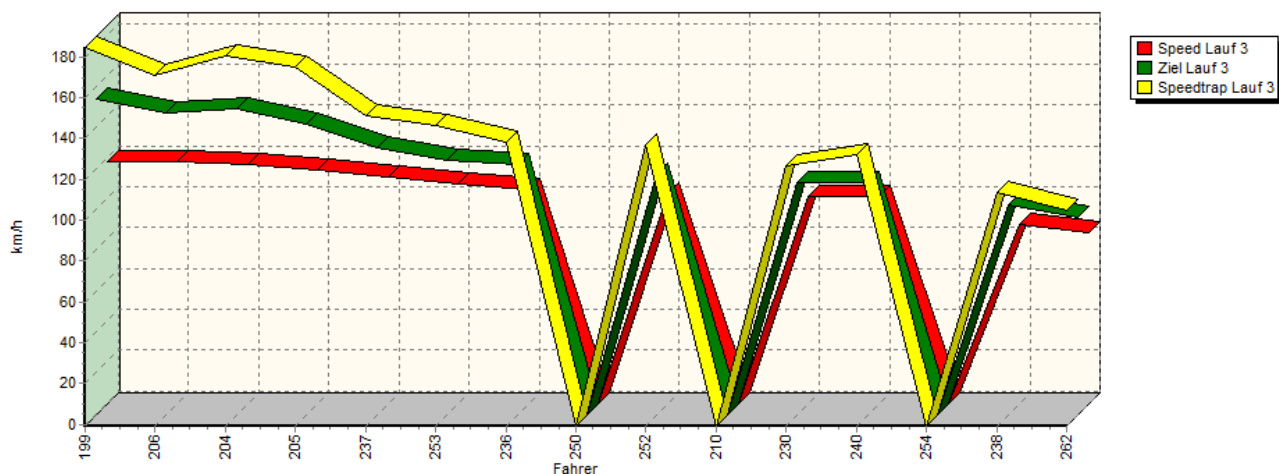


### Sektor-Diagramm (Rest) Lauf 2

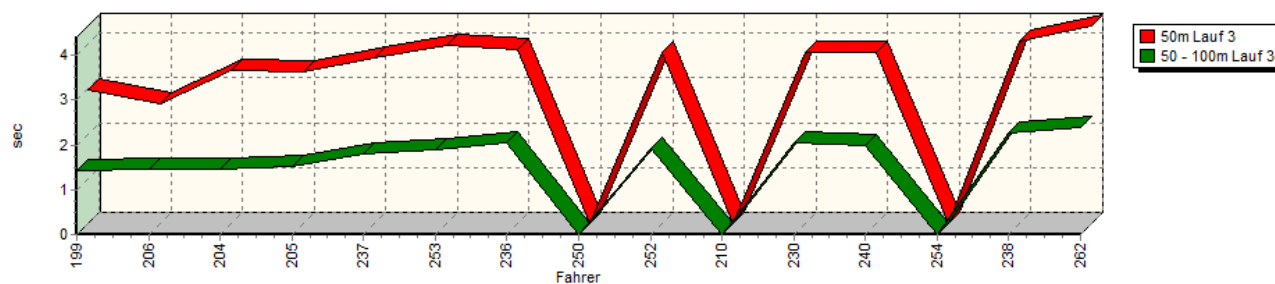


## Sektorzeiten & Speeds - Rennen - Gruppe E1/FS

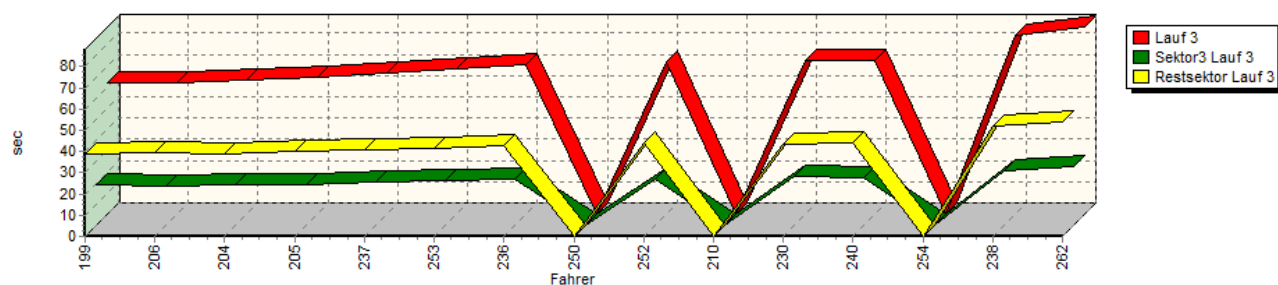
### Speed-Diagramm Lauf 3



### Sektor-Diagramm (Start) Lauf 3

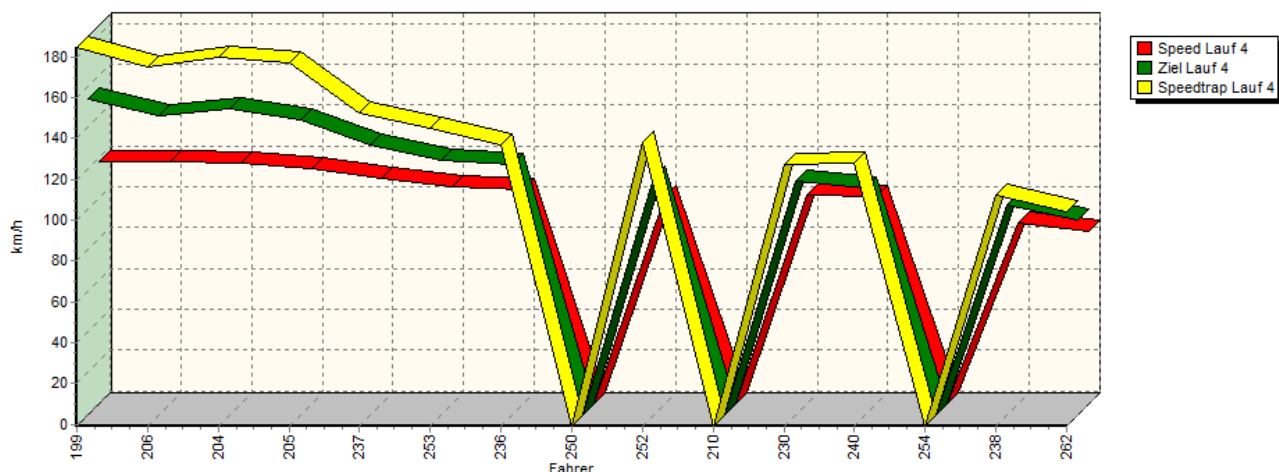


### Sektor-Diagramm (Rest) Lauf 3

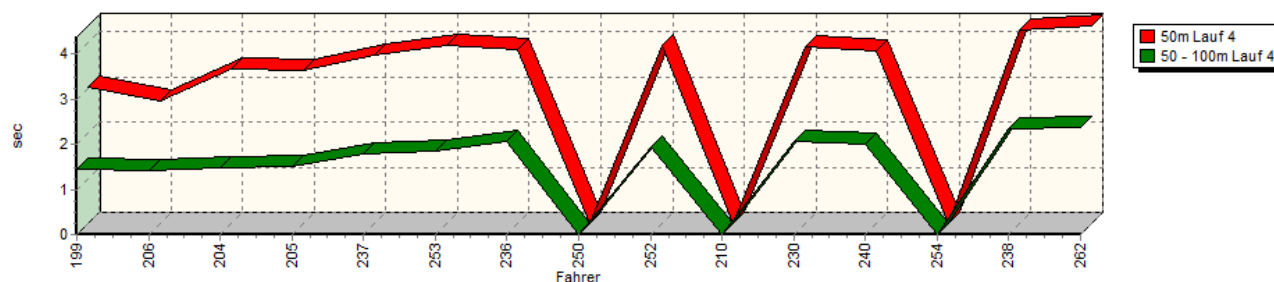


## Sektorzeiten & Speeds - Rennen - Gruppe E1/FS

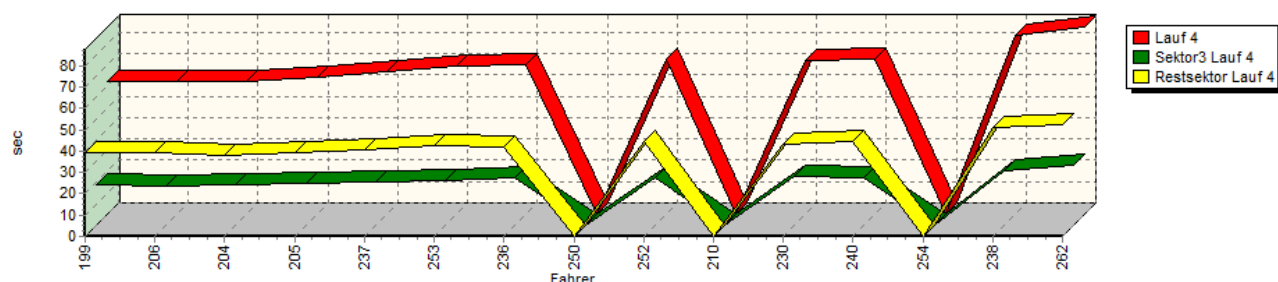
### Speed-Diagramm Lauf 4



### Sektor-Diagramm (Start) Lauf 4



### Sektor-Diagramm (Rest) Lauf 4



Rg.	Nr.	Sektor 1 (50m)	Sektor 2 (50-100m)	Sektor 3	Speed Trap	Sektor 4	Speed (Ziel)	Laufzeit	Speed (Lauf)	
1	199	<b>STOLZ Herbert</b>		Porsche 935 DP II						
		Lauf 1:	00:03.135	00:01.452	00:18.603	185,69 km/h	00:39.115	145,97 km/h	01:02.305	117,29 km/h
		Lauf 2:	00:03.304	00:01.462	00:19.420	175,07 km/h	00:40.810	147,71 km/h	01:04.996	112,44 km/h
		Lauf 3:	00:02.990	00:01.436	00:18.804	184,66 km/h	00:38.691	153,79 km/h	01:01.921	118,02 km/h
		Lauf 4:	00:03.018	00:01.447	00:18.741	184,60 km/h	00:38.905	154,18 km/h	01:02.111	117,66 km/h

## Sektorzeiten & Speeds - Rennen - Gruppe E1/FS

Rg.	Nr.		Sektor 1 (50m)	Sektor 2 (50-100m)	Sektor 3	Speed Trap	Sektor 4	Speed (Ziel)	Laufzeit	Speed (Lauf)
2	206	<b>BÜELER Toni</b>		Mitsubishi Lancer EVO 6 RS						
		Lauf 1:	00:02.689	00:01.414	00:18.595	169,93 km/h	00:39.678	146,91 km/h	01:02.376	117,16 km/h
		Lauf 2:	00:02.628	00:01.392	00:18.670	178,76 km/h	00:39.704	146,32 km/h	01:02.394	117,13 km/h
		Lauf 3:	00:02.659	00:01.453	00:18.489	170,94 km/h	00:39.355	147,25 km/h	01:01.956	117,96 km/h
		Lauf 4:	00:02.700	00:01.409	00:18.541	174,91 km/h	00:39.312	145,61 km/h	01:01.962	117,94 km/h
3	204	<b>MICHL Dan</b>		Opel Michl 2.8						
		Lauf 1:	00:03.487	00:01.516	00:19.169	182,22 km/h	00:39.080	149,65 km/h	01:03.252	115,54 km/h
		Lauf 2:	00:03.459	00:01.563	00:20.716	176,66 km/h	00:40.328	143,06 km/h	01:06.066	110,62 km/h
		Lauf 3:	00:03.419	00:01.467	00:19.177	180,61 km/h	00:38.865	149,04 km/h	01:02.928	116,13 km/h
		Lauf 4:	00:03.425	00:01.486	00:19.228	179,52 km/h	00:38.159	149,04 km/h	01:02.298	117,31 km/h
4	205	<b>SCHREY Daniel</b>		Dodge Viper GTS-R						
		Lauf 1:	00:03.636	00:01.544	00:19.814	174,83 km/h	00:40.006	136,68 km/h	01:05.000	112,43 km/h
		Lauf 2:	00:03.375	00:01.525	00:19.801	171,82 km/h	00:40.291	141,51 km/h	01:04.992	112,44 km/h
		Lauf 3:	00:03.381	00:01.516	00:19.160	175,16 km/h	00:40.396	141,96 km/h	01:04.453	113,39 km/h
		Lauf 4:	00:03.399	00:01.520	00:19.404	177,38 km/h	00:39.494	143,82 km/h	01:03.817	114,51 km/h
5	237	<b>SCHÖNBORN Rainer</b>		VW Golf I 16V						
		Lauf 1:	00:03.745	00:01.791	00:20.681	152,35 km/h	00:40.613	130,78 km/h	01:06.830	109,35 km/h
		Lauf 2:	00:03.808	00:01.798	00:21.160	150,13 km/h	00:42.775	127,67 km/h	01:09.541	105,09 km/h
		Lauf 3:	00:03.683	00:01.787	00:20.340	151,43 km/h	00:40.606	130,34 km/h	01:06.416	110,03 km/h
		Lauf 4:	00:03.738	00:01.789	00:20.557	152,82 km/h	00:40.548	131,14 km/h	01:06.632	109,68 km/h
6	253	<b>LEWE Manfred</b>		VW Brügge Golf 20V						
		Lauf 1:	00:04.054	00:01.851	00:21.068	146,11 km/h	00:42.093	124,05 km/h	01:09.066	105,81 km/h
		Lauf 2:	00:04.022	00:01.852	00:21.327	145,80 km/h	00:42.994	121,60 km/h	01:10.195	104,11 km/h
		Lauf 3:	00:03.971	00:01.877	00:20.936	146,13 km/h	00:41.735	123,69 km/h	01:08.519	106,66 km/h
		Lauf 4:	00:03.943	00:01.850	00:21.218	145,11 km/h	00:42.171	124,08 km/h	01:09.182	105,63 km/h
7	236	<b>SCHUSTER Jürgen</b>		Mazda RX-7						
		Lauf 1:	00:03.878	00:02.018	00:21.733	139,49 km/h	00:41.545	122,34 km/h	01:09.174	105,65 km/h
		Lauf 2:	00:03.974	00:02.055	00:23.113	131,27 km/h	00:43.420	120,54 km/h	01:12.562	100,71 km/h
		Lauf 3:	00:03.864	00:02.035	00:21.747	138,21 km/h	00:42.533	122,18 km/h	01:10.179	104,13 km/h
		Lauf 4:	00:03.863	00:02.070	00:22.195	136,67 km/h	00:42.110	121,54 km/h	01:10.238	104,05 km/h
8	250	<b>VOSS Andreas</b>		VW Misczyk Golf						
		Lauf 1:	00:03.753	00:01.830	00:21.986	144,01 km/h	00:43.765	125,06 km/h	01:11.334	102,45 km/h
		Lauf 2:	00:03.630	00:01.828	00:23.094	134,99 km/h	00:47.104	120,91 km/h	01:15.656	96,60 km/h
		Lauf 3:	*	*	*	* km/h	*	* km/h	*	* km/h
		Lauf 4:	*	*	*	* km/h	*	* km/h	*	* km/h
9	252	<b>JURISIC Mario</b>		Citroën AX						
		Lauf 1:	00:03.847	00:01.918	00:22.096	138,88 km/h	00:43.710	118,57 km/h	01:11.571	102,11 km/h
		Lauf 2:	00:03.814	00:01.906	00:22.617	135,94 km/h	00:44.923	116,95 km/h	01:13.260	99,76 km/h
		Lauf 3:	00:03.810	00:01.919	00:21.973	136,94 km/h	00:43.807	116,85 km/h	01:11.509	102,20 km/h
		Lauf 4:	00:03.929	00:01.936	00:22.397	138,10 km/h	00:44.413	115,37 km/h	01:12.675	100,56 km/h
10	210	<b>KREMER Yves</b>		Subaru STI						
		Lauf 1:	00:03.460	00:01.979	00:23.299	134,07 km/h	00:45.339	117,45 km/h	01:14.077	98,65 km/h
		Lauf 2:	00:03.423	00:02.013	00:22.465	136,74 km/h	00:43.923	119,75 km/h	01:11.824	101,75 km/h
		Lauf 3:	*	*	*	* km/h	*	* km/h	A	* km/h
		Lauf 4:	*	*	*	* km/h	*	* km/h	*	* km/h

### Sektorzeiten & Speeds - Rennen - Gruppe E1/FS

Rg.	Nr.		Sektor 1 (50m)	Sektor 2 (50-100m)	Sektor 3	Speed Trap	Sektor 4	Speed (Ziel)	Laufzeit	Speed (Lauf)
11	230	<b>KIESER Werner</b>	Ford Escort RS 2000							
		Lauf 1:	00:03.834	00:02.040	00:23.068	126,65 km/h	00:43.492	112,11 km/h	01:12.434	100,89 km/h
		Lauf 2:	00:03.864	00:02.046	00:23.359	126,02 km/h	00:44.409	108,99 km/h	01:13.678	99,19 km/h
		Lauf 3:	00:03.811	00:02.037	00:23.142	126,41 km/h	00:43.427	113,03 km/h	01:12.417	100,92 km/h
		Lauf 4:	00:03.910	00:02.051	00:22.867	127,45 km/h	00:43.216	113,47 km/h	01:12.044	101,44 km/h
12	240	<b>GOEDERT Georges</b>	Renault Clio Cup							
		Lauf 1:	00:03.903	00:01.992	00:22.284	132,49 km/h	00:43.975	116,35 km/h	01:12.154	101,28 km/h
		Lauf 2:	00:03.971	00:02.026	00:22.365	131,90 km/h	00:44.194	113,84 km/h	01:12.556	100,72 km/h
		Lauf 3:	00:03.830	00:01.977	00:22.306	132,34 km/h	00:44.272	113,30 km/h	01:12.385	100,96 km/h
		Lauf 4:	00:03.830	00:02.014	00:22.504	128,27 km/h	00:44.197	109,90 km/h	01:12.545	100,74 km/h
13	254	<b>HASENSTAB Franz</b>	Peugeot 206							
		Lauf 1:	00:03.957	00:01.928	00:22.904	136,84 km/h	00:45.384	116,70 km/h	01:14.173	98,53 km/h
		Lauf 2:	*	*	*	* km/h	*	* km/h	*	* km/h
		Lauf 3:	*	*	*	* km/h	*	* km/h	*	* km/h
		Lauf 4:	*	*	*	* km/h	*	* km/h	*	* km/h
14	238	<b>BECKER Sandra</b>	Renault Clio B 1.8 16V							
		Lauf 1:	00:04.201	00:02.371	00:25.966	113,22 km/h	00:52.044	102,75 km/h	01:24.582	86,40 km/h
		Lauf 2:	00:04.220	00:02.348	00:26.779	109,14 km/h	00:54.481	94,25 km/h	01:27.828	83,21 km/h
		Lauf 3:	00:04.070	00:02.279	00:25.624	113,69 km/h	00:52.249	101,77 km/h	01:24.222	86,77 km/h
		Lauf 4:	00:04.279	00:02.341	00:25.586	112,37 km/h	00:51.276	102,11 km/h	01:23.482	87,54 km/h
15	262	<b>BECKER Pascal</b>	VW Polo							
		Lauf 1:	00:04.462	00:02.383	00:28.670	103,29 km/h	00:54.394	97,24 km/h	01:29.909	81,28 km/h
		Lauf 2:	00:04.424	00:02.364	00:29.037	100,29 km/h	00:54.973	93,26 km/h	01:30.798	80,49 km/h
		Lauf 3:	00:04.405	00:02.380	00:27.734	104,75 km/h	00:53.683	95,70 km/h	01:28.202	82,86 km/h
		Lauf 4:	00:04.375	00:02.365	00:28.248	104,14 km/h	00:52.606	94,63 km/h	01:27.594	83,43 km/h