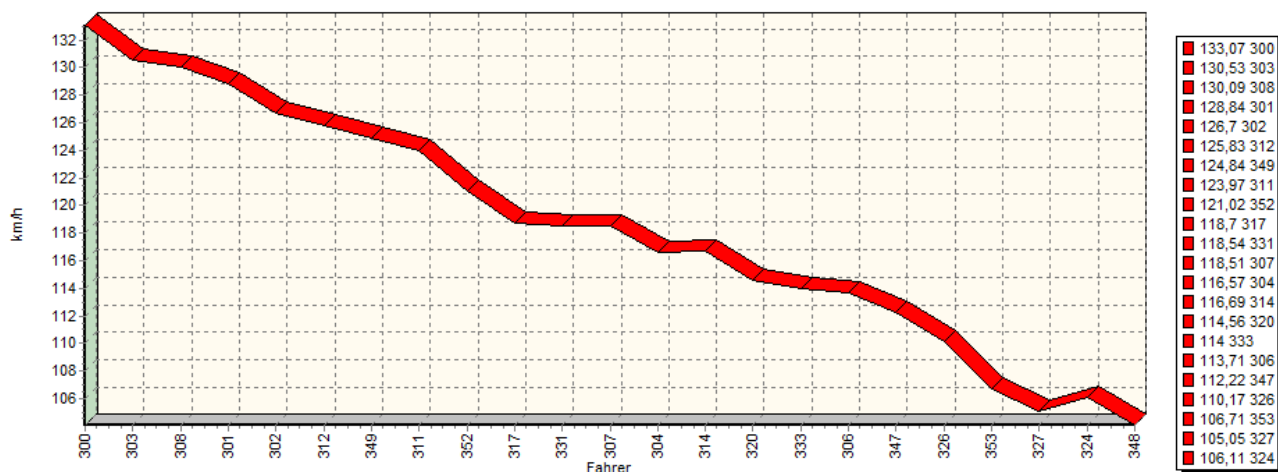
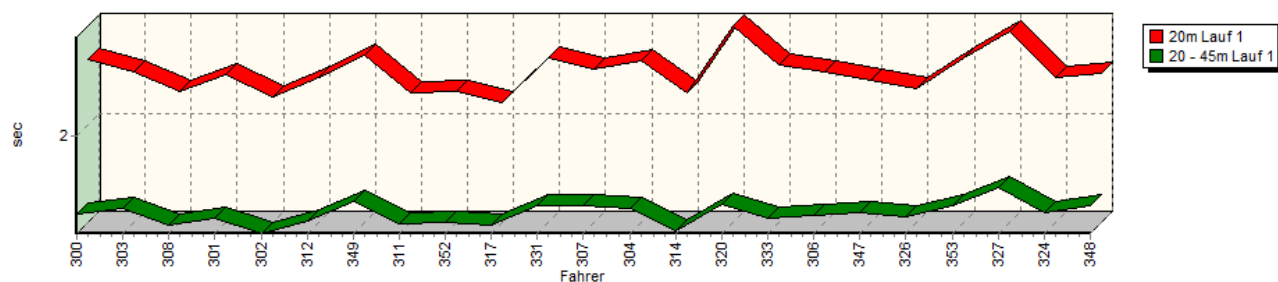


Sektorzeiten & Speeds - Rennen - Gruppe E1/H/FS/CTC/CGT bis 2000 ccm - Klasse 28

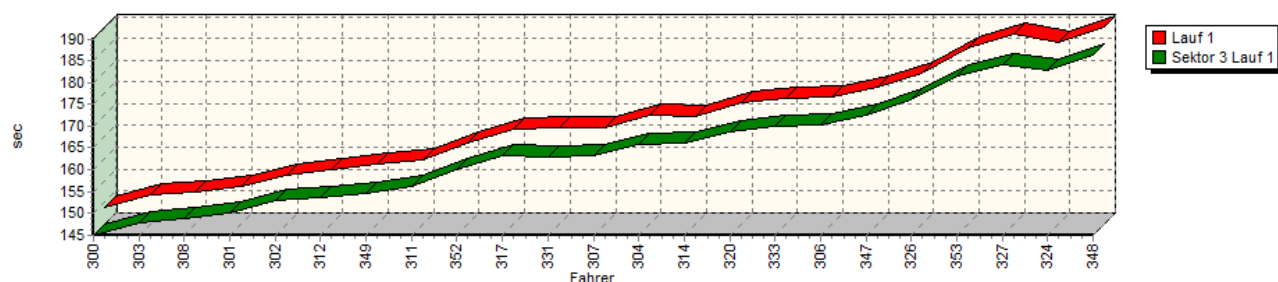
Speed-Diagramm Lauf 1

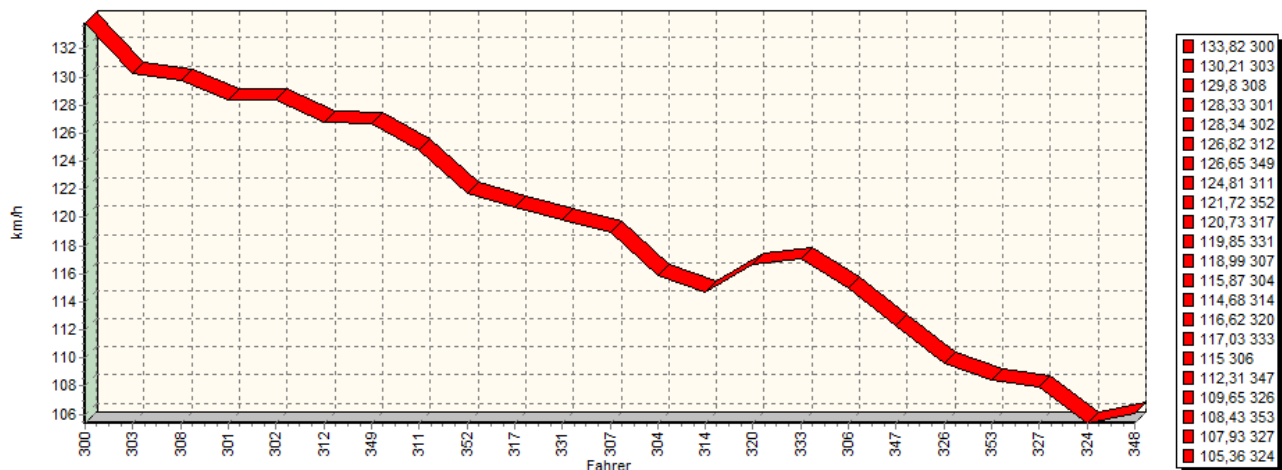
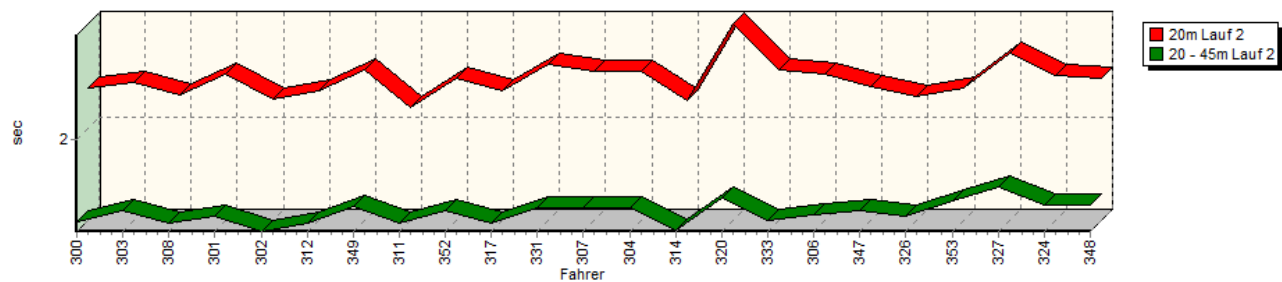
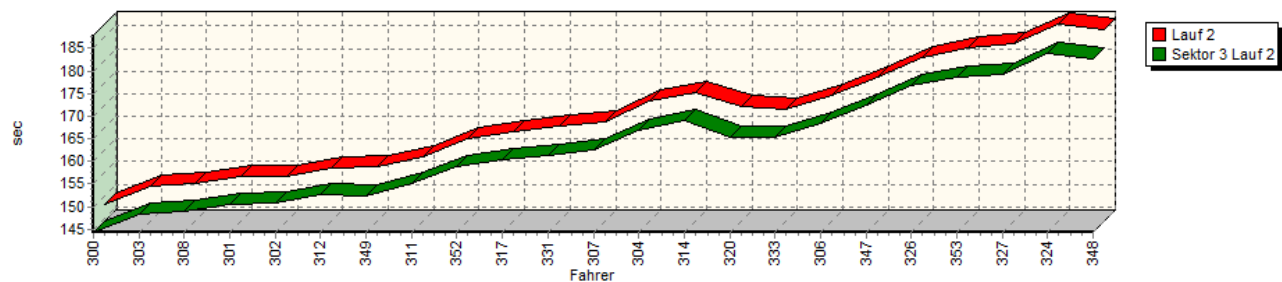


Sektor-Diagramm (Start) Lauf 1



Sektor-Diagramm (Rest) Lauf 1



Sektorzeiten & Speeds - Rennen - Gruppe E1/H/FS/CTC/CGT bis 2000 ccm - Klasse 28
Speed-Diagramm Lauf 2

Sektor-Diagramm (Start) Lauf 2

Sektor-Diagramm (Rest) Lauf 2


Rg.	Nr.	Sektor 1 (20m)	Sektor 2 (20-45m)	Sektor 3	Laufzeit	Speed (Lauf)
1	300	WEIDINGER Jörg		BMW 318i STW		
		Lauf 1:	00:02.491	00:01.415	02:24.890	133,07 km/h
		Lauf 2:	00:02.326	00:01.356	02:24.277	133,82 km/h
2	303	ELLER Hans-Peter		VW Scirocco		
		Lauf 1:	00:02.405	00:01.458	02:27.828	130,53 km/h
		Lauf 2:	00:02.365	00:01.446	02:28.247	130,21 km/h

Sektorzeiten & Speeds - Rennen - Gruppe E1/H/FS/CTC/CGT bis 2000 ccm - Klasse 28

Rg.	Nr.		Sektor 1 (20m)	Sektor 2 (20-45m)	Sektor 3	Laufzeit	Speed (Lauf)
3	308	NAUMANN Peter		VW Polo 1,4 G40			
		Lauf 1:	00:02.249	00:01.330	02:28.627	02:32.206	130,09 km/h
		Lauf 2:	00:02.274	00:01.340	02:28.927	02:32.541	129,80 km/h
4	301	WIEBE André		Renault Williams Laguna			
		Lauf 1:	00:02.383	00:01.384	02:29.908	02:33.675	128,84 km/h
		Lauf 2:	00:02.435	00:01.401	02:30.454	02:34.290	128,33 km/h
5	302	SONDERBAUER Roman		Opel Kadett C Coupé 16V			
		Lauf 1:	00:02.213	00:01.267	02:32.796	02:36.276	126,70 km/h
		Lauf 2:	00:02.233	00:01.275	02:30.769	02:34.277	128,34 km/h
6	312	WIMMER Norbert		BMW 2002 8V			
		Lauf 1:	00:02.358	00:01.358	02:33.644	02:37.360	125,83 km/h
		Lauf 2:	00:02.299	00:01.342	02:32.483	02:36.124	126,82 km/h
7	349	WIEBE Björn		Renault Williams Laguna			
		Lauf 1:	00:02.525	00:01.513	02:34.562	02:38.600	124,84 km/h
		Lauf 2:	00:02.465	00:01.473	02:32.393	02:36.331	126,65 km/h
8	311	FINK Marco		BMW 320si WTCC			
		Lauf 1:	00:02.244	00:01.345	02:36.123	02:39.712	123,97 km/h
		Lauf 2:	00:02.172	00:01.345	02:35.128	02:38.645	124,81 km/h
9	352	REITER Nicolas		Ford Escort MK I			
		Lauf 1:	00:02.250	00:01.350	02:40.005	02:43.605	121,02 km/h
		Lauf 2:	00:02.402	00:01.445	02:38.815	02:42.662	121,72 km/h
10	317	BODENMÜLLER Edmund		Opel Kadett C Coupé			
		Lauf 1:	00:02.171	00:01.326	02:43.316	02:46.813	118,70 km/h
		Lauf 2:	00:02.305	00:01.336	02:40.356	02:43.997	120,73 km/h
11	331	DÜMLER Christian		VW Golf			
		Lauf 1:	00:02.502	00:01.477	02:43.051	02:47.030	118,54 km/h
		Lauf 2:	00:02.512	00:01.458	02:41.231	02:45.201	119,85 km/h
12	307	SCHUSTER Jürgen		Mazda RX-7			
		Lauf 1:	00:02.417	00:01.476	02:43.182	02:47.075	118,51 km/h
		Lauf 2:	00:02.463	00:01.468	02:42.476	02:46.407	118,99 km/h
13	304	FLIK Thomas		Renault Clio Williams			
		Lauf 1:	00:02.484	00:01.453	02:45.924	02:49.861	116,57 km/h
		Lauf 2:	00:02.463	00:01.463	02:46.958	02:50.884	115,87 km/h
14	314	WEISS Werner		Ford Escort RS1800			
		Lauf 1:	00:02.240	00:01.288	02:46.145	02:49.673	116,69 km/h
		Lauf 2:	00:02.227	00:01.281	02:49.151	02:52.659	114,68 km/h
15	320	WIEBE Hans-Peter		Renault Williams Laguna			
		Lauf 1:	00:02.746	00:01.492	02:48.590	02:52.828	114,56 km/h
		Lauf 2:	00:02.835	00:01.544	02:45.398	02:49.777	116,62 km/h
16	333	CHRISTALL Roland		Opel Ascona B 8V			
		Lauf 1:	00:02.456	00:01.386	02:49.837	02:53.679	114,00 km/h
		Lauf 2:	00:02.475	00:01.369	02:45.342	02:49.186	117,03 km/h
17	306	FLIK Beatrice		Renault Megane Cup			
		Lauf 1:	00:02.405	00:01.403	02:50.322	02:54.130	113,71 km/h
		Lauf 2:	00:02.432	00:01.406	02:48.331	02:52.169	115,00 km/h
18	347	BODENMÜLLER Michael		Renault Clio Cup			
		Lauf 1:	00:02.340	00:01.425	02:52.676	02:56.441	112,22 km/h
		Lauf 2:	00:02.336	00:01.437	02:52.532	02:56.305	112,31 km/h

Sektorzeiten & Speeds - Rennen - Gruppe E1/H/FS/CTC/CGT bis 2000 ccm - Klasse 28

Rg.	Nr.		Sektor 1 (20m)	Sektor 2 (20-45m)	Sektor 3	Laufzeit	Speed (Lauf)
19	326	LADAGE Uwe		BMW 320 WTCC			
		Lauf 1:	00:02.278	00:01.397	02:56.041	02:59.716	110,17 km/h
		Lauf 2:	00:02.255	00:01.392	02:56.926	03:00.573	109,65 km/h
20	353	AMANN Johanna		Renault Clio Cup			
		Lauf 1:	00:02.506	00:01.475	03:01.576	03:05.557	106,71 km/h
		Lauf 2:	00:02.324	00:01.513	02:58.778	03:02.615	108,43 km/h
21	327	SPAHR Patrick		BMW 318iS			
		Lauf 1:	00:02.709	00:01.613	03:04.164	03:08.486	105,05 km/h
		Lauf 2:	00:02.601	00:01.624	02:59.218	03:03.443	107,93 km/h
22	324	SCHWANECKE Gero		VW Golf I GTI 16V			
		Lauf 1:	00:02.361	00:01.422	03:02.813	03:06.596	106,11 km/h
		Lauf 2:	00:02.422	00:01.483	03:04.026	03:07.931	105,36 km/h
23	348	DATZER Matthias		VW Golf I 8V			
		Lauf 1:	00:02.388	00:01.481	03:06.367	03:10.236	104,08 km/h
		Lauf 2:	00:02.409	00:01.488	03:02.780	03:06.677	106,07 km/h