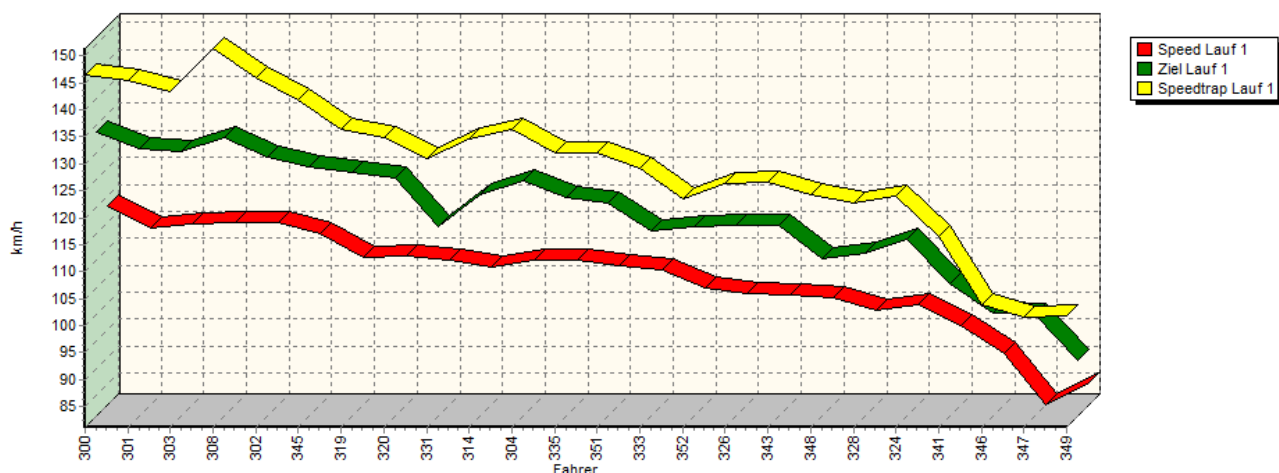
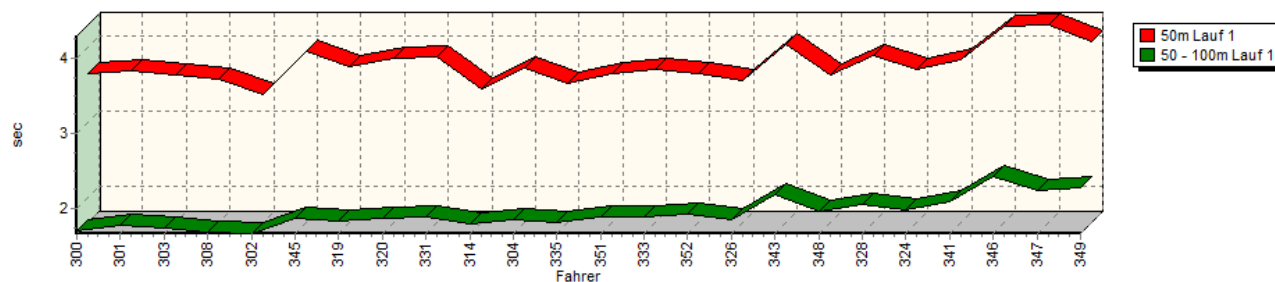


Sektorzeiten & Speeds - Rennen - Gruppe E1-FIA/E1-BERG/H/FS/CTC bis 2000 ccm - Klasse

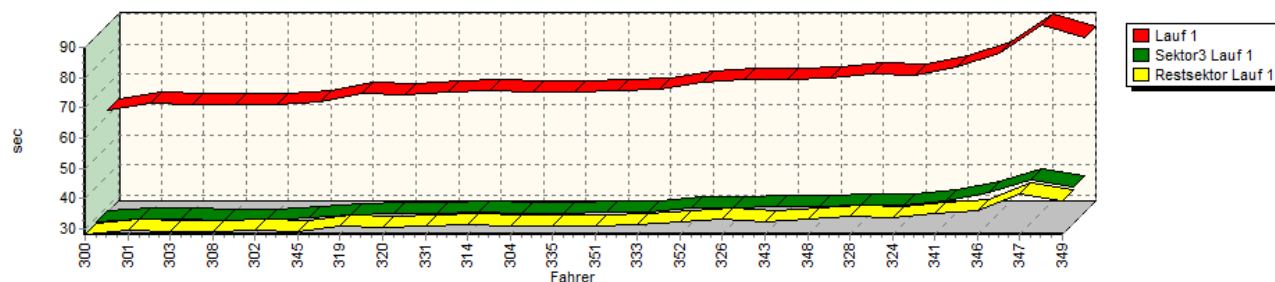
Speed-Diagramm Lauf 1



Sektor-Diagramm (Start) Lauf 1

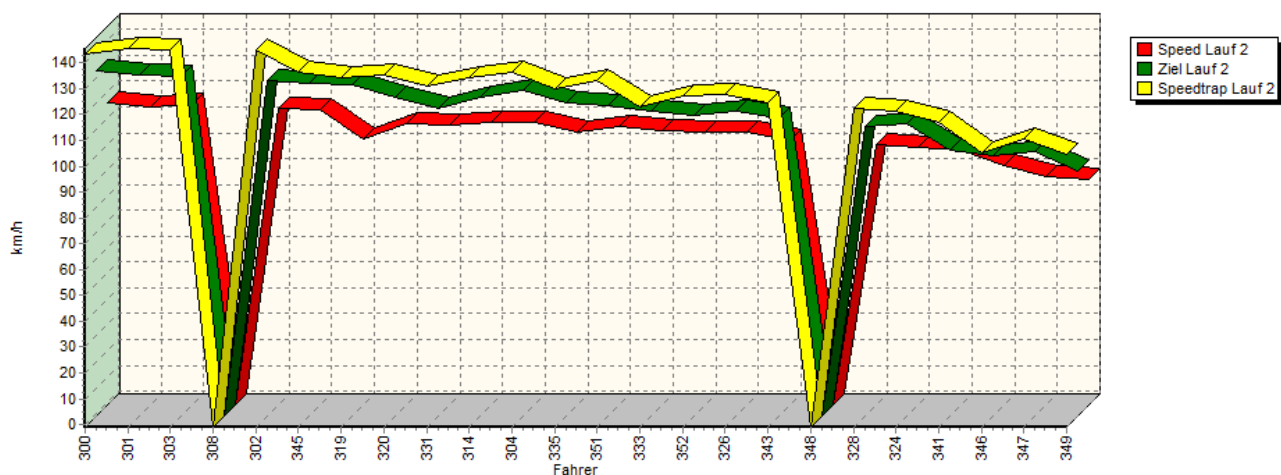


Sektor-Diagramm (Rest) Lauf 1

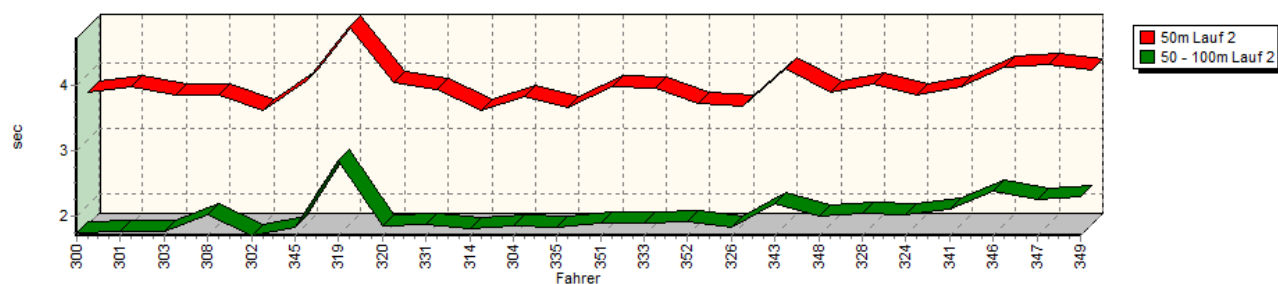


Sektorzeiten & Speeds - Rennen - Gruppe E1-FIA/E1-BERG/H/FS/CTC bis 2000 ccm - Klasse

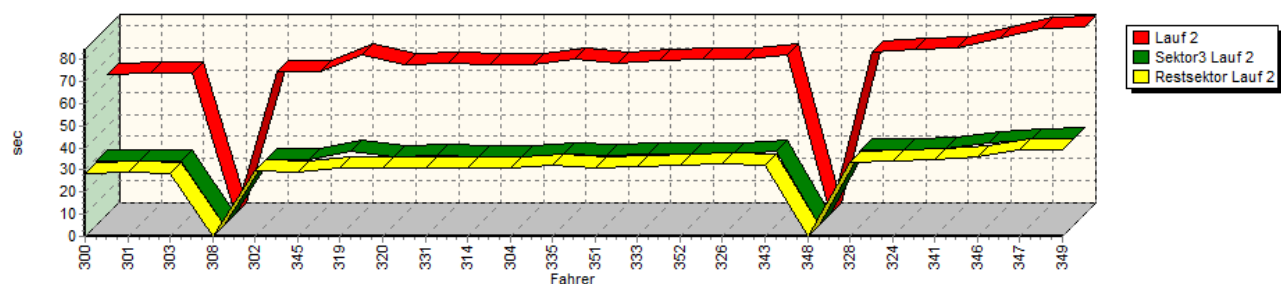
Speed-Diagramm Lauf 2



Sektor-Diagramm (Start) Lauf 2

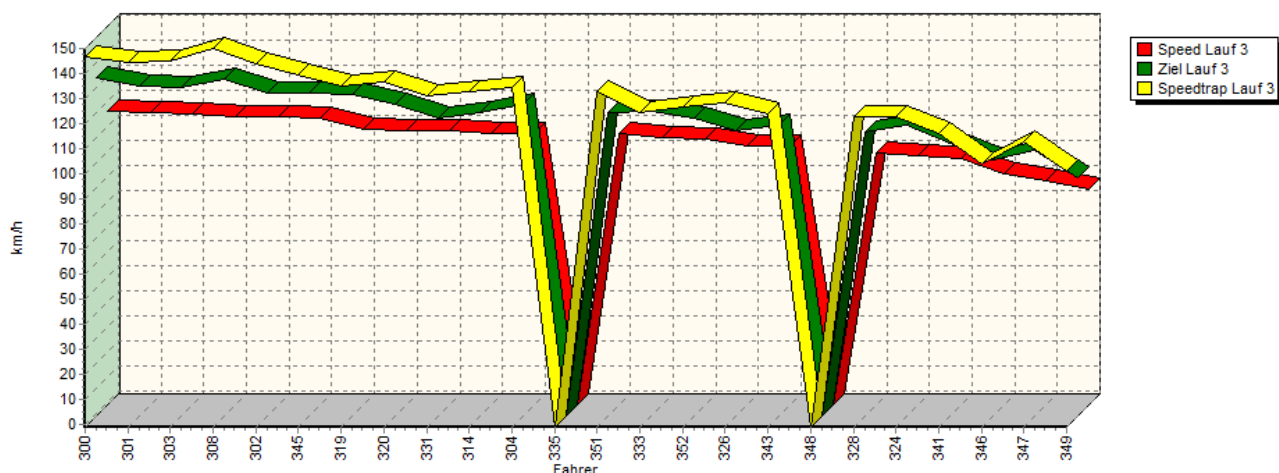


Sektor-Diagramm (Rest) Lauf 2

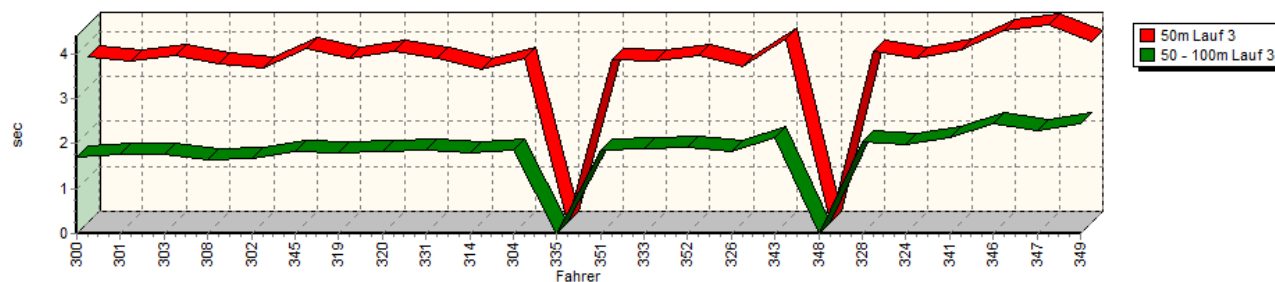


Sektorzeiten & Speeds - Rennen - Gruppe E1-FIA/E1-BERG/H/FS/CTC bis 2000 ccm - Klasse

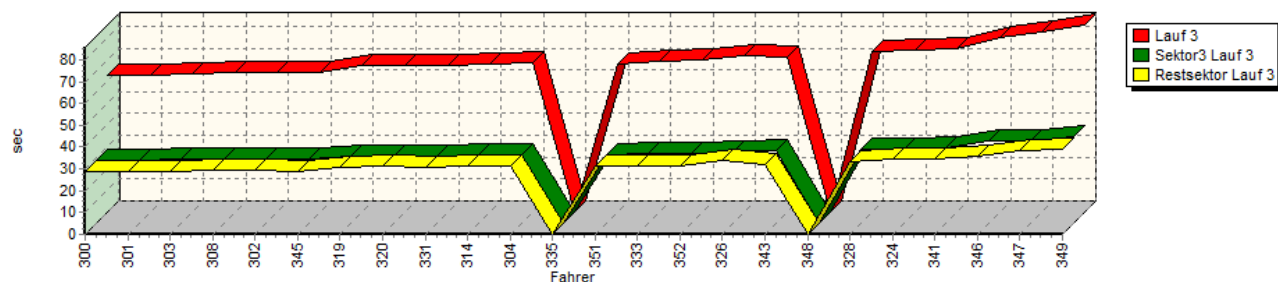
Speed-Diagramm Lauf 3



Sektor-Diagramm (Start) Lauf 3



Sektor-Diagramm (Rest) Lauf 3



| Rg. | Nr. | Sektor 1 (50m) | Sektor 2 (50-100m) | Sektor 3 | Speed Trap | Sektor 4 | Speed (Ziel) | Laufzeit | Speed (Lauf) | |
|-----|-----|-----------------------|--------------------|---------------|------------|-------------|--------------|-------------|--------------|-------------|
| 1 | 300 | WEIDINGER Jörg | | BMW 318 i STW | | | | | | |
| | | Lauf 1: | 00:03.655 | 00:01.708 | 00:28.493 | 146,49 km/h | 00:28.068 | 133,71 km/h | 01:01.924 | 118,02 km/h |
| | | Lauf 2: | 00:03.718 | 00:01.736 | 00:28.871 | 143,31 km/h | 00:28.723 | 132,45 km/h | 01:03.048 | 115,91 km/h |
| | | Lauf 3: | 00:03.692 | 00:01.717 | 00:29.014 | 146,93 km/h | 00:28.502 | 134,01 km/h | 01:02.925 | 116,14 km/h |

Sektorzeiten & Speeds - Rennen - Gruppe E1-FIA/E1-BERG/H/FS/CTC bis 2000 ccm - Klasse

| Rg. | Nr. | | Sektor 1 (50m) | Sektor 2 (50-100m) | Sektor 3 | Speed Trap | Sektor 4 | Speed (Ziel) | Laufzeit | Speed (Lauf) |
|-----|-----|--------------------------|---------------------------|--------------------|-----------|-------------|-----------|--------------|-----------|--------------|
| 2 | 301 | WIEBE André | Renault Williams Laguna | | | | | | | |
| | | Lauf 1: | 00:03.693 | 00:01.781 | 00:29.417 | 145,34 km/h | 00:29.282 | 130,78 km/h | 01:04.173 | 113,88 km/h |
| | | Lauf 2: | 00:03.811 | 00:01.776 | 00:29.191 | 145,59 km/h | 00:29.205 | 131,05 km/h | 01:03.983 | 114,22 km/h |
| | | Lauf 3: | 00:03.598 | 00:01.753 | 00:29.080 | 144,69 km/h | 00:28.591 | 130,87 km/h | 01:03.022 | 115,96 km/h |
| 3 | 303 | ELLER Hans-Peter | VW Scirocco | | | | | | | |
| | | Lauf 1: | 00:03.640 | 00:01.745 | 00:29.260 | 143,25 km/h | 00:29.081 | 130,23 km/h | 01:03.726 | 114,68 km/h |
| | | Lauf 2: | 00:03.670 | 00:01.763 | 00:29.294 | 145,24 km/h | 00:28.721 | 130,56 km/h | 01:03.448 | 115,18 km/h |
| | | Lauf 3: | 00:03.732 | 00:01.761 | 00:29.167 | 145,12 km/h | 00:28.795 | 130,03 km/h | 01:03.455 | 115,17 km/h |
| 4 | 308 | NAUMANN Peter | VW Polo 1.4 G40 | | | | | | | |
| | | Lauf 1: | 00:03.575 | 00:01.684 | 00:29.086 | 151,36 km/h | 00:29.171 | 132,66 km/h | 01:03.516 | 115,06 km/h |
| | | Lauf 2: | 00:03.667 | 00:02.032 | * | * km/h | * | * km/h | A | * km/h |
| | | Lauf 3: | 00:03.522 | 00:01.656 | 00:29.439 | 150,25 km/h | 00:29.459 | 133,81 km/h | 01:04.076 | 114,05 km/h |
| 5 | 302 | SONDERBAUER Roman | Opel Kadett C Coupé 16V | | | | | | | |
| | | Lauf 1: | 00:03.379 | 00:01.669 | 00:29.132 | 146,04 km/h | 00:29.428 | 129,09 km/h | 01:03.608 | 114,89 km/h |
| | | Lauf 2: | 00:03.436 | 00:01.704 | 00:29.397 | 144,80 km/h | 00:29.659 | 128,98 km/h | 01:04.196 | 113,84 km/h |
| | | Lauf 3: | 00:03.439 | 00:01.689 | 00:29.421 | 143,87 km/h | 00:29.610 | 128,27 km/h | 01:04.159 | 113,91 km/h |
| 6 | 345 | WIEBE Björn | Renault Williams Laguna | | | | | | | |
| | | Lauf 1: | 00:03.959 | 00:01.865 | 00:29.898 | 141,90 km/h | 00:29.009 | 127,36 km/h | 01:04.731 | 112,90 km/h |
| | | Lauf 2: | 00:03.887 | 00:01.833 | 00:29.706 | 136,24 km/h | 00:29.227 | 127,91 km/h | 01:04.653 | 113,03 km/h |
| | | Lauf 3: | 00:03.878 | 00:01.842 | 00:29.750 | 139,77 km/h | 00:28.792 | 127,98 km/h | 01:04.262 | 113,72 km/h |
| 7 | 319 | SCHÖNBORN Rainer | VW Golf I 16V | | | | | | | |
| | | Lauf 1: | 00:03.755 | 00:01.833 | 00:30.954 | 136,52 km/h | 00:30.718 | 126,42 km/h | 01:07.260 | 108,65 km/h |
| | | Lauf 2: | 00:04.711 | 00:02.854 | 00:33.355 | 134,50 km/h | 00:30.887 | 127,50 km/h | 01:11.807 | 101,77 km/h |
| | | Lauf 3: | 00:03.652 | 00:01.794 | 00:30.754 | 135,23 km/h | 00:30.861 | 127,27 km/h | 01:07.061 | 108,97 km/h |
| 8 | 320 | WIEBE Hans-Peter | Renault Williams Laguna | | | | | | | |
| | | Lauf 1: | 00:03.866 | 00:01.870 | 00:31.124 | 134,81 km/h | 00:30.266 | 125,36 km/h | 01:07.126 | 108,87 km/h |
| | | Lauf 2: | 00:03.870 | 00:01.857 | 00:31.141 | 135,38 km/h | 00:30.753 | 122,61 km/h | 01:07.621 | 108,07 km/h |
| | | Lauf 3: | 00:03.814 | 00:01.836 | 00:30.679 | 137,09 km/h | 00:31.096 | 123,43 km/h | 01:07.425 | 108,39 km/h |
| 9 | 331 | DÜMLER Christian | VW Golf II 8V | | | | | | | |
| | | Lauf 1: | 00:03.878 | 00:01.885 | 00:31.164 | 131,07 km/h | 00:30.749 | 116,27 km/h | 01:07.676 | 107,99 km/h |
| | | Lauf 2: | 00:03.767 | 00:01.883 | 00:31.584 | 131,07 km/h | 00:30.769 | 117,92 km/h | 01:08.003 | 107,47 km/h |
| | | Lauf 3: | 00:03.669 | 00:01.859 | 00:30.999 | 131,28 km/h | 00:30.663 | 118,11 km/h | 01:07.190 | 108,77 km/h |
| 10 | 314 | WEISS Werner | Ford Escort RS 1800 | | | | | | | |
| | | Lauf 1: | 00:03.444 | 00:01.804 | 00:31.692 | 134,56 km/h | 00:31.482 | 122,19 km/h | 01:08.422 | 106,81 km/h |
| | | Lauf 2: | 00:03.447 | 00:01.802 | 00:31.138 | 134,08 km/h | 00:30.973 | 122,57 km/h | 01:07.360 | 108,49 km/h |
| | | Lauf 3: | 00:03.422 | 00:01.796 | 00:31.519 | 133,27 km/h | 00:31.313 | 120,06 km/h | 01:08.050 | 107,39 km/h |
| 11 | 304 | FLIK Thomas | Renault Clio 16S Williams | | | | | | | |
| | | Lauf 1: | 00:03.734 | 00:01.860 | 00:31.322 | 136,43 km/h | 00:30.808 | 124,72 km/h | 01:07.724 | 107,91 km/h |
| | | Lauf 2: | 00:03.644 | 00:01.848 | 00:31.049 | 136,57 km/h | 00:30.913 | 124,95 km/h | 01:07.454 | 108,34 km/h |
| | | Lauf 3: | 00:03.666 | 00:01.855 | 00:31.382 | 134,73 km/h | 00:31.277 | 123,63 km/h | 01:08.180 | 107,19 km/h |
| 12 | 335 | RAUCH Michael | Opel Kadett 8V | | | | | | | |
| | | Lauf 1: | 00:03.527 | 00:01.823 | 00:31.532 | 132,05 km/h | 00:30.846 | 121,70 km/h | 01:07.728 | 107,90 km/h |
| | | Lauf 2: | 00:03.475 | 00:01.833 | 00:32.275 | 129,94 km/h | 00:32.281 | 120,26 km/h | 01:09.864 | 104,60 km/h |
| | | Lauf 3: | * | * | * | * km/h | * | * km/h | * | * km/h |
| 13 | 351 | VINKE Wilhelm | Opel Kadett B 1900 | | | | | | | |
| | | Lauf 1: | 00:03.657 | 00:01.893 | 00:31.799 | 132,01 km/h | 00:31.014 | 120,65 km/h | 01:08.363 | 106,90 km/h |
| | | Lauf 2: | 00:03.798 | 00:01.891 | 00:31.544 | 132,99 km/h | 00:31.036 | 119,39 km/h | 01:08.269 | 107,05 km/h |
| | | Lauf 3: | 00:03.631 | 00:01.871 | 00:31.560 | 132,90 km/h | 00:31.094 | 119,99 km/h | 01:08.156 | 107,23 km/h |

Sektorzeiten & Speeds - Rennen - Gruppe E1-FIA/E1-BERG/H/FS/CTC bis 2000 ccm - Klasse

| Rg. | Nr. | | Sektor 1 (50m) | Sektor 2 (50-100m) | Sektor 3 | Speed Trap | Sektor 4 | Speed (Ziel) | Laufzeit | Speed (Lauf) |
|-----|-----|-----------------------------|-------------------------|--------------------|-----------|-------------|-----------|--------------|-----------|--------------|
| 14 | 333 | HATEZIC Johann | Opel Ascona B 8V | | | | | | | |
| | | Lauf 1: | 00:03.712 | 00:01.894 | 00:31.864 | 129,23 km/h | 00:31.370 | 115,45 km/h | 01:08.840 | 106,16 km/h |
| | | Lauf 2: | 00:03.778 | 00:01.893 | 00:32.228 | 122,91 km/h | 00:31.725 | 117,03 km/h | 01:09.624 | 104,96 km/h |
| | | Lauf 3: | 00:03.599 | 00:01.881 | 00:32.083 | 124,42 km/h | 00:31.598 | 121,05 km/h | 01:09.161 | 105,67 km/h |
| 15 | 352 | SCHOLZ Stefan | Opel Kadett C Coupé GTE | | | | | | | |
| | | Lauf 1: | 00:03.653 | 00:01.932 | 00:33.378 | 123,59 km/h | 00:32.038 | 116,26 km/h | 01:11.001 | 102,93 km/h |
| | | Lauf 2: | 00:03.553 | 00:01.913 | 00:32.441 | 127,52 km/h | 00:32.021 | 115,66 km/h | 01:09.928 | 104,51 km/h |
| | | Lauf 3: | 00:03.730 | 00:01.930 | 00:32.231 | 126,77 km/h | 00:31.625 | 118,07 km/h | 01:09.516 | 105,13 km/h |
| 16 | 326 | LADAGE Uwe | BMW 320 WTCC | | | | | | | |
| | | Lauf 1: | 00:03.561 | 00:01.860 | 00:33.342 | 126,45 km/h | 00:33.043 | 116,42 km/h | 01:11.806 | 101,77 km/h |
| | | Lauf 2: | 00:03.502 | 00:01.840 | 00:31.913 | 127,84 km/h | 00:32.749 | 116,84 km/h | 01:10.004 | 104,39 km/h |
| | | Lauf 3: | 00:03.480 | 00:01.837 | 00:32.566 | 128,36 km/h | 00:33.608 | 113,00 km/h | 01:11.491 | 102,22 km/h |
| 17 | 343 | RATH Fabien Marcel | Opel Kadett C GT/E | | | | | | | |
| | | Lauf 1: | 00:04.043 | 00:02.180 | 00:33.514 | 126,69 km/h | 00:32.207 | 116,56 km/h | 01:11.944 | 101,58 km/h |
| | | Lauf 2: | 00:04.066 | 00:02.201 | 00:33.609 | 124,71 km/h | 00:32.335 | 114,30 km/h | 01:12.211 | 101,20 km/h |
| | | Lauf 3: | 00:04.098 | 00:02.132 | 00:33.090 | 124,14 km/h | 00:31.906 | 115,18 km/h | 01:11.226 | 102,60 km/h |
| 18 | 348 | DE WEST Wilko | Opel Kadett C Coupé | | | | | | | |
| | | Lauf 1: | 00:03.628 | 00:01.972 | 00:33.443 | 124,19 km/h | 00:33.253 | 110,31 km/h | 01:12.296 | 101,09 km/h |
| | | Lauf 2: | 00:03.720 | 00:01.990 | * | * km/h | * | * km/h | A | * km/h |
| | | Lauf 3: | * | * | * | * km/h | * | * km/h | * | * km/h |
| 19 | 328 | ALT Holger | Ford Escort RS 2000 16V | | | | | | | |
| | | Lauf 1: | 00:03.903 | 00:02.059 | 00:34.112 | 122,77 km/h | 00:33.977 | 111,24 km/h | 01:14.051 | 98,69 km/h |
| | | Lauf 2: | 00:03.841 | 00:02.051 | 00:34.125 | 122,23 km/h | 00:33.308 | 111,21 km/h | 01:13.325 | 99,67 km/h |
| | | Lauf 3: | 00:03.818 | 00:02.056 | 00:34.111 | 122,89 km/h | 00:33.301 | 112,52 km/h | 01:13.286 | 99,72 km/h |
| 20 | 324 | SCHWANECKE Gero | VW Golf I GTI 16V | | | | | | | |
| | | Lauf 1: | 00:03.718 | 00:01.989 | 00:33.980 | 123,90 km/h | 00:33.619 | 113,84 km/h | 01:13.306 | 99,69 km/h |
| | | Lauf 2: | 00:03.681 | 00:02.012 | 00:34.195 | 121,32 km/h | 00:34.290 | 112,21 km/h | 01:14.178 | 98,52 km/h |
| | | Lauf 3: | 00:03.665 | 00:01.977 | 00:34.153 | 122,84 km/h | 00:34.344 | 115,35 km/h | 01:14.139 | 98,57 km/h |
| 21 | 341 | RUWE Mario | BMW 318 is | | | | | | | |
| | | Lauf 1: | 00:03.833 | 00:02.101 | 00:35.447 | 116,43 km/h | 00:34.879 | 105,62 km/h | 01:16.260 | 95,83 km/h |
| | | Lauf 2: | 00:03.804 | 00:02.103 | 00:34.569 | 117,01 km/h | 00:34.449 | 101,81 km/h | 01:14.925 | 97,54 km/h |
| | | Lauf 3: | 00:03.840 | 00:02.134 | 00:34.628 | 116,35 km/h | 00:34.433 | 107,99 km/h | 01:15.035 | 97,39 km/h |
| 22 | 346 | WECKENBROCK Heiko | BMW 318 ti Compact | | | | | | | |
| | | Lauf 1: | 00:04.282 | 00:02.432 | 00:38.219 | 103,95 km/h | 00:35.734 | 100,14 km/h | 01:20.667 | 90,59 km/h |
| | | Lauf 2: | 00:04.091 | 00:02.372 | 00:37.437 | 105,33 km/h | 00:35.750 | 99,58 km/h | 01:19.650 | 91,75 km/h |
| | | Lauf 3: | 00:04.274 | 00:02.442 | 00:37.506 | 104,18 km/h | 00:35.815 | 101,04 km/h | 01:20.037 | 91,31 km/h |
| 23 | 347 | HUBER Ivana | Renault Clio Williams | | | | | | | |
| | | Lauf 1: | 00:04.303 | 00:02.241 | 00:42.196 | 101,66 km/h | 00:41.293 | 100,12 km/h | 01:30.033 | 81,17 km/h |
| | | Lauf 2: | 00:04.135 | 00:02.256 | 00:38.422 | 110,75 km/h | 00:38.843 | 101,24 km/h | 01:23.656 | 87,36 km/h |
| | | Lauf 3: | 00:04.403 | 00:02.281 | 00:37.631 | 112,83 km/h | 00:38.169 | 105,47 km/h | 01:22.484 | 88,60 km/h |
| 24 | 349 | WALDBACH Hans-Alfred | Peugeot 306 S16 | | | | | | | |
| | | Lauf 1: | 00:04.073 | 00:02.274 | 00:40.286 | 101,74 km/h | 00:39.033 | 91,43 km/h | 01:25.666 | 85,31 km/h |
| | | Lauf 2: | 00:04.060 | 00:02.295 | 00:39.321 | 104,75 km/h | 00:38.915 | 93,97 km/h | 01:24.591 | 86,39 km/h |
| | | Lauf 3: | 00:04.042 | 00:02.456 | 00:39.919 | 101,10 km/h | 00:39.338 | 93,99 km/h | 01:25.755 | 85,22 km/h |