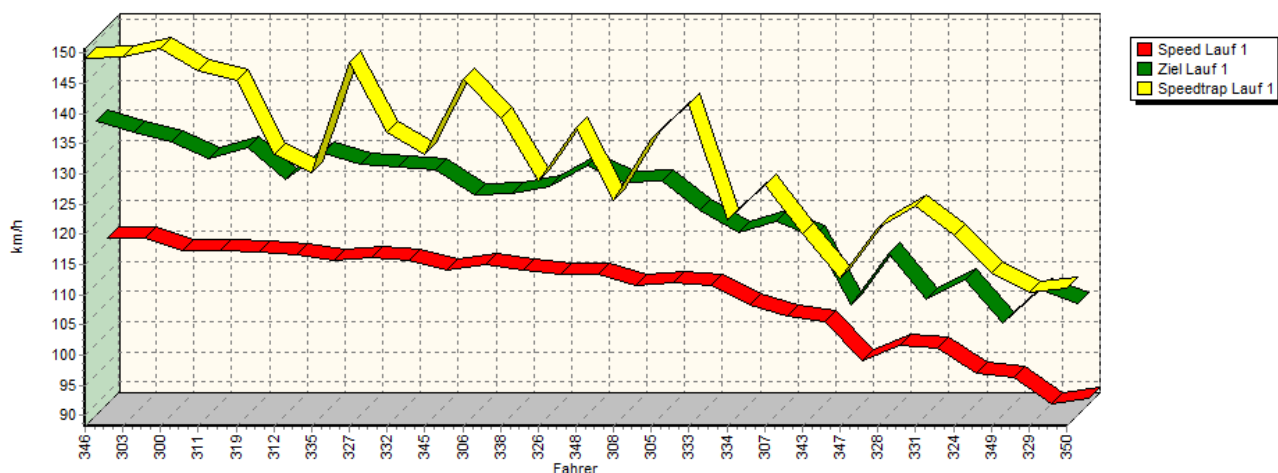
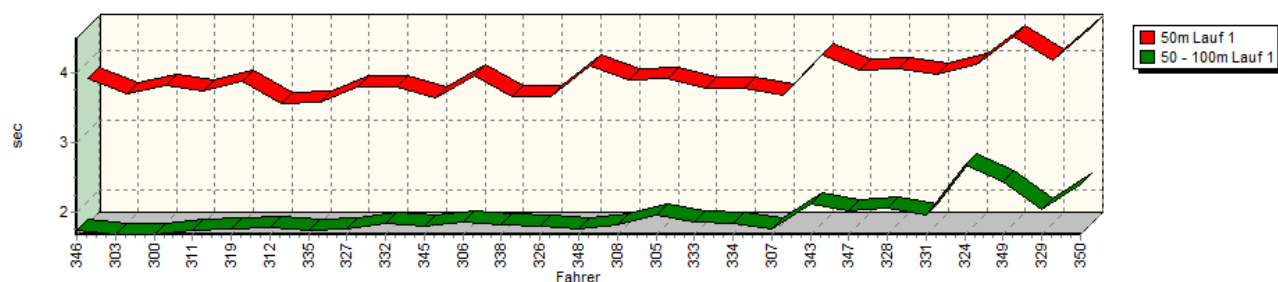


Sektorzeiten & Speeds - Rennen - Gruppe E1-FIA/E1-BERG/E1-ACL/H/FS bis 2000 ccm - Kla

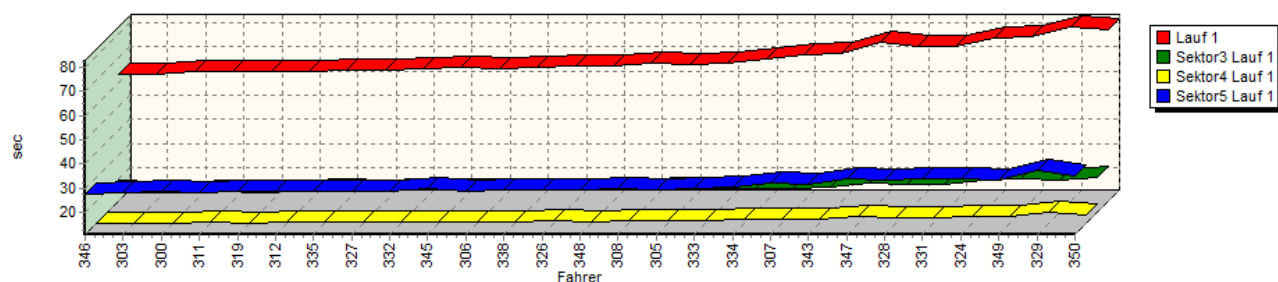
Speed-Diagramm Lauf 1



Sektor-Diagramm (Start) Lauf 1

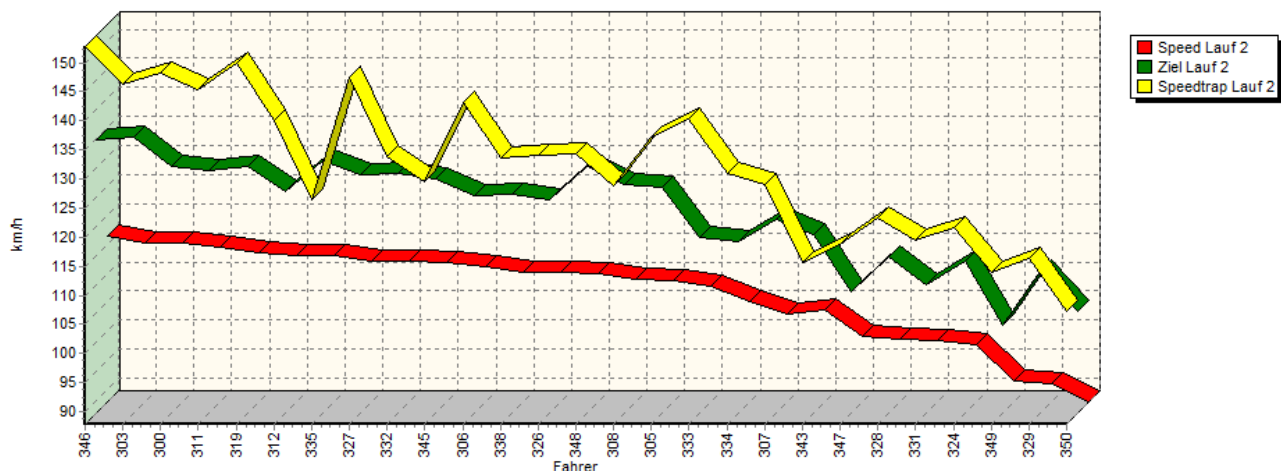


Sektor-Diagramm (Rest) Lauf 1

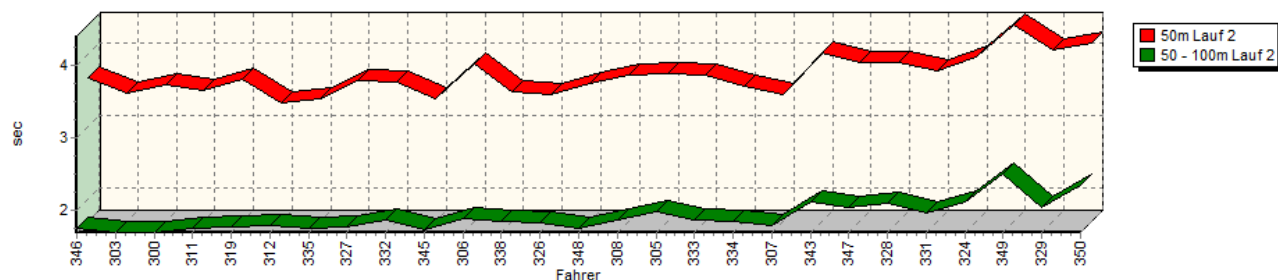


Sektorzeiten & Speeds - Rennen - Gruppe E1-FIA/E1-BERG/E1-ACL/H/FS bis 2000 ccm - Klasse

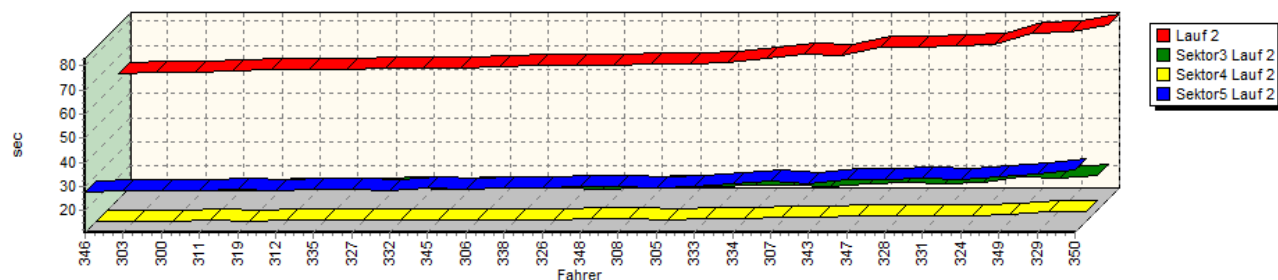
Speed-Diagramm Lauf 2



Sektor-Diagramm (Start) Lauf 2

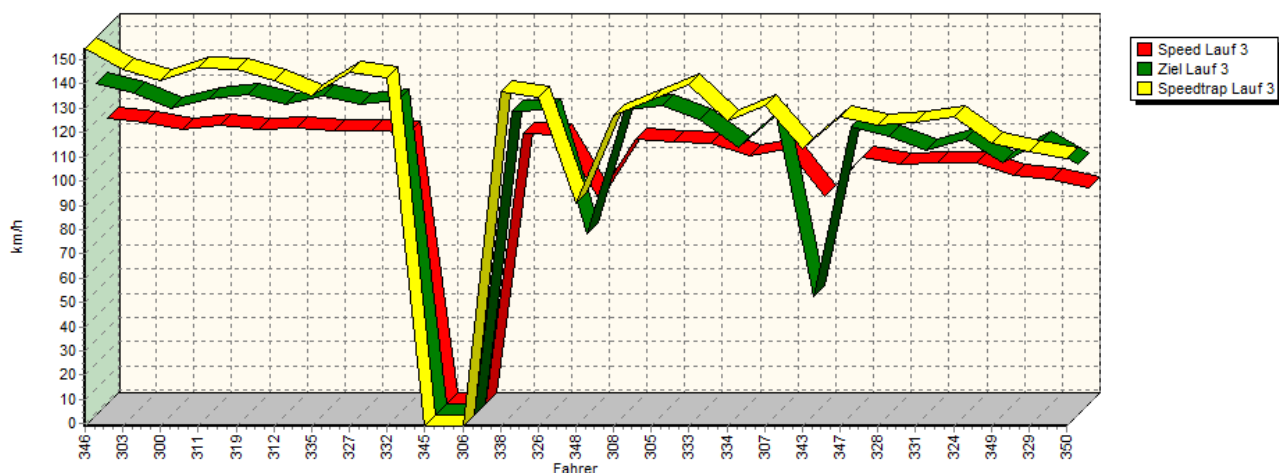


Sektor-Diagramm (Rest) Lauf 2

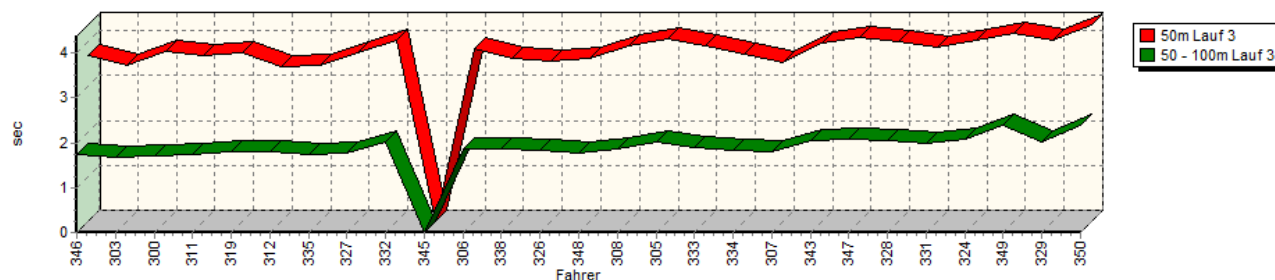


Sektorzeiten & Speeds - Rennen - Gruppe E1-FIA/E1-BERG/E1-ACL/H/FS bis 2000 ccm - Klasse

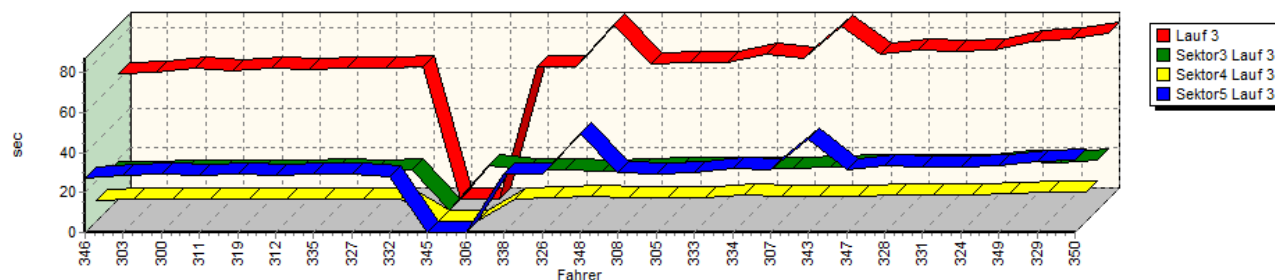
Speed-Diagramm Lauf 3



Sektor-Diagramm (Start) Lauf 3



Sektor-Diagramm (Rest) Lauf 3



Rg.	Nr.	Sektor 1	Sektor 2	Sektor 3	Sektor 4	Speed Trap	Sektor 5	Speed (Ziel)	Laufzeit	Speed (Lauf)	
1	346	WIEBE André Renault Williams Wiebe Laguna									
		Lauf 1:	00:03.760	00:01.745	00:19.258	00:10.878	149,08 km/h	00:27.546	136,91 km/h	01:03.187	115,66 km/h
		Lauf 2:	00:03.670	00:01.751	00:18.957	00:10.779	152,77 km/h	00:27.591	134,90 km/h	01:02.748	116,47 km/h
		Lauf 3:	00:03.698	00:01.744	00:18.874	00:10.634	154,64 km/h	00:27.507	135,85 km/h	01:02.457	117,01 km/h

Sektorzeiten & Speeds - Rennen - Gruppe E1-FIA/E1-BERG/E1-ACL/H/FS bis 2000 ccm - Kla

Rg.	Nr.	Sektor 1	Sektor 2	Sektor 3	Sektor 4	Speed Trap	Sektor 5	Speed (Ziel)	Laufzeit	Speed (Lauf)
2	303	SONDERBAUER Roman		Opel Kadett C Coupé						
		Lauf 1:	00:03.542	00:01.688	00:18.850	00:10.884	149,28 km/h	00:28.145	135,11 km/h	01:03.109 115,80 km/h
		Lauf 2:	00:03.457	00:01.684	00:18.788	00:11.042	146,42 km/h	00:28.430	135,23 km/h	01:03.401 115,27 km/h
		Lauf 3:	00:03.466	00:01.688	00:18.943	00:11.164	146,27 km/h	00:28.430	131,82 km/h	01:03.691 114,74 km/h
3	300	ROTTENBERGER Dieter		BMW 318i E36 STW						
		Lauf 1:	00:03.676	00:01.690	00:19.005	00:10.902	150,77 km/h	00:28.984	133,55 km/h	01:04.257 113,73 km/h
		Lauf 2:	00:03.576	00:01.686	00:18.910	00:10.879	148,33 km/h	00:28.387	130,27 km/h	01:03.438 115,20 km/h
		Lauf 3:	00:03.793	00:01.712	00:19.335	00:11.430	141,49 km/h	00:28.935	125,39 km/h	01:05.205 112,08 km/h
4	311	ORTH Patrick		BMW E30 320is						
		Lauf 1:	00:03.587	00:01.753	00:19.639	00:11.264	147,01 km/h	00:28.055	130,78 km/h	01:04.298 113,66 km/h
		Lauf 2:	00:03.506	00:01.736	00:19.127	00:11.192	145,27 km/h	00:28.265	129,44 km/h	01:03.826 114,50 km/h
		Lauf 3:	00:03.698	00:01.749	00:19.213	00:11.152	146,38 km/h	00:28.288	129,55 km/h	01:04.100 114,01 km/h
5	319	SCHÖNBORN Reiner		VW Golf I 16V						
		Lauf 1:	00:03.722	00:01.762	00:19.086	00:11.069	145,35 km/h	00:28.863	132,52 km/h	01:04.502 113,30 km/h
		Lauf 2:	00:03.659	00:01.761	00:19.124	00:11.015	149,93 km/h	00:28.856	130,16 km/h	01:04.415 113,45 km/h
		Lauf 3:	00:03.750	00:01.792	00:19.261	00:11.381	146,27 km/h	00:29.005	130,96 km/h	01:05.189 112,10 km/h
6	312	WIMMER Norbert		BMW 2002 8V						
		Lauf 1:	00:03.403	00:01.779	00:19.493	00:11.424	133,21 km/h	00:28.573	127,32 km/h	01:04.672 113,00 km/h
		Lauf 2:	00:03.330	00:01.781	00:19.738	00:11.383	140,03 km/h	00:28.404	126,00 km/h	01:04.636 113,06 km/h
		Lauf 3:	00:03.439	00:01.786	00:19.701	00:11.273	141,44 km/h	00:28.705	127,20 km/h	01:04.904 112,60 km/h
7	335	RAUCH Michael		Opel Briegel Kadett C 8V						
		Lauf 1:	00:03.422	00:01.758	00:19.873	00:11.374	130,27 km/h	00:28.816	131,62 km/h	01:05.243 112,01 km/h
		Lauf 2:	00:03.382	00:01.743	00:19.574	00:11.393	126,37 km/h	00:28.610	131,20 km/h	01:04.702 112,95 km/h
		Lauf 3:	00:03.474	00:01.752	00:19.900	00:11.395	135,12 km/h	00:29.084	130,32 km/h	01:05.605 111,39 km/h
8	327	BRÜGGE Frank		VW Brügge Golf GTI 16V						
		Lauf 1:	00:03.655	00:01.771	00:19.730	00:11.302	148,43 km/h	00:28.478	129,86 km/h	01:04.936 112,54 km/h
		Lauf 2:	00:03.648	00:01.770	00:19.614	00:11.239	147,50 km/h	00:28.952	128,78 km/h	01:05.223 112,05 km/h
		Lauf 3:	00:03.769	00:01.782	00:19.542	00:11.286	145,12 km/h	00:29.105	127,12 km/h	01:05.484 111,60 km/h
9	332	ELLER- Hans-Peter		Opel Kadett C Coupé						
		Lauf 1:	00:03.656	00:01.857	00:19.818	00:11.325	136,95 km/h	00:28.646	129,25 km/h	01:05.302 111,91 km/h
		Lauf 2:	00:03.628	00:01.851	00:19.802	00:11.549	133,85 km/h	00:28.407	128,99 km/h	01:05.237 112,02 km/h
		Lauf 3:	00:04.029	00:02.008	00:20.370	00:11.220	142,42 km/h	00:28.201	128,57 km/h	01:05.828 111,02 km/h
10	345	KOKOR Andreas		Ford Escort RS 2000 MK I						
		Lauf 1:	00:03.490	00:01.806	00:19.927	00:11.336	133,17 km/h	00:29.639	128,94 km/h	01:06.198 110,40 km/h
		Lauf 2:	00:03.387	00:01.715	00:19.539	00:11.437	129,50 km/h	00:29.229	128,02 km/h	01:05.307 111,90 km/h
		Lauf 3:	*	*	*	*	* km/h	*	* km/h	* km/h
11	306	DÜMLER Christian		VW Golf II 8V						
		Lauf 1:	00:03.811	00:01.867	00:19.979	00:11.414	145,72 km/h	00:28.539	124,81 km/h	01:05.610 111,38 km/h
		Lauf 2:	00:03.880	00:01.874	00:19.840	00:11.445	143,24 km/h	00:28.718	125,22 km/h	01:05.757 111,14 km/h
		Lauf 3:	00:03.862	00:01.854	00:22.007	*	* km/h	*	* km/h	A * km/h
12	338	GLASS Stefan		Ford Escort Lotus TC						
		Lauf 1:	00:03.515	00:01.832	00:20.082	00:11.487	139,21 km/h	00:29.326	124,94 km/h	01:06.242 110,32 km/h
		Lauf 2:	00:03.487	00:01.830	00:20.173	00:11.592	133,69 km/h	00:29.219	125,39 km/h	01:06.301 110,22 km/h
		Lauf 3:	00:03.633	00:01.848	00:19.862	00:11.372	137,06 km/h	00:29.372	124,23 km/h	01:06.087 110,58 km/h
13	326	WEBER Jens		Opel Kadett C 16V						
		Lauf 1:	00:03.501	00:01.809	00:19.845	00:11.916	128,88 km/h	00:29.570	126,03 km/h	01:06.641 109,66 km/h
		Lauf 2:	00:03.439	00:01.814	00:19.987	00:11.568	134,05 km/h	00:29.559	124,58 km/h	01:06.367 110,11 km/h
		Lauf 3:	00:03.585	00:01.818	00:19.946	00:11.655	134,52 km/h	00:29.450	125,04 km/h	01:06.454 109,97 km/h

Sektorzeiten & Speeds - Rennen - Gruppe E1-FIA/E1-BERG/E1-ACL/H/FS bis 2000 ccm - Kla

Rg.	Nr.		Sektor 1	Sektor 2	Sektor 3	Sektor 4	Speed Trap	Sektor 5	Speed (Ziel)	Laufzeit	Speed (Lauf)
14	348	FRANK René	BMW 320i STW								
		Lauf 1:	00:03.954	00:01.765	00:19.818	00:11.694	137,56 km/h	00:29.422	129,51 km/h	01:06.653	109,64 km/h
		Lauf 2:	00:03.597	00:01.746	00:19.756	00:11.676	134,38 km/h	00:29.687	130,18 km/h	01:06.462	109,96 km/h
		Lauf 3:	00:03.632	00:01.756	00:19.666	00:12.493	90,85 km/h	00:49.501	73,81 km/h	01:27.048	83,95 km/h
15	308	FLIK Beatrice	Renault Megane Cup								
		Lauf 1:	00:03.758	00:01.838	00:20.189	00:12.007	125,57 km/h	00:29.907	126,84 km/h	01:07.699	107,95 km/h
		Lauf 2:	00:03.721	00:01.851	00:19.922	00:11.910	128,82 km/h	00:29.681	127,21 km/h	01:07.085	108,94 km/h
		Lauf 3:	00:03.899	00:01.869	00:19.966	00:12.011	126,96 km/h	00:29.896	124,60 km/h	01:07.641	108,04 km/h
16	305	SCHUSTER Jürgen	Mazda RX-7								
		Lauf 1:	00:03.770	00:01.966	00:20.671	00:11.946	135,83 km/h	00:29.098	126,93 km/h	01:07.451	108,35 km/h
		Lauf 2:	00:03.734	00:01.971	00:20.516	00:11.604	137,31 km/h	00:29.359	126,61 km/h	01:07.184	108,78 km/h
		Lauf 3:	00:04.062	00:02.023	00:20.824	00:11.831	133,40 km/h	00:29.515	126,32 km/h	01:08.255	107,07 km/h
17	333	HATEZIC Johann	Opel Frank Ascona B 8V								
		Lauf 1:	00:03.634	00:01.875	00:20.776	00:11.751	141,48 km/h	00:29.733	122,13 km/h	01:07.769	107,84 km/h
		Lauf 2:	00:03.725	00:01.855	00:20.434	00:12.029	140,34 km/h	00:29.718	118,00 km/h	01:07.761	107,85 km/h
		Lauf 3:	00:03.901	00:01.895	00:20.718	00:12.001	139,72 km/h	00:30.008	120,64 km/h	01:08.523	106,65 km/h
18	334	LANG Bernhard	Ford Escort RS2000 Spezial Frai								
		Lauf 1:	00:03.634	00:01.858	00:20.818	00:12.791	122,35 km/h	00:30.703	118,58 km/h	01:09.804	104,69 km/h
		Lauf 2:	00:03.566	00:01.834	00:21.174	00:12.128	131,02 km/h	00:30.854	117,25 km/h	01:09.556	105,07 km/h
		Lauf 3:	00:03.724	00:01.846	00:21.148	00:13.546	124,69 km/h	00:32.107	109,54 km/h	01:12.371	100,98 km/h
19	307	LADAGE Uwe	BMW 320 WTTC								
		Lauf 1:	00:03.528	00:01.776	00:20.926	00:12.653	128,09 km/h	00:32.289	120,37 km/h	01:11.172	102,68 km/h
		Lauf 2:	00:03.438	00:01.773	00:20.993	00:12.694	129,00 km/h	00:32.162	121,08 km/h	01:11.060	102,84 km/h
		Lauf 3:	00:03.528	00:01.791	00:20.626	00:12.786	131,13 km/h	00:31.642	122,30 km/h	01:10.373	103,85 km/h
20	343	RATH Fabien Marcel	Opel Kadett C GT/E								
		Lauf 1:	00:04.105	00:02.135	00:21.459	00:12.394	120,19 km/h	00:31.582	117,87 km/h	01:11.675	101,96 km/h
		Lauf 2:	00:04.018	00:02.119	00:20.857	00:12.398	115,52 km/h	00:31.071	118,46 km/h	01:10.463	103,71 km/h
		Lauf 3:	00:03.972	00:02.046	00:21.424	00:12.484	113,31 km/h	00:46.534	47,65 km/h	01:26.460	84,53 km/h
21	347	DE WEST Wilko	Opel Kadett C Coupé								
		Lauf 1:	00:03.894	00:02.027	00:22.857	00:14.010	112,76 km/h	00:33.733	106,38 km/h	01:16.521	95,50 km/h
		Lauf 2:	00:03.883	00:02.040	00:22.056	00:12.929	118,86 km/h	00:32.863	108,80 km/h	01:13.771	99,06 km/h
		Lauf 3:	00:04.115	00:02.076	00:22.013	00:12.606	126,41 km/h	00:31.594	117,66 km/h	01:12.404	100,93 km/h
22	328	ALT Holger	Ford Escort RS2000 16V								
		Lauf 1:	00:03.911	00:02.070	00:22.234	00:13.190	121,09 km/h	00:33.299	114,90 km/h	01:14.704	97,83 km/h
		Lauf 2:	00:03.900	00:02.091	00:22.208	00:13.048	123,36 km/h	00:32.841	114,79 km/h	01:14.088	98,64 km/h
		Lauf 3:	00:03.997	00:02.056	00:21.967	00:13.156	123,33 km/h	00:33.614	113,68 km/h	01:14.790	97,71 km/h
23	331	SCHUG Martin	VW Golf II 16V								
		Lauf 1:	00:03.823	00:01.973	00:22.251	00:13.065	124,66 km/h	00:33.881	107,47 km/h	01:14.993	97,45 km/h
		Lauf 2:	00:03.770	00:01.956	00:21.919	00:13.067	119,47 km/h	00:33.496	109,85 km/h	01:14.208	98,48 km/h
		Lauf 3:	00:03.876	00:01.982	00:22.086	00:13.163	124,09 km/h	00:33.012	107,92 km/h	01:14.119	98,60 km/h
24	324	SCHWANECKE Gero	VW Golf I GTI Escher 16V								
		Lauf 1:	00:03.977	00:02.686	00:23.958	00:13.564	119,94 km/h	00:34.023	110,71 km/h	01:18.208	93,44 km/h
		Lauf 2:	00:03.975	00:02.103	00:22.576	00:13.318	121,68 km/h	00:32.819	113,88 km/h	01:14.791	97,71 km/h
		Lauf 3:	00:04.042	00:02.096	00:22.448	00:13.026	126,45 km/h	00:32.876	112,73 km/h	01:14.488	98,11 km/h
25	349	WECKENBROCK Heiko	BMW 318 ti Compact								
		Lauf 1:	00:04.379	00:02.453	00:24.541	00:13.865	113,72 km/h	00:33.600	103,53 km/h	01:18.838	92,70 km/h
		Lauf 2:	00:04.415	00:02.496	00:24.945	00:13.849	113,92 km/h	00:34.233	102,96 km/h	01:19.938	91,42 km/h
		Lauf 3:	00:04.192	00:02.381	00:24.540	00:13.733	115,38 km/h	00:33.774	102,71 km/h	01:18.620	92,95 km/h

Sektorzeiten & Speeds - Rennen - Gruppe E1-FIA/E1-BERG/E1-ACL/H/FS bis 2000 ccm - Kla

Rg.	Nr.		Sektor 1	Sektor 2	Sektor 3	Sektor 4	Speed Trap	Sektor 5	Speed (Ziel)	Laufzeit	Speed (Lauf)
26	329	HIRTE Michael	Renault Clio RS Cup								
		Lauf 1:	00:04.021	00:02.054	00:24.278	00:15.279	110,49 km/h	00:37.175	108,90 km/h	01:22.807	88,25 km/h
		Lauf 2:	00:04.063	00:02.034	00:23.842	00:14.957	116,32 km/h	00:35.380	112,31 km/h	01:20.276	91,04 km/h
		Lauf 3:	00:04.025	00:02.024	00:23.348	00:14.805	112,34 km/h	00:35.760	111,75 km/h	01:19.962	91,39 km/h
27	350	MODERSITZKI Andreas	Ford RS 2000								
		Lauf 1:	00:04.510	00:02.403	00:25.481	00:14.333	111,18 km/h	00:35.153	106,81 km/h	01:21.880	89,25 km/h
		Lauf 2:	00:04.171	00:02.343	00:25.238	00:14.786	107,20 km/h	00:36.646	105,40 km/h	01:23.184	87,85 km/h
		Lauf 3:	00:04.379	00:02.402	00:25.144	00:14.595	109,37 km/h	00:36.533	102,66 km/h	01:23.053	87,99 km/h