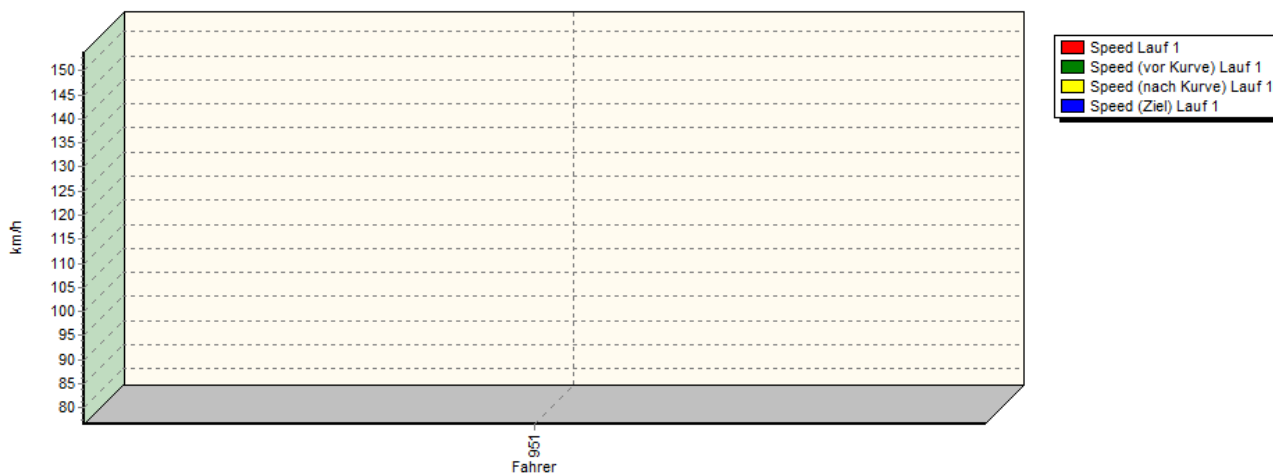
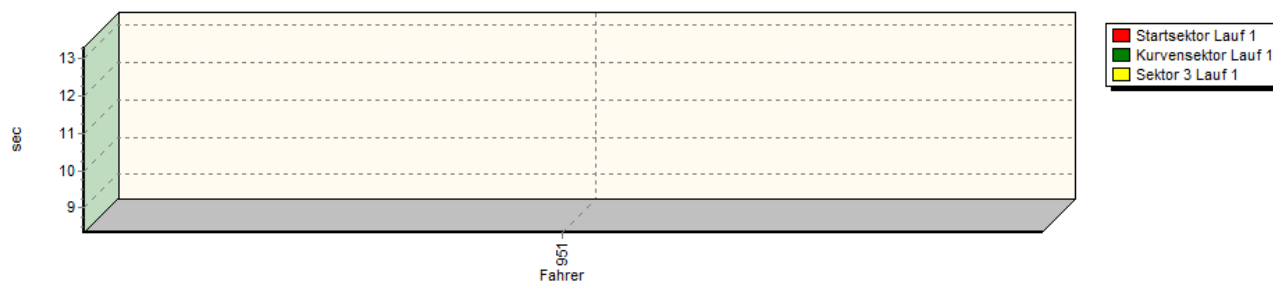


## Sektorzeiten & Speeds - GLP Klassen 36 und 37

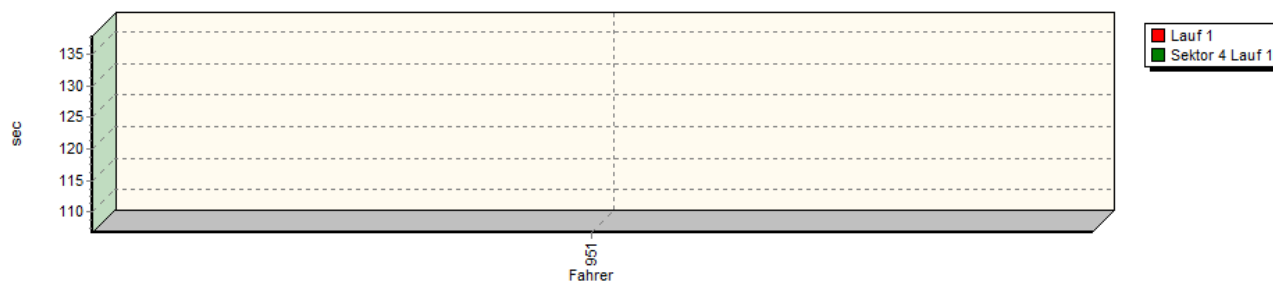
Speed-Diagramm Lauf 1



Sektor-Diagramm (Start) Lauf 1

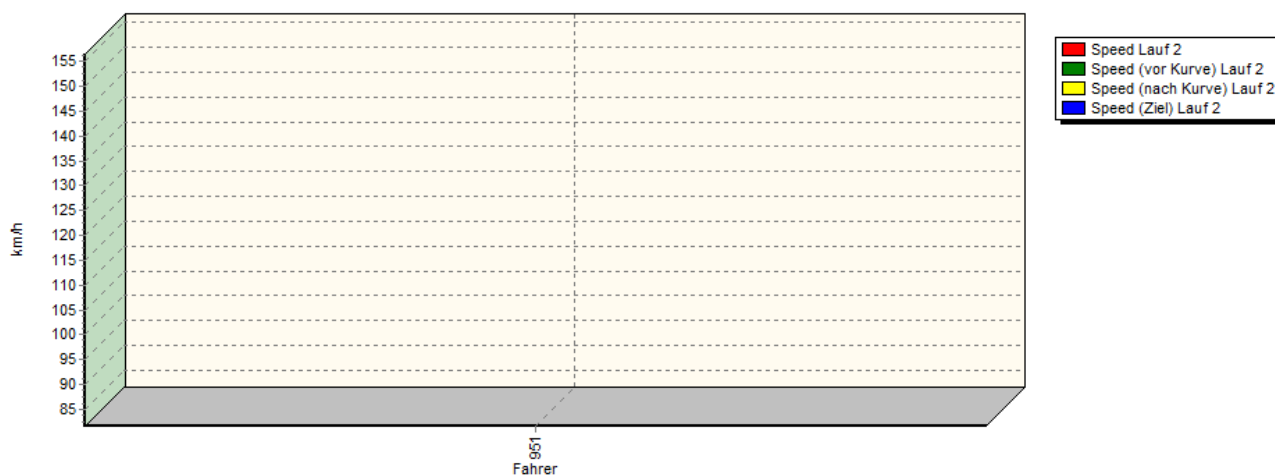


Sektor-Diagramm (Rest) Lauf 1

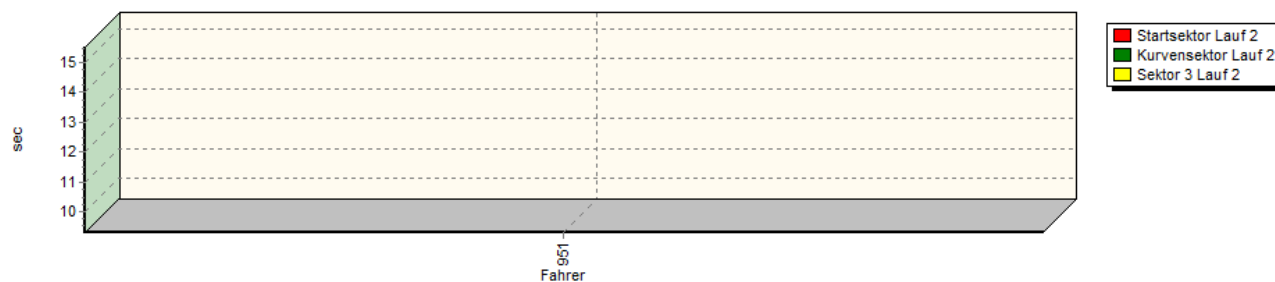


## Sektorzeiten & Speeds - GLP Klassen 36 und 37

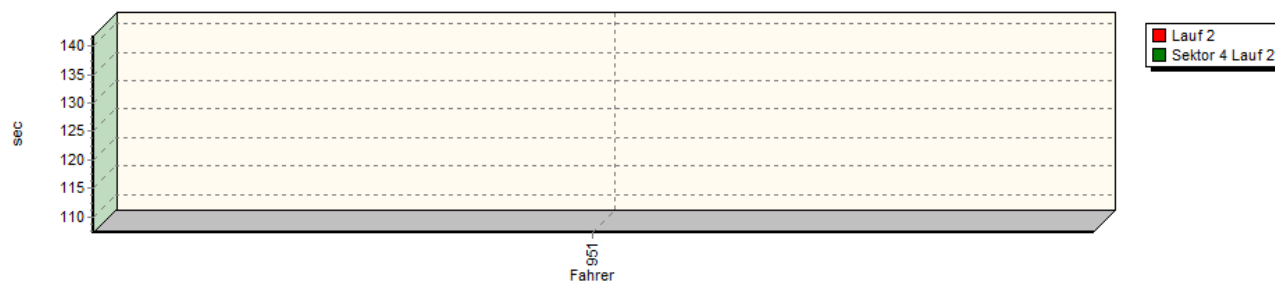
Speed-Diagramm Lauf 2



Sektor-Diagramm (Start) Lauf 2



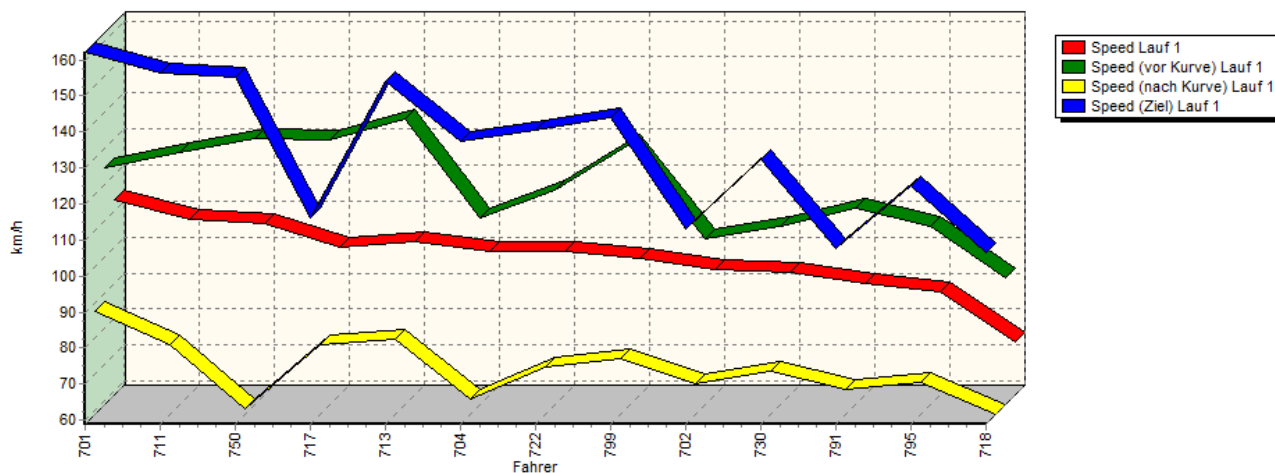
Sektor-Diagramm (Rest) Lauf 2



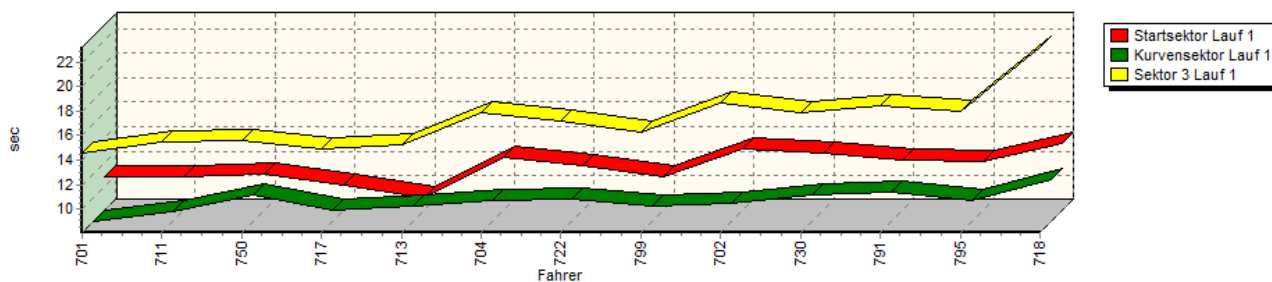
Rg.	Nr.	Startsek.	Speed vor Kurve	90°-Kurve	Speed n. K.	Sektor 3	Sektor 4	Speed Ziel	Laufzeit	Speed (Lauf)	
1	951	<b>HARTMANN Florian</b>	Reynard Opel Lotus								
		Lauf 1:	08.349	145,05 km/h	09.433	76,61 km/h	13.296	01:46.781	153,85 km/h	02:17.859	109,68 km/h
		Lauf 2:	09.746	128,22 km/h	09.315	81,58 km/h	15.513	01:47.184	156,52 km/h	02:21.758	106,66 km/h

## Sektorzeiten & Speeds - GLP Klassen 36 und 37

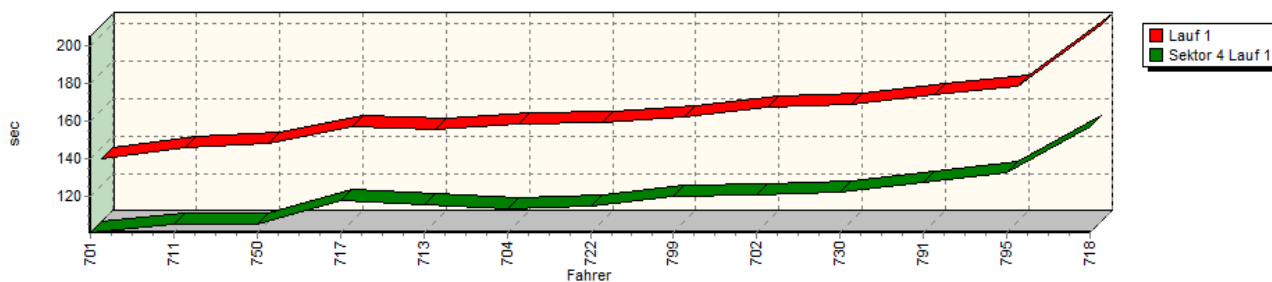
Speed-Diagramm Lauf 1



Sektor-Diagramm (Start) Lauf 1

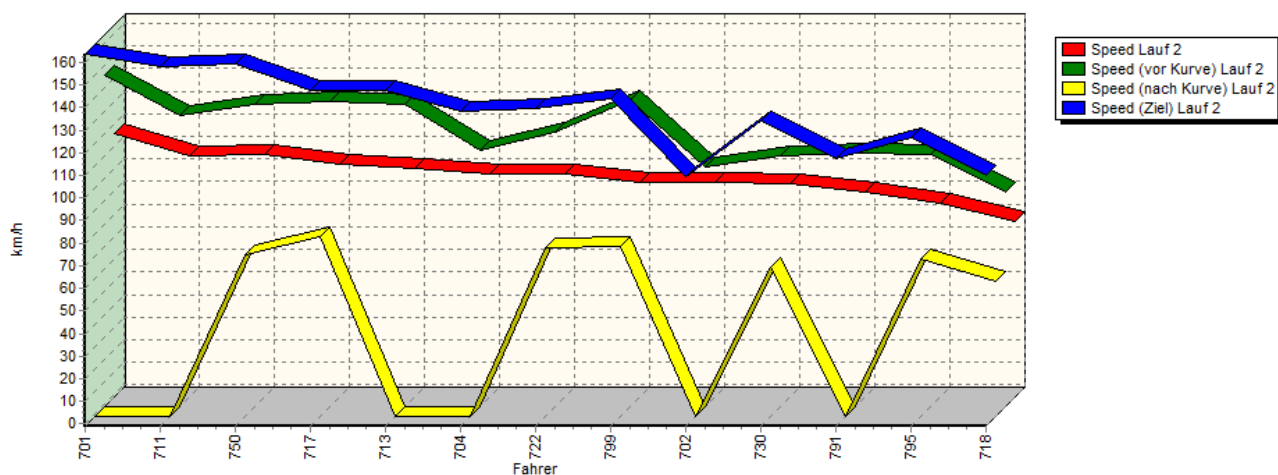


Sektor-Diagramm (Rest) Lauf 1

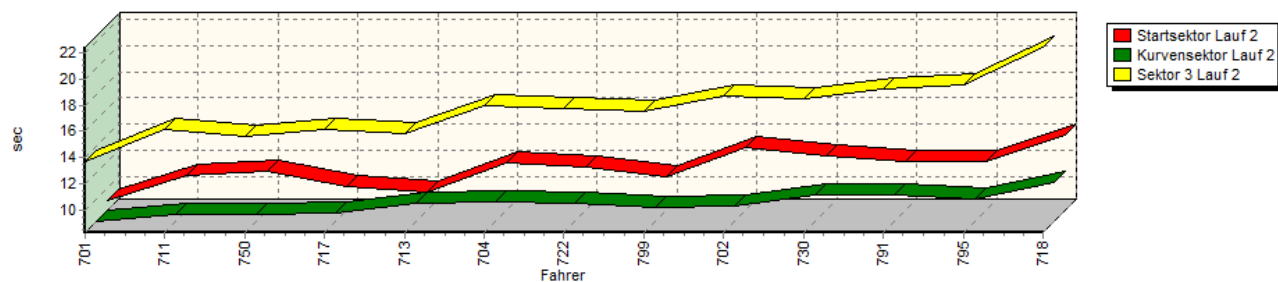


## Sektorzeiten &amp; Speeds - GLP Klassen 36 und 37

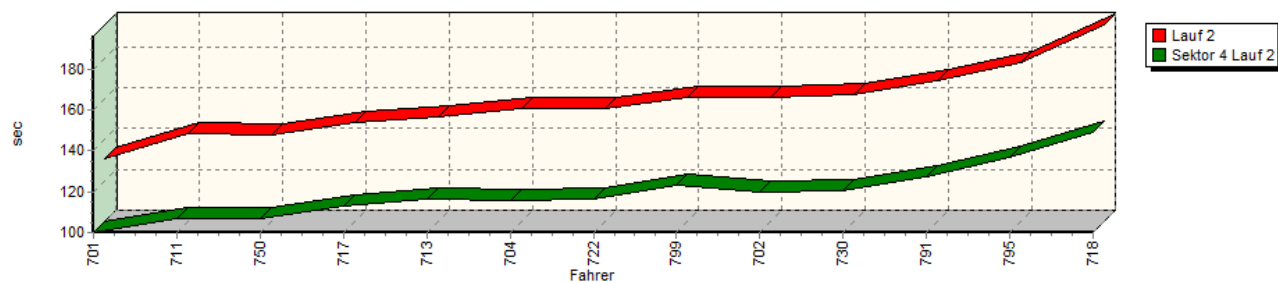
Speed-Diagramm Lauf 2



Sektor-Diagramm (Start) Lauf 2



Sektor-Diagramm (Rest) Lauf 2



Rg.	Nr.	Startsek.	Speed vor Kurve	90°-Kurve	Speed n. K.	Sektor 3	Sektor 4	Speed Ziel	Laufzeit	Speed (Lauf)	
1	701	<b>HILGER Franz</b>		Chevron B38							
		Lauf 1:	10.819	124,71 km/h	08.088	87,57 km/h	14.533	01:40.429	162,16 km/h	02:13.869	112,95 km/h
		Lauf 2:	09.071	145,82 km/h	08.299	* km/h	13.757	01:39.811	163,64 km/h	02:10.938	115,47 km/h

## Sektorzeiten &amp; Speeds - GLP Klassen 36 und 37

Rg.	Nr.	Startsek.	Speed vor Kurve	90°-Kurve	Speed n. K.	Sektor 3	Sektor 4	Speed Ziel	Laufzeit	Speed (Lauf)	
2	711	<b>HOOR Günter</b>	Porsche 944 S2								
		Lauf 1:	10.816	129,00 km/h	08.861	78,27 km/h	15.519	01:45.069	156,52 km/h	02:20.265	107,80 km/h
		Lauf 2:	10.943	128,11 km/h	08.834	* km/h	16.105	01:46.939	157,89 km/h	02:22.821	105,87 km/h
3	750	<b>LEWITZKI Stephan</b>	Ginetta G20 GTC								
		Lauf 1:	11.038	132,84 km/h	10.194	60,29 km/h	15.536	01:45.173	155,17 km/h	02:21.941	106,52 km/h
		Lauf 2:	11.271	132,93 km/h	08.861	70,57 km/h	15.652	01:46.682	159,29 km/h	02:22.466	106,13 km/h
4	717	<b>HALL Richard Alan</b>	Lotus Seven S1								
		Lauf 1:	10.181	132,38 km/h	08.996	78,16 km/h	14.925	01:57.322	116,13 km/h	02:31.424	99,85 km/h
		Lauf 2:	10.151	134,31 km/h	08.967	78,38 km/h	16.156	01:53.087	147,54 km/h	02:28.361	101,91 km/h
5	713	<b>WEIGELT Thomas</b>	Formel VW222								
		Lauf 1:	09.162	138,12 km/h	09.381	79,67 km/h	15.220	01:55.522	153,85 km/h	02:29.285	101,28 km/h
		Lauf 2:	09.693	132,80 km/h	09.729	* km/h	15.877	01:56.110	147,54 km/h	02:31.409	99,86 km/h
6	704	<b>POHLMANN Jörg</b>	Alfa Romeo								
		Lauf 1:	12.382	110,85 km/h	09.830	63,04 km/h	17.860	01:52.856	137,40 km/h	02:32.928	98,87 km/h
		Lauf 2:	11.948	112,45 km/h	09.790	* km/h	17.937	01:55.471	138,46 km/h	02:35.146	97,46 km/h
7	722	<b>WETTER Hans-Jürgen</b>	Mercedes Benz								
		Lauf 1:	11.779	118,53 km/h	09.882	71,98 km/h	17.230	01:54.491	140,62 km/h	02:33.382	98,58 km/h
		Lauf 2:	11.609	120,69 km/h	09.689	73,48 km/h	17.687	01:56.244	139,53 km/h	02:35.229	97,40 km/h
8	799	<b>WOLF Michael</b>	BMW E30								
		Lauf 1:	10.808	131,20 km/h	09.378	74,40 km/h	16.324	01:59.683	144,00 km/h	02:36.193	96,80 km/h
		Lauf 2:	10.849	134,93 km/h	09.317	74,40 km/h	17.572	02:03.002	144,00 km/h	02:40.740	94,07 km/h
9	702	<b>VON FRAGSTEIN Oliver</b>	Ford Escort								
		Lauf 1:	13.124	104,97 km/h	09.515	67,39 km/h	18.676	02:00.271	113,21 km/h	02:41.586	93,57 km/h
		Lauf 2:	13.073	105,02 km/h	09.463	* km/h	18.678	01:59.887	109,09 km/h	02:41.101	93,85 km/h
10	730	<b>MAY Olaf</b>	Porsche 924 S								
		Lauf 1:	12.799	108,41 km/h	10.216	71,05 km/h	17.876	02:02.012	132,35 km/h	02:42.903	92,82 km/h
		Lauf 2:	12.473	110,00 km/h	10.346	64,91 km/h	18.481	02:00.688	134,33 km/h	02:41.988	93,34 km/h
11	791	<b>MARKERT Jasmin</b>	VW Polo II								
		Lauf 1:	12.172	113,32 km/h	10.421	65,90 km/h	18.452	02:07.231	107,78 km/h	02:48.276	89,85 km/h
		Lauf 2:	12.053	111,50 km/h	10.346	* km/h	19.245	02:07.405	117,65 km/h	02:49.049	89,44 km/h
12	795	<b>EIGL Lukas</b>	Opel Corsa GSI								
		Lauf 1:	12.077	108,52 km/h	09.802	67,79 km/h	17.995	02:12.664	125,00 km/h	02:52.538	87,63 km/h
		Lauf 2:	12.000	110,50 km/h	09.979	68,73 km/h	19.574	02:16.786	126,76 km/h	02:58.339	84,78 km/h
13	718	<b>MEUSER Jutta</b>	Midget MK3								
		Lauf 1:	13.518	94,16 km/h	11.461	58,87 km/h	23.208	02:37.377	106,51 km/h	03:25.564	73,55 km/h
		Lauf 2:	13.992	93,75 km/h	11.294	58,94 km/h	22.407	02:28.902	109,76 km/h	03:16.595	76,91 km/h